


Anti-EHD4 antibody ab153892

[2 References](#) [2 Images](#)

Overview

Product name	Anti-EHD4 antibody
Description	Rabbit polyclonal to EHD4
Host species	Rabbit
Tested applications	Suitable for: WB, IHC-P
Species reactivity	Reacts with: Human Predicted to work with: Mouse, Rat, Cow, Xenopus laevis, Xenopus tropicalis 
Immunogen	Recombinant fragment, corresponding to a region within amino acids 52-315 of Human EHD4 (Uniprot ID: Q9H223).
Positive control	293T, A431, HeLa and HepG2 whole cell lysates; Human BT483 xenograft tissue.
General notes	<p>The Life Science industry has been in the grips of a reproducibility crisis for a number of years. Abcam is leading the way in addressing this with our range of recombinant monoclonal antibodies and knockout edited cell lines for gold-standard validation. Please check that this product meets your needs before purchasing.</p> <p>If you have any questions, special requirements or concerns, please send us an inquiry and/or contact our Support team ahead of purchase. Recommended alternatives for this product can be found below, along with publications, customer reviews and Q&As</p>

Properties

Form	Liquid
Storage instructions	Shipped at 4°C. Upon delivery aliquot. Store at -20°C or -80°C. Avoid freeze / thaw cycle.
Storage buffer	pH: 7.00 Preservative: 0.01% Thimerosal (merthiolate) Constituents: 1.21% Tris, 0.75% Glycine, 20% Glycerol (glycerin, glycerine)
Purity	Immunogen affinity purified
Clonality	Polyclonal
Isotype	IgG

Applications

The Abpromise guarantee

Our **Abpromise guarantee** covers the use of ab153892 in the following tested applications.

The application notes include recommended starting dilutions; optimal dilutions/concentrations should be determined by the end user.

Application	Abreviews	Notes
WB		1/500 - 1/3000. Predicted molecular weight: 61 kDa.
IHC-P		1/100 - 1/1000.

Target

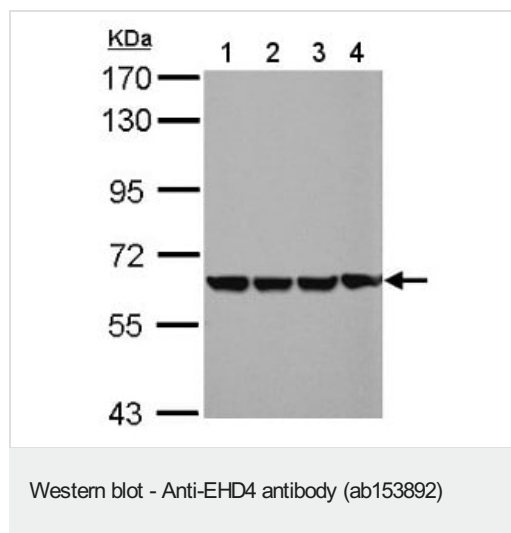
Relevance

EHD4 is involved in the control of trafficking at the early endosome and regulates exit of cargo toward both the recycling compartment and the late endocytic pathway.

Cellular localization

Early endosome membrane; Peripheral membrane protein. Recycling endosome membrane; Peripheral membrane protein.

Images



All lanes : Anti-EHD4 antibody (ab153892) at 1/1000 dilution

Lane 1 : 293T whole cell lysate

Lane 2 : A431 whole cell lysate

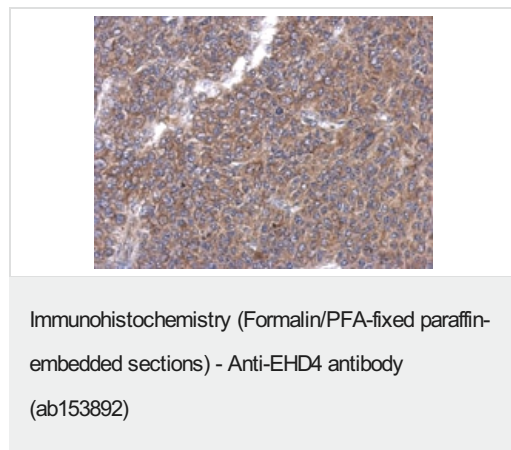
Lane 3 : HeLa whole cell lysate

Lane 4 : HepG2 whole cell lysate

Lysates/proteins at 30 µg per lane.

Predicted band size: 61 kDa

7.5% SDS PAGE



Immunohistochemical analysis of paraffin-embedded Human BT483 xenograft tissue labeling EHD4 with ab153892 at 1/500 dilution.

Please note: All products are "FOR RESEARCH USE ONLY. NOT FOR USE IN DIAGNOSTIC PROCEDURES"

Our Abpromise to you: Quality guaranteed and expert technical support

- Replacement or refund for products not performing as stated on the datasheet
- Valid for 12 months from date of delivery
- Response to your inquiry within 24 hours

- We provide support in Chinese, English, French, German, Japanese and Spanish
- Extensive multi-media technical resources to help you
- We investigate all quality concerns to ensure our products perform to the highest standards

If the product does not perform as described on this datasheet, we will offer a refund or replacement. For full details of the Abpromise, please visit <https://www.abcam.com/abpromise> or contact our technical team.

Terms and conditions

- Guarantee only valid for products bought direct from Abcam or one of our authorized distributors