




## Product datasheet

# Anti-EIF2B1 antibody ab229704

3 Images

### Overview

---

|                            |   |
|----------------------------|---|
| <b>Product name</b>        | Anti-EIF2B1 antibody  |
| <b>Description</b>         | Rabbit polyclonal to EIF2B1   |
| <b>Host species</b>        | Rabbit  |
| <b>Tested applications</b> | <b>Suitable for:</b> IHC-P, WB  |
| <b>Species reactivity</b>  | <b>Reacts with:</b> Mouse, Human<br><b>Predicted to work with:</b> Rat, Cow, Cynomolgus monkey, Orangutan    |
| <b>Immunogen</b>           | Recombinant full length protein corresponding to Human EIF2B1 aa 1 to the C-terminus.<br>Database link: <a href="#">Q14232</a><br> <a href="#">Run BLAST with</a>  <a href="#">Run BLAST with</a>   |
| <b>Positive control</b>    | WB: MCF7, K562, Jurkat and A431 whole cell lysates; Mouse liver and brain tissue lysates. IHC-P: Human prostate cancer and breast cancer tissues.   |
| <b>General notes</b>       | <p>The Life Science industry has been in the grips of a reproducibility crisis for a number of years. Abcam is leading the way in addressing this with our range of recombinant monoclonal antibodies and knockout edited cell lines for gold-standard validation. Please check that this product meets your needs before purchasing.</p> <p>If you have any questions, special requirements or concerns, please send us an inquiry and/or contact our Support team ahead of purchase. Recommended alternatives for this product can be found below, along with publications, customer reviews and Q&amp;As</p> |

### Properties

---

|                             |   |
|-----------------------------|---|
| <b>Form</b>                 | Liquid  |
| <b>Storage instructions</b> | Shipped at 4°C. Store at +4°C short term (1-2 weeks). Upon delivery aliquot. Store at -20°C long term. Avoid freeze / thaw cycle. |
| <b>Storage buffer</b>       | pH: 7.30<br>Preservative: 0.02% Sodium azide<br>Constituents: PBS, 50% Glycerol (glycerin, glycerine)                             |
| <b>Purity</b>               | Immunogen affinity purified   |
| <b>Clonality</b>            | Polyclonal  |
| <b>Isotype</b>              | IgG   |

## Applications

**The Abpromise guarantee** Our **Abpromise guarantee** covers the use of ab229704 in the following tested applications.

The application notes include recommended starting dilutions; optimal dilutions/concentrations should be determined by the end user.

| Application | Abreviews | Notes  |
|-------------|-----------|--|
| IHC-P       |           | 1/20 - 1/200.  |
| WB          |           | 1/1000 - 1/5000. Predicted molecular weight: 34 kDa. |

## Target

### Function

Catalyzes the exchange of eukaryotic initiation factor 2-bound GDP for GTP.

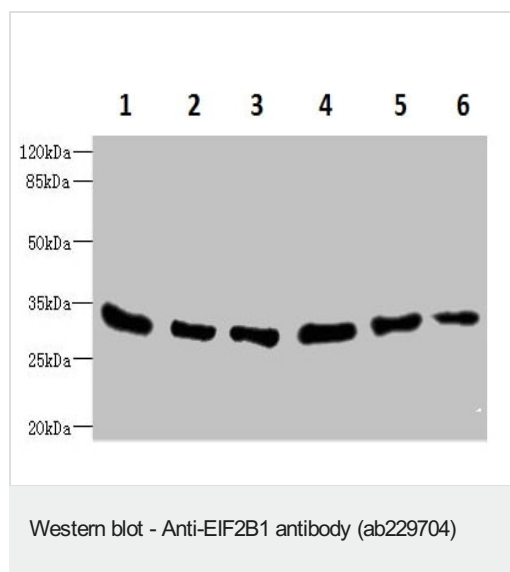
### Involvement in disease

Defects in EIF2B1 are a cause of leukodystrophy with vanishing white matter (VWM) [MIM:603896]. VWM is a leukodystrophy that occurs mainly in children. Neurological signs include progressive cerebellar ataxia, spasticity, inconstant optic atrophy and relatively preserved mental abilities. The disease is chronic-progressive with, in most individuals, additional episodes of rapid deterioration following febrile infections or minor head trauma. While childhood onset is the most common form of the disorder, some severe forms are apparent at birth. A severe, early-onset form seen among the Cree and Chippewyan populations of Quebec and Manitoba is called Cree leukoencephalopathy. Milder forms may not become evident until adolescence or adulthood. Some females with milder forms of the disease who survive to adolescence exhibit ovarian dysfunction. This variant of the disorder is called ovarioleukodystrophy.

### Sequence similarities

Belongs to the eIF-2B alpha/beta/delta subunits family.

## Images



**All lanes** : Anti-EIF2B1 antibody (ab229704) at 1/1000 dilution

**Lane 1** : MCF7 (human breast adenocarcinoma cell line) whole cell lysate

**Lane 2** : K562 (human chronic myelogenous leukemia cell line from bone marrow ) whole cell lysate

**Lane 3** : Mouse liver tissue lysate

**Lane 4** : Mouse brain tissue lysate

**Lane 5** : Jurkat (human T cell leukemia cell line from peripheral blood) whole cell lysate

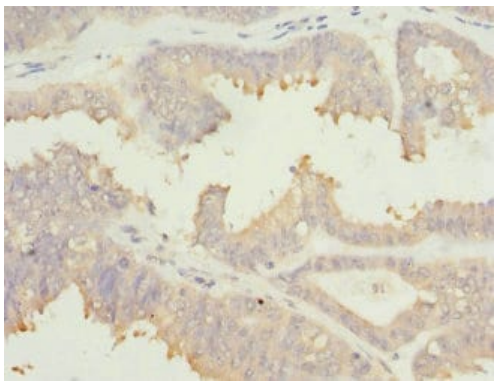
**Lane 6** : A431 (human epidermoid carcinoma cell line) whole cell lysate

### Secondary

**All lanes** : Goat anti-rabbit IgG at 1/10000 dilution

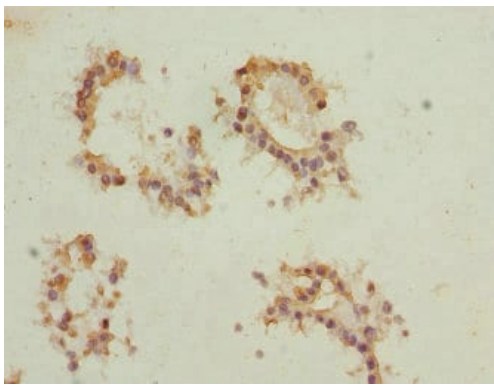
**Predicted band size:** 34 kDa

**Observed band size:** 34 kDa



Paraffin-embedded human prostate cancer tissue stained for EIF2B1 using ab229704 at 1/100 dilution in immunohistochemical analysis.

Immunohistochemistry (Formalin/PFA-fixed paraffin-embedded sections) - Anti-EIF2B1 antibody (ab229704)



Paraffin-embedded human breast cancer tissue stained for EIF2B1 using ab229704 at 1/100 dilution in immunohistochemical analysis.

Immunohistochemistry (Formalin/PFA-fixed paraffin-embedded sections) - Anti-EIF2B1 antibody (ab229704)

**Please note:** All products are "FOR RESEARCH USE ONLY. NOT FOR USE IN DIAGNOSTIC PROCEDURES"

### **Our Abpromise to you: Quality guaranteed and expert technical support**

---

- Replacement or refund for products not performing as stated on the datasheet
- Valid for 12 months from date of delivery
- Response to your inquiry within 24 hours
- We provide support in Chinese, English, French, German, Japanese and Spanish
- Extensive multi-media technical resources to help you
- We investigate all quality concerns to ensure our products perform to the highest standards

If the product does not perform as described on this datasheet, we will offer a refund or replacement. For full details of the Abpromise, please visit <https://www.abcam.com/abpromise> or contact our technical team.

## Terms and conditions

---

- Guarantee only valid for products bought direct from Abcam or one of our authorized distributors