

Anti-EIF2S2/EIF2B antibody ab155649

6 Images

Overview

| | |
|----------------------------|---|
| Product name | Anti-EIF2S2/EIF2B antibody |
| Description | Rabbit polyclonal to EIF2S2/EIF2B |
| Host species | Rabbit |
| Tested applications | Suitable for: WB, IHC-P, ICC/IF |
| Species reactivity | Reacts with: Mouse, Rat, Human |
| Immunogen | Recombinant fragment corresponding to Human EIF2S2/EIF2B aa 119-331. Database link: P20042 |
| Positive control | 293T, A431, H1299 and HeLa cell lysates; mouse liver lysate; rat PC12 and Rat2 cell lysates; HeLa cells; Human SG xenograft tissue. |
| General notes | <p>The Life Science industry has been in the grips of a reproducibility crisis for a number of years. Abcam is leading the way in addressing this with our range of recombinant monoclonal antibodies and knockout edited cell lines for gold-standard validation. Please check that this product meets your needs before purchasing.</p> <p>If you have any questions, special requirements or concerns, please send us an inquiry and/or contact our Support team ahead of purchase. Recommended alternatives for this product can be found below, along with publications, customer reviews and Q&As</p> |

Properties

| | |
|-----------------------------|---|
| Form | Liquid |
| Storage instructions | Shipped at 4°C. Upon delivery aliquot. Store at -20°C or -80°C. Avoid freeze / thaw cycle. |
| Storage buffer | pH: 7.00 Preservative: 0.01% Thimerosal (merthiolate) Constituents: 1.21% Tris, 0.75% Glycine, 10% Glycerol (glycerin, glycerine) |
| Purity | Immunogen affinity purified |
| Clonality | Polyclonal |
| Isotype | IgG |

Applications

The Abpromise guarantee

Our **Abpromise guarantee** covers the use of ab155649 in the following tested applications.

The application notes include recommended starting dilutions; optimal dilutions/concentrations should be determined by the end user.

| Application | Abreviews | Notes |
|-------------|-----------|--|
| WB | | 1/500 - 1/3000. Predicted molecular weight: 38 kDa. |
| IHC-P | | 1/100 - 1/1000. Perform heat mediated antigen retrieval with citrate buffer pH 6 before commencing with IHC staining protocol. Antigen retrieval is also possible using Tris-EDTA buffer (pH 8.0). |
| ICC/IF | | 1/100 - 1/1000. |

Target

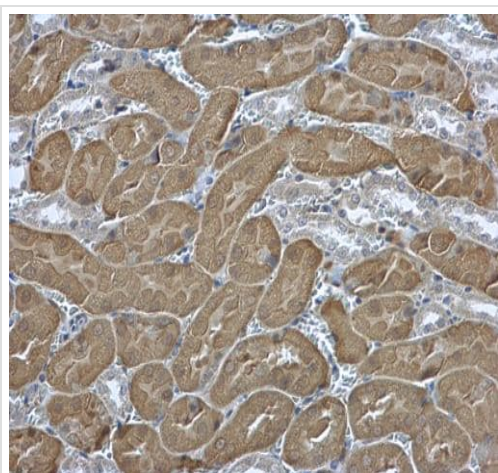
Function

eIF-2 functions in the early steps of protein synthesis by forming a ternary complex with GTP and initiator tRNA. This complex binds to a 40S ribosomal subunit, followed by mRNA binding to form a 43S preinitiation complex. Junction of the 60S ribosomal subunit to form the 80S initiation complex is preceded by hydrolysis of the GTP bound to eIF-2 and release of an eIF-2-GDP binary complex. In order for eIF-2 to recycle and catalyze another round of initiation, the GDP bound to eIF-2 must exchange with GTP by way of a reaction catalyzed by eIF-2B.

Sequence similarities

Belongs to the eIF-2-beta/eIF-5 family.

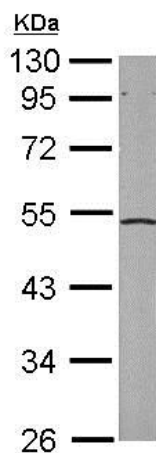
Images



Paraffin-embedded mouse kidney tissue labeling EIF2S2/EIF2B using ab155649 at 1/500 dilution in immunohistochemical analysis.

Antigen Retrieval: Citrate buffer, pH 6.0, 15 minutes.

Immunohistochemistry (Formalin/PFA-fixed paraffin-embedded sections) - Anti-EIF2S2/EIF2B antibody (ab155649)

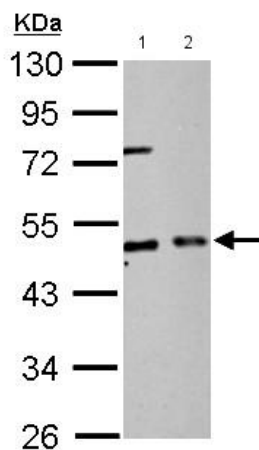


Western blot - Anti-EIF2S2/EIF2B antibody
(ab155649)

Anti-EIF2S2/EIF2B antibody (ab155649) at 1/1000 dilution +
mouse liver lysate at 50 µg

Predicted band size: 38 kDa

10% SDS PAGE



Western blot - Anti-EIF2S2/EIF2B antibody
(ab155649)

All lanes : Anti-EIF2S2/EIF2B antibody (ab155649) at 1/2000
dilution

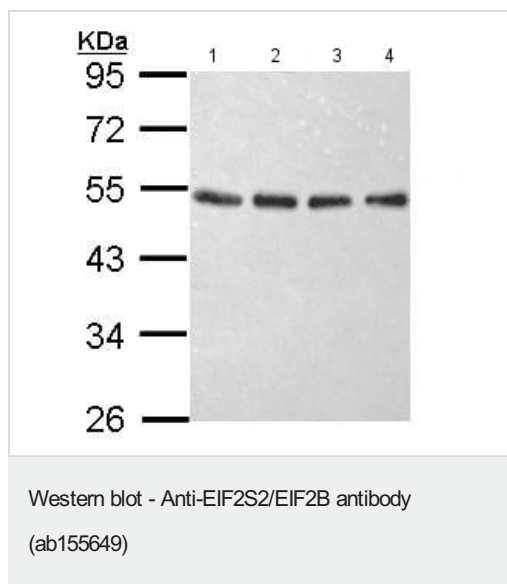
Lane 1 : PC12 whole cell lysate

Lane 2 : Rat2 whole cell lysate

Lysates/proteins at 30 µg per lane.

Predicted band size: 38 kDa

10 % SDS-PAGE



All lanes : Anti-EIF2S2/EIF2B antibody (ab155649) at 1/1000 dilution

Lane 1 : 293T whole cell lysate

Lane 2 : A431 whole cell lysate

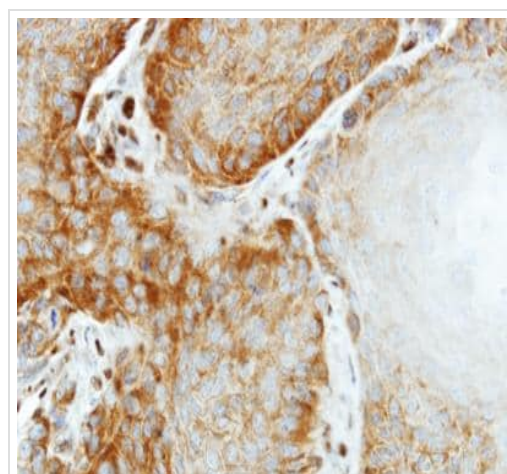
Lane 3 : H1299 whole cell lysate

Lane 4 : HeLa whole cell lysate

Lysates/proteins at 30 µg per lane.

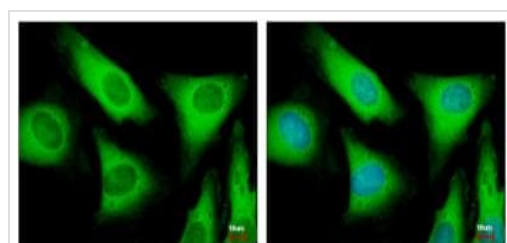
Predicted band size: 38 kDa

10% SDS PAGE



Immunohistochemical analysis of formalin-fixed, paraffin-embedded Human SG xenograft tissue, labeling EIF2S2/EIF2B using ab155649 at a 1/500 dilution.

Immunohistochemistry (Formalin/PFA-fixed paraffin-embedded sections) - Anti-EIF2S2/EIF2B antibody (ab155649)



Immunofluorescence analysis of paraformaldehyde-fixed HeLa cells, labeling EIF2S2/EIF2B using ab155649 at a 1/500 dilution. The image in the right panel was costained with Hoechst 33343.

Immunocytochemistry/ Immunofluorescence - Anti-EIF2S2/EIF2B antibody (ab155649)

Please note: All products are "FOR RESEARCH USE ONLY. NOT FOR USE IN DIAGNOSTIC PROCEDURES"

Our Abpromise to you: Quality guaranteed and expert technical support

- Replacement or refund for products not performing as stated on the datasheet
- Valid for 12 months from date of delivery
- Response to your inquiry within 24 hours

- We provide support in Chinese, English, French, German, Japanese and Spanish
- Extensive multi-media technical resources to help you
- We investigate all quality concerns to ensure our products perform to the highest standards

If the product does not perform as described on this datasheet, we will offer a refund or replacement. For full details of the Abpromise, please visit <https://www.abcam.com/abpromise> or contact our technical team.

Terms and conditions

- Guarantee only valid for products bought direct from Abcam or one of our authorized distributors