


Anti-eIF4E antibody ab72116

[2 Images](#)

Overview

Product name	Anti-eIF4E antibody
Description	Rabbit polyclonal to eIF4E
Host species	Rabbit
Tested applications	Suitable for: IP, WB
Species reactivity	Reacts with: Mouse, Human Predicted to work with: Rabbit, Guinea pig, Cow, Pig, Chimpanzee, Rhesus monkey, Elephant 
Immunogen	Synthetic peptide corresponding to a region between residue 1 and 50 of human eIF4E (NP_001959.1).
Positive control	HeLa whole cell lysate.
General notes	<p>The Life Science industry has been in the grips of a reproducibility crisis for a number of years. Abcam is leading the way in addressing this with our range of recombinant monoclonal antibodies and knockout edited cell lines for gold-standard validation. Please check that this product meets your needs before purchasing.</p> <p>If you have any questions, special requirements or concerns, please send us an inquiry and/or contact our Support team ahead of purchase. Recommended alternatives for this product can be found below, along with publications, customer reviews and Q&As</p>

Properties

Form	Liquid
Storage instructions	Shipped at 4°C. Upon delivery aliquot and store at -20°C. Avoid freeze / thaw cycles.
Storage buffer	pH: 7 Preservative: 0.09% Sodium azide Constituents: 1.815% Tris, 1.764% Sodium citrate, 0.021% PBS
Purity	Immunogen affinity purified
Purification notes	ab72116 was affinity purified using an epitope specific to eIF4E immobilized on solid support.
Clonality	Polyclonal
Isotype	IgG

Applications

The Abpromise guarantee

Our **Abpromise guarantee** covers the use of ab72116 in the following tested applications.

The application notes include recommended starting dilutions; optimal dilutions/concentrations should be determined by the end user.

Application	Abreviews	Notes
IP		Use at 2-5 µg/mg of lysate.
WB		Use at an assay dependent concentration. Predicted molecular weight: 25 kDa.

Target

Function

Its translation stimulation activity is repressed by binding to the complex CYFIP1-FMR1 (By similarity). Recognizes and binds the 7-methylguanosine-containing mRNA cap during an early step in the initiation of protein synthesis and facilitates ribosome binding by inducing the unwinding of the mRNAs secondary structures. Component of the CYFIP1-EIF4E-FMR1 complex which binds to the mRNA cap and mediates translational repression. In the CYFIP1-EIF4E-FMR1 complex this subunit mediates the binding to the mRNA cap.

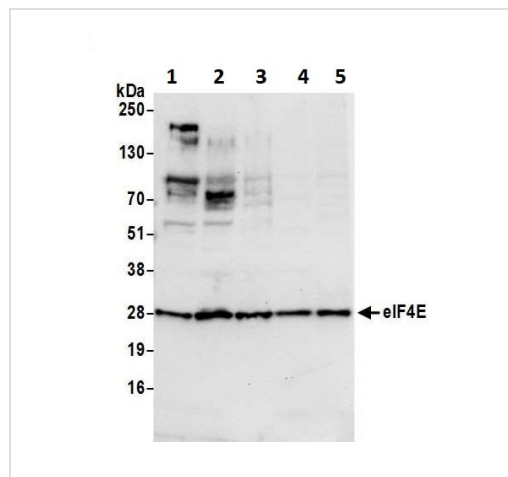
Sequence similarities

Belongs to the eukaryotic initiation factor 4E family.

Post-translational modifications

Phosphorylation increases the ability of the protein to bind to mRNA caps and to form the eIF4F complex.

Images



Western blot - Anti-eIF4E antibody (ab72116)

All lanes : Anti-eIF4E antibody (ab72116) at 0.1 µg/ml

Lane 1 : HeLa cell lysate

Lane 2 : HEK293T cell lysate

Lane 3 : Jurkat cell lysate

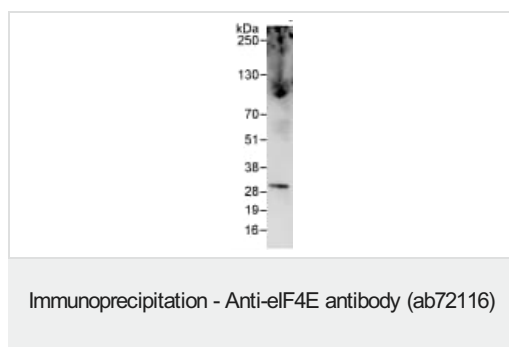
Lane 4 : TCMK-1 cell lysate

Lane 5 : NIH3T3 cell lysate

Predicted band size: 25 kDa

Detection: Chemiluminescence with an exposure time of 10 seconds.

[Previous](#)



Detection of eIF4E by Western Blot of Immunoprecipitate.
anti-eIF4E at 1 µg/ml staining eIF4E in HeLa whole cell lysate
immunoprecipitated using ab72116 at 3 µg/mg lysate (1 mg/IP; 20%
of IP loaded/lane).
Detection: Chemiluminescence with exposure time of 3 seconds.

Please note: All products are "FOR RESEARCH USE ONLY. NOT FOR USE IN DIAGNOSTIC PROCEDURES"

Our Abpromise to you: Quality guaranteed and expert technical support

- Replacement or refund for products not performing as stated on the datasheet
- Valid for 12 months from date of delivery
- Response to your inquiry within 24 hours
- We provide support in Chinese, English, French, German, Japanese and Spanish
- Extensive multi-media technical resources to help you
- We investigate all quality concerns to ensure our products perform to the highest standards

If the product does not perform as described on this datasheet, we will offer a refund or replacement. For full details of the Abpromise, please visit <https://www.abcam.com/abpromise> or contact our technical team.

Terms and conditions

- Guarantee only valid for products bought direct from Abcam or one of our authorized distributors