



Product datasheet

Anti-eIF4E (phospho S209) antibody ab131513

3 Images

Overview

Product name	Anti-eIF4E (phospho S209) antibody
Description	Rabbit polyclonal to eIF4E (phospho S209)
Host species	Rabbit
Tested applications	Suitable for: WB, IHC-P, ICC/IF
Species reactivity	Reacts with: Human
Immunogen	Synthetic peptide corresponding to Human eIF4E (internal sequence) (phospho S209) conjugated to keyhole limpet haemocyanin. NP_001124150.1 Database link: P06730
	 Run BLAST with  Run BLAST with
Positive control	Methanol fixed MCF cells; HT29 cell extracts treated with Anisomycin; Human breast carcinoma tissue
General notes	<p>The Life Science industry has been in the grips of a reproducibility crisis for a number of years. Abcam is leading the way in addressing this with our range of recombinant monoclonal antibodies and knockout edited cell lines for gold-standard validation. Please check that this product meets your needs before purchasing.</p> <p>If you have any questions, special requirements or concerns, please send us an inquiry and/or contact our Support team ahead of purchase. Recommended alternatives for this product can be found below, along with publications, customer reviews and Q&As</p>

Properties

Form	Liquid
Storage instructions	Shipped at 4°C. Upon delivery aliquot and store at -20°C. Avoid repeated freeze / thaw cycles.
Storage buffer	pH: 7.40 Preservative: 0.02% Sodium azide Constituents: 49% PBS, 50% Glycerol (glycerin, glycerine), 0.88% Sodium chloride
	PBS is without Mg ²⁺ and Ca ²⁺
Purity	Immunogen affinity purified
Purification notes	ab131513 was purified using epitope specific phosphopeptide. Non phospho specific antibodies were removed by chromatography using non phosphopeptide.

Clonality	Polyclonal
Isotype	IgG

Applications

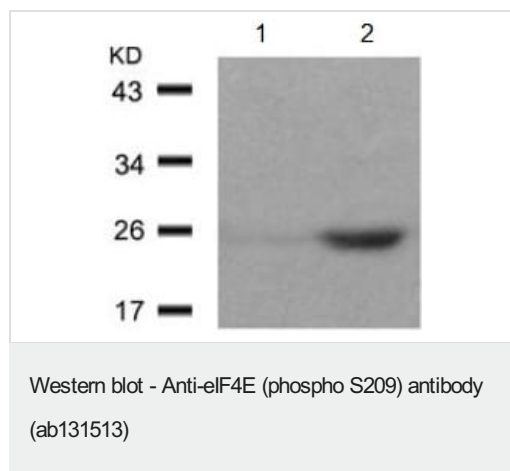
The Abpromise guarantee Our **Abpromise guarantee** covers the use of ab131513 in the following tested applications. The application notes include recommended starting dilutions; optimal dilutions/concentrations should be determined by the end user.

Application	Abreviews	Notes
WB		1/500 - 1/1000. Predicted molecular weight: 25 kDa.
IHC-P		1/50 - 1/100.
ICC/IF		1/100 - 1/200.

Target

Function	Its translation stimulation activity is repressed by binding to the complex CYFIP1-FMR1 (By similarity). Recognizes and binds the 7-methylguanosine-containing mRNA cap during an early step in the initiation of protein synthesis and facilitates ribosome binding by inducing the unwinding of the mRNAs secondary structures. Component of the CYFIP1-EIF4E-FMR1 complex which binds to the mRNA cap and mediates translational repression. In the CYFIP1-EIF4E-FMR1 complex this subunit mediates the binding to the mRNA cap.
Sequence similarities	Belongs to the eukaryotic initiation factor 4E family.
Post-translational modifications	Phosphorylation increases the ability of the protein to bind to mRNA caps and to form the eIF4F complex.

Images



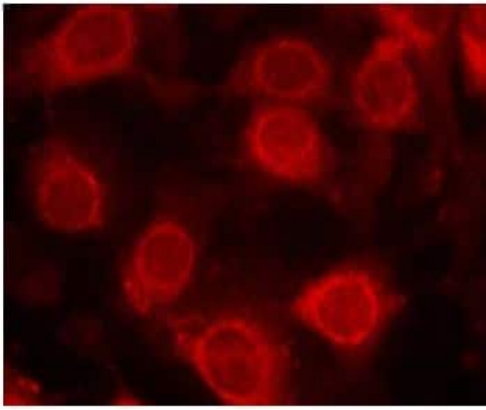
All lanes : Anti-eIF4E (phospho S209) antibody (ab131513) at 1/500 dilution

Lane 1 : HT29 cell extracts, untreated

Lane 2 : HT29 cell extracts Anisomycin treated

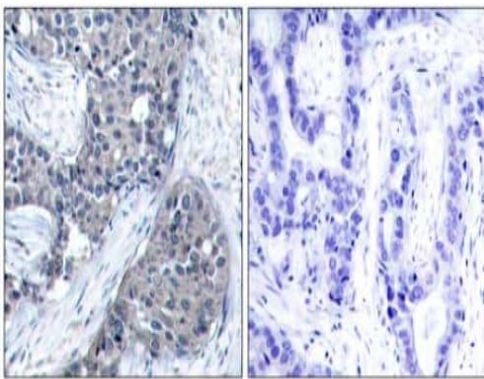
Predicted band size: 25 kDa

For western blotting, membrane should be incubated with diluted antibody in 5% nonfat milk, 1X TBS, 0.1% Tween-20 at 4°C with gentle shaking overnight.



Immunocytochemistry/ Immunofluorescence - Anti-eIF4E (phospho S209) antibody (ab131513)

Immunofluorescence analysis of eIF4E (phospho S209) in methanol fixed MCF cells stained with ab131513 at a dilution of 1/100.



Immunohistochemistry (Formalin/PFA-fixed paraffin-embedded sections) - Anti-eIF4E (phospho S209) antibody (ab131513)

Immunohistochemical analysis of eIF4E (phospho S209) in paraffin embedded Human breast carcinoma tissue stained with ab131513 at a 1/50 dilution (left image), or preincubated with immunizing peptide (right image).

Please note: All products are "FOR RESEARCH USE ONLY. NOT FOR USE IN DIAGNOSTIC PROCEDURES"

Our Abpromise to you: Quality guaranteed and expert technical support

- Replacement or refund for products not performing as stated on the datasheet
- Valid for 12 months from date of delivery
- Response to your inquiry within 24 hours
- We provide support in Chinese, English, French, German, Japanese and Spanish
- Extensive multi-media technical resources to help you
- We investigate all quality concerns to ensure our products perform to the highest standards

If the product does not perform as described on this datasheet, we will offer a refund or replacement. For full details of the Abpromise, please visit <https://www.abcam.com/abpromise> or contact our technical team.

Terms and conditions

- Guarantee only valid for products bought direct from Abcam or one of our authorized distributors