


Product datasheet

Anti-eIF4EBP1 antibody ab2606

★★★★★ [4 Abreviews](#) [32 References](#) [3 Images](#)

Overview

Product name	Anti-eIF4EBP1 antibody
Description	Rabbit polyclonal to eIF4EBP1
Host species	Rabbit
Specificity	This antibody detects alpha (weakly), beta and gamma (strongly) isoforms of eIF-4EBP1.
Tested applications	Suitable for: IHC-P, WB
Species reactivity	Reacts with: Rat, Human Predicted to work with: Rabbit, Chimpanzee, Rhesus monkey, Gorilla, Chinese hamster, Orangutan 
Immunogen	Synthetic peptide (Human) - which represents a portion of human eIF-4EBP1 encoded in part by exons 2 and 3.
General notes	<p>The Life Science industry has been in the grips of a reproducibility crisis for a number of years. Abcam is leading the way in addressing this with our range of recombinant monoclonal antibodies and knockout edited cell lines for gold-standard validation. Please check that this product meets your needs before purchasing.</p> <p>If you have any questions, special requirements or concerns, please send us an inquiry and/or contact our Support team ahead of purchase. Recommended alternatives for this product can be found below, along with publications, customer reviews and Q&As</p>

Properties

Form	Liquid
Storage instructions	Shipped at 4°C. Upon delivery aliquot and store at -20°C. Avoid freeze / thaw cycles.
Storage buffer	pH: 7 Preservative: 0.1% Sodium azide Constituents: 0.021% PBS, 1.764% Sodium citrate, 1.815% Tris
Purification notes	Affinity purified using the immunising peptide immobilized on solid support.
Clonality	Polyclonal
Isotype	IgG

Applications

The Abpromise guarantee

Our **Abpromise guarantee** covers the use of ab2606 in the following tested applications.

The application notes include recommended starting dilutions; optimal dilutions/concentrations should be determined by the end user.

Application	Abreviews	Notes
IHC-P	★★★★☆ (1)	1/5000 - 1/20000. Perform heat mediated antigen retrieval with citrate buffer pH 6 before commencing with IHC staining protocol.
WB	★★★★★ (2)	Use at an assay dependent concentration. Predicted molecular weight: 13 kDa.

Target

Function

Regulates eIF4E activity by preventing its assembly into the eIF4F complex. Mediates the regulation of protein translation by hormones, growth factors and other stimuli that signal through the MAP kinase and mTORC1 pathways.

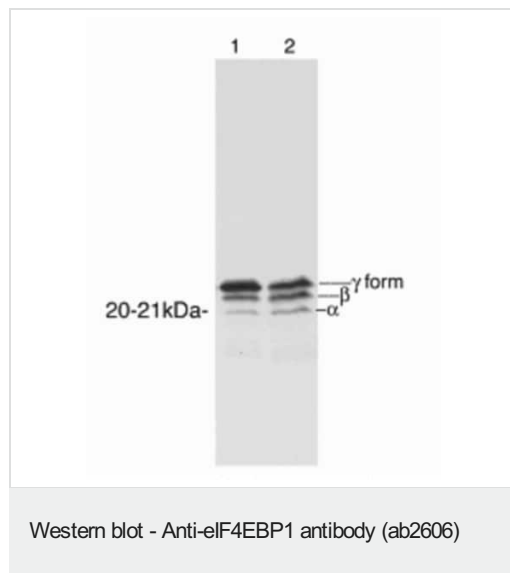
Sequence similarities

Belongs to the eIF4E-binding protein family.

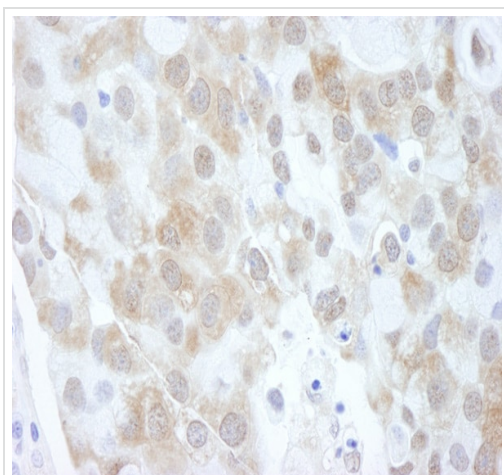
Post-translational modifications

Phosphorylated on serine and threonine residues in response to insulin, EGF and PDGF. Phosphorylation at Thr-37, Thr-46, Ser-65 and Thr-70 is regulated by mTORC1. Phosphorylated upon DNA damage, probably by ATM or ATR.

Images

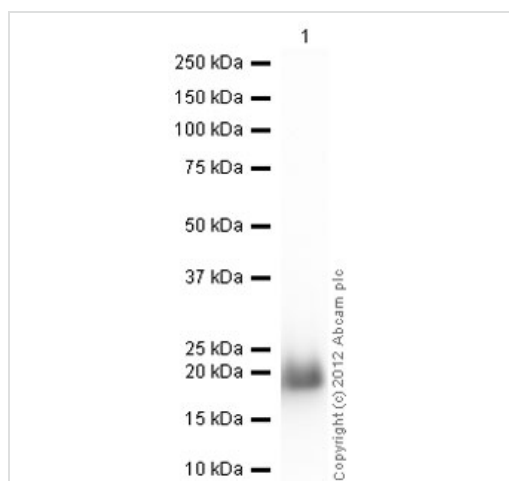


Ab2606 at a 1:4000 dilution staining alpha, beta and gamma isoforms of eIF-4EBP1 in 100µg of RIN-m5F (Rat insulinoma cell line) whole cell lysate after exposure to high (lane 1) and low (lane 2) concentrations of leucine. Ab2606 at a 1:4000 dilution staining alpha, beta and gamma isoforms of eIF-4EBP1 in 100µg of RINm5F cell lysate after exposure to high (lane 1) and low (lane 2) concentrations of leucine.



Immunohistochemistry (Formalin/PFA-fixed paraffin-embedded sections) - Anti-eIF4EBP1 antibody (ab2606)

Immunohistochemistry (Formalin/PFA-fixed paraffin-embedded sections) analysis of human breast carcinoma tissue labelling eIF4EBP1 with ab2606 at 1/20000 (0.05µg/ml). Detection: DAB.



Western blot - Anti-eIF4EBP1 antibody (ab2606)

All lanes : Anti-eIF4EBP1 antibody (ab2606) at 1/1000 dilution

Lane 1 : Recombinant Human eIF4EBP1 protein ([ab60007](#)) at 0.01 µg

Lane 2 : Recombinant Human eIF4EBP1 protein ([ab60007](#)) at 0.001 µg

Secondary

All lanes : Goat Anti-Rabbit IgG H&L (HRP) preadsorbed ([ab97080](#)) at 1/5000 dilution

Developed using the ECL technique.

Performed under reducing conditions.

Predicted band size: 13 kDa

Exposure time: 10 seconds

Our Abpromise to you: Quality guaranteed and expert technical support

- Replacement or refund for products not performing as stated on the datasheet
- Valid for 12 months from date of delivery
- Response to your inquiry within 24 hours

- We provide support in Chinese, English, French, German, Japanese and Spanish
- Extensive multi-media technical resources to help you
- We investigate all quality concerns to ensure our products perform to the highest standards

If the product does not perform as described on this datasheet, we will offer a refund or replacement. For full details of the Abpromise, please visit <https://www.abcam.com/abpromise> or contact our technical team.

Terms and conditions

- Guarantee only valid for products bought direct from Abcam or one of our authorized distributors