

Product datasheet

Anti-eIF4G1 (phospho S1108) antibody [SP351] ab223502

Recombinant RabMAb

5 Images

Overview

Product name	Anti-eIF4G1 (phospho S1108) antibody [SP351]
Description	Rabbit monoclonal [SP351] to eIF4G1 (phospho S1108)
Host species	Rabbit
Tested applications	Suitable for: IHC-P
Species reactivity	Reacts with: Human
Immunogen	Synthetic peptide corresponding to Human eIF4G1 (phospho S1108). Database link: Q04637
Positive control	IHC-P: Human lung carcinoma, ovarian carcinoma, and bladder transitional cell carcinoma tissue.
General notes	<p>This product is FOR RESEARCH USE ONLY. For commercial use, please contact partnerships@abcam.com.</p> <p>The Life Science industry has been in the grips of a reproducibility crisis for a number of years. Abcam is leading the way in addressing this with our range of recombinant monoclonal antibodies and knockout edited cell lines for gold-standard validation. Please check that this product meets your needs before purchasing.</p> <p>If you have any questions, special requirements or concerns, please send us an inquiry and/or contact our Support team ahead of purchase. Recommended alternatives for this product can be found below, along with publications, customer reviews and Q&As</p>

Properties

Form	Liquid
Storage instructions	Shipped at 4°C. Store at +4°C short term (1-2 weeks). Upon delivery aliquot. Store at -20°C long term. Avoid freeze / thaw cycle.
Storage buffer	pH: 7.60 Preservative: 0.1% Sodium azide Constituents: PBS, 1% BSA
Purity	Protein A/G purified
Clonality	Monoclonal

Clone number	SP351
Isotype	IgG

Applications

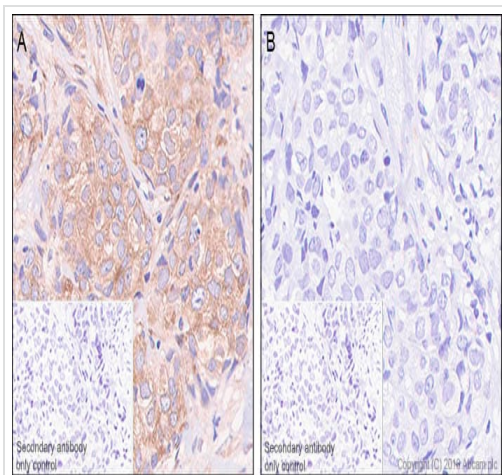
The Abpromise guarantee Our **Abpromise guarantee** covers the use of ab223502 in the following tested applications. The application notes include recommended starting dilutions; optimal dilutions/concentrations should be determined by the end user.

Application	Abreviews	Notes
IHC-P		1/100. Perform heat mediated antigen retrieval with citrate buffer pH 6 before commencing with IHC staining protocol. Primary Antibody Incubation: 10 minutes at room temperature.

Target

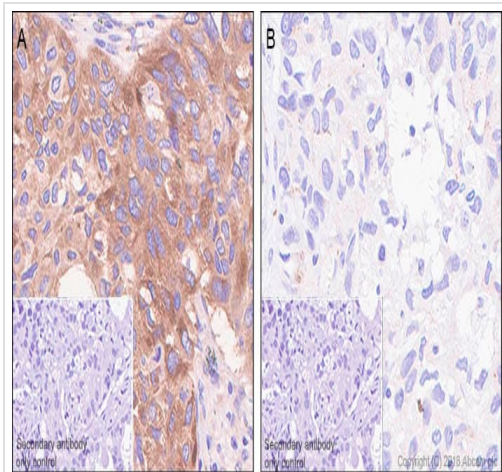
Function	Component of the protein complex eIF4F, which is involved in the recognition of the mRNA cap, ATP-dependent unwinding of 5'-terminal secondary structure and recruitment of mRNA to the ribosome.
Involvement in disease	Defects in EIF4G1 are the cause of Parkinson disease type 18 (PARK18) [MIM:614251]. An autosomal dominant, late-onset form of Parkinson disease. Parkinson disease is a complex neurodegenerative disorder characterized by bradykinesia, resting tremor, muscular rigidity and postural instability, as well as by a clinically significant response to treatment with levodopa. The pathology involves the loss of dopaminergic neurons in the substantia nigra and the presence of Lewy bodies (intraneuronal accumulations of aggregated proteins), in surviving neurons in various areas of the brain.
Sequence similarities	Belongs to the eIF4G family. Contains 1 MI domain. Contains 1 MIF4G domain. Contains 1 W2 domain.
Post-translational modifications	Phosphorylated at multiple sites in vivo. Phosphorylation at Ser-1185 by PRKCA induces binding to MKNK1. Following infection by certain enteroviruses, rhinoviruses and aphthoviruses, EIF4G1 is cleaved by the viral protease 2A, or the leader protease in the case of aphthoviruses. This shuts down the capped cellular mRNA transcription.

Images



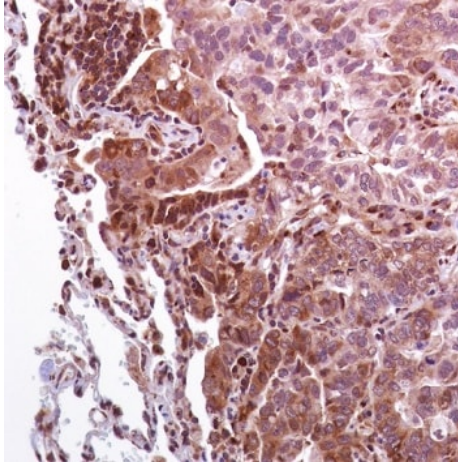
Immunohistochemistry (Formalin/PFA-fixed paraffin-embedded sections) - Anti-eIF4G1 (phospho S1108) antibody [SP351] (ab223502)

Immunohistochemistry (Formalin/PFA-fixed paraffin-embedded sections) analysis of Human ovarian carcinoma tissue sections labeling eIF4G1 with Purified ab223502 at 1/100 dilution (1.20 µg/ml). Heat mediated antigen retrieval was performed Heat mediated antigen retrieval with sodium citrate buffer (pH 6.0, epitope retrieval solution 1) for 10mins. Rabbit specific IHC polymer detection kit HRP/DAB (**ab209101**) was used as the secondary antibody. Negative control: PBS instead of the primary antibody. Hematoxylin was used as a counterstain.



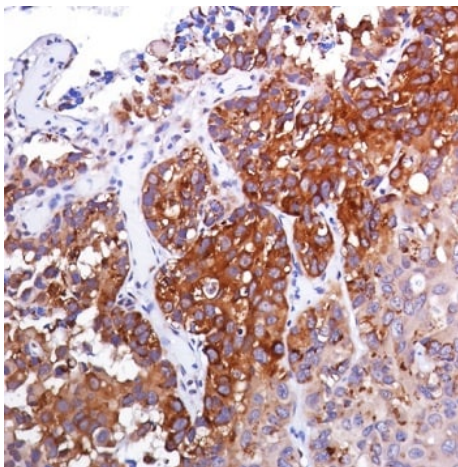
Immunohistochemistry (Formalin/PFA-fixed paraffin-embedded sections) - Anti-eIF4G1 (phospho S1108) antibody [SP351] (ab223502)

Immunohistochemistry (Formalin/PFA-fixed paraffin-embedded sections) analysis of Human lung carcinoma tissue sections labeling eIF4G1 with Purified ab223502 at 1/100 dilution (1.20 µg/ml). Heat mediated antigen retrieval was performed Heat mediated antigen retrieval with sodium citrate buffer (pH 6.0, epitope retrieval solution 1) for 10mins. Rabbit specific IHC polymer detection kit HRP/DAB (**ab209101**) was used as the secondary antibody. Negative control: PBS instead of the primary antibody. Hematoxylin was used as a counterstain.



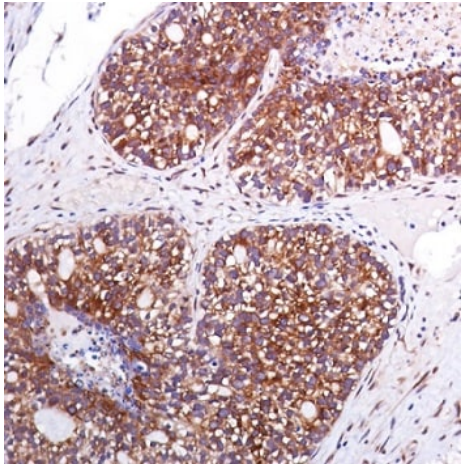
Formalin-fixed, paraffin-embedded human lung adenocarcinoma tissue stained for eIF4G1 (phospho S1108) with ab223502 at 1/100 dilution in immunohistochemical analysis.

Immunohistochemistry (Formalin/PFA-fixed paraffin-embedded sections) - Anti-eIF4G1 (phospho S1108) antibody [SP351] (ab223502)



Formalin-fixed, paraffin-embedded human bladder transitional cell carcinoma tissue stained for eIF4G1 (phospho S1108) with ab223502 at 1/100 dilution in immunohistochemical analysis.

Immunohistochemistry (Formalin/PFA-fixed paraffin-embedded sections) - Anti-eIF4G1 (phospho S1108) antibody [SP351] (ab223502)



Immunohistochemistry (Formalin/PFA-fixed paraffin-embedded sections) - Anti-eIF4G1 (phospho S1108) antibody [SP351] (ab223502)

Formalin-fixed, paraffin-embedded human ovarian adenocarcinoma tissue stained for eIF4G1 (phospho S1108) with ab223502 at 1/100 dilution in immunohistochemical analysis.

Please note: All products are "FOR RESEARCH USE ONLY. NOT FOR USE IN DIAGNOSTIC PROCEDURES"

Our Abpromise to you: Quality guaranteed and expert technical support

- Replacement or refund for products not performing as stated on the datasheet
- Valid for 12 months from date of delivery
- Response to your inquiry within 24 hours
- We provide support in Chinese, English, French, German, Japanese and Spanish
- Extensive multi-media technical resources to help you
- We investigate all quality concerns to ensure our products perform to the highest standards

If the product does not perform as described on this datasheet, we will offer a refund or replacement. For full details of the Abpromise, please visit <https://www.abcam.com/abpromise> or contact our technical team.

Terms and conditions

- Guarantee only valid for products bought direct from Abcam or one of our authorized distributors