

## Product datasheet

# Anti-ELL2 antibody ab219865

[1 References](#) [2 Images](#)

### Overview

---

<b>Product name</b>	Anti-ELL2 antibody
<b>Description</b>	Rabbit polyclonal to ELL2
<b>Host species</b>	Rabbit
<b>Tested applications</b>	<b>Suitable for:</b> WB, ICC/IF
<b>Species reactivity</b>	<b>Reacts with:</b> Human
<b>Immunogen</b>	Recombinant fragment corresponding to Human ELL2 aa 300-500. Database link: <a href="#">O00472</a> <a href="#">Run BLAST with</a> <a href="#">Run BLAST with</a>
<b>Positive control</b>	WB; Human RT-4 and U-251 MG cell extracts. ICC/IF; SiHa human cell line.
<b>General notes</b>	<p>The Life Science industry has been in the grips of a reproducibility crisis for a number of years. Abcam is leading the way in addressing this with our range of recombinant monoclonal antibodies and knockout edited cell lines for gold-standard validation. Please check that this product meets your needs before purchasing.</p> <p>If you have any questions, special requirements or concerns, please send us an inquiry and/or contact our Support team ahead of purchase. Recommended alternatives for this product can be found below, along with publications, customer reviews and Q&amp;As</p>

### Properties

---

<b>Form</b>	Liquid
<b>Storage instructions</b>	Shipped at 4°C. Store at +4°C short term (1-2 weeks). Upon delivery aliquot. Store at -20°C long term. Avoid freeze / thaw cycle.
<b>Storage buffer</b>	pH: 7.20 Preservative: 0.02% Sodium azide Constituents: 40% Glycerol (glycerin, glycerine), 59% PBS
<b>Purity</b>	Immunogen affinity purified
<b>Clonality</b>	Polyclonal
<b>Isotype</b>	IgG

### Applications

---

## The Abpromise guarantee

Our **Abpromise guarantee** covers the use of ab219865 in the following tested applications.

The application notes include recommended starting dilutions; optimal dilutions/concentrations should be determined by the end user.

Application	Abreviews	Notes
WB		Use a concentration of 0.04 - 0.4 µg/ml. Predicted molecular weight: 72 kDa.
ICC/IF		Use a concentration of 0.25 - 2 µg/ml.

## Target

### Function

Elongation factor that can increase the catalytic rate of RNA polymerase II transcription by suppressing transient pausing by the polymerase at multiple sites along the DNA.

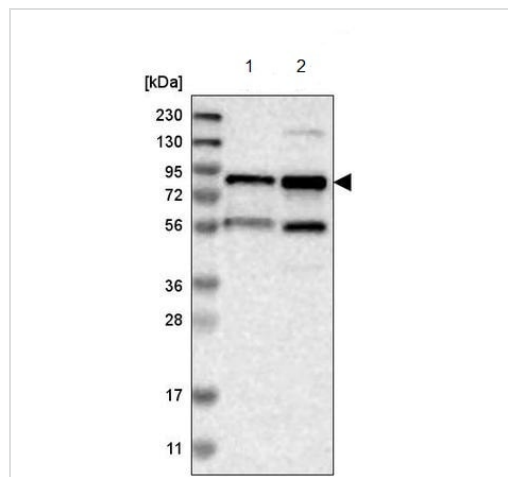
### Sequence similarities

Belongs to the ELL/occludin family.

### Cellular localization

Nucleus.

## Images



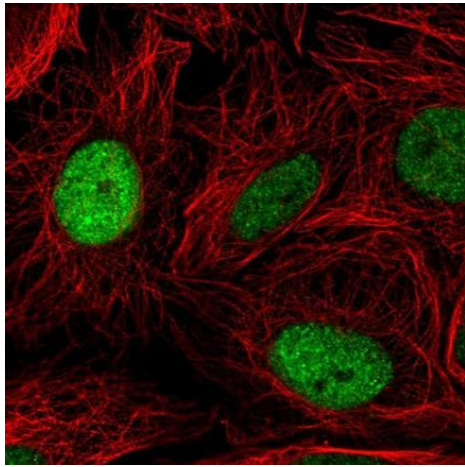
Western blot - Anti-ELL2 antibody (ab219865)

**All lanes :** Anti-ELL2 antibody (ab219865) at 1/100 dilution

**Lane 1 :** Human RT4 cell line extract

**Lane 2 :** Human U251 MG cell line extract

**Predicted band size:** 72 kDa



Immunofluorescent analysis of SiHa cells (PFA-fixed/Triton X-100 permeabilized) labeling ELL2 with ab219865 at 4 µg/ml (green).

Immunocytochemistry/ Immunofluorescence - Anti-ELL2 antibody (ab219865)

**Please note:** All products are "FOR RESEARCH USE ONLY. NOT FOR USE IN DIAGNOSTIC PROCEDURES"

### Our Abpromise to you: Quality guaranteed and expert technical support

---

- Replacement or refund for products not performing as stated on the datasheet
- Valid for 12 months from date of delivery
- Response to your inquiry within 24 hours
- We provide support in Chinese, English, French, German, Japanese and Spanish
- Extensive multi-media technical resources to help you
- We investigate all quality concerns to ensure our products perform to the highest standards

If the product does not perform as described on this datasheet, we will offer a refund or replacement. For full details of the Abpromise, please visit <https://www.abcam.com/abpromise> or contact our technical team.

### Terms and conditions

---

- Guarantee only valid for products bought direct from Abcam or one of our authorized distributors