




## Product datasheet

### Anti-ELMO1 antibody ab2239

★★★★★ [2 Abreviews](#) [12 References](#) [3 Images](#)

#### Overview

Product name	Anti-ELMO1 antibody
Description	Goat polyclonal to ELMO1
Host species	Goat
Specificity	This antibody is expected to recognise both human isoforms.
Tested applications	<b>Suitable for:</b> IHC-P, WB
Species reactivity	<b>Reacts with:</b> Mouse, Rat, Human <b>Predicted to work with:</b> Dog 
Immunogen	Synthetic peptide: PKEPSNYDFVYDCN , corresponding to C terminal amino acids 714-727 of Human ELMO1.  <a href="#">Run BLAST with</a>  <a href="#">Run BLAST with</a>
General notes	<p>The Life Science industry has been in the grips of a reproducibility crisis for a number of years. Abcam is leading the way in addressing this with our range of recombinant monoclonal antibodies and knockout edited cell lines for gold-standard validation. Please check that this product meets your needs before purchasing.</p> <p>If you have any questions, special requirements or concerns, please send us an inquiry and/or contact our Support team ahead of purchase. Recommended alternatives for this product can be found below, along with publications, customer reviews and Q&amp;As</p>

#### Properties

Form	Liquid
Storage instructions	Shipped at 4°C. Upon delivery aliquot and store at -20°C or -80°C. Avoid repeated freeze / thaw cycles.
Storage buffer	pH: 7.30 Preservative: 0.02% Sodium azide Constituents: Tris buffered saline, 0.5% BSA
Purity	Immunogen affinity purified
Purification notes	Purified from goat serum by ammonium sulphate precipitation followed by antigen affinity chromatography using the immunizing peptide.

<b>Clonality</b>	Polyclonal
<b>Isotype</b>	IgG

## Applications

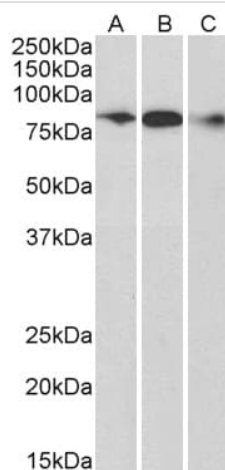
**The Abpromise guarantee** Our **Abpromise guarantee** covers the use of ab2239 in the following tested applications. The application notes include recommended starting dilutions; optimal dilutions/concentrations should be determined by the end user.

Application	Abreviews	Notes
IHC-P		Use a concentration of 10 µg/ml. Perform heat mediated antigen retrieval with citrate buffer pH 6 before commencing with IHC staining protocol.
WB	★★★★★ (1)	Use a concentration of 0.1 - 0.3 µg/ml. A 1 hour primary incubation is recommended for this product. Note the smaller isoform of this protein has a consensus glycosylation site, which may explain the higher than expected band size (50 kDa versus 30 kDa).

## Target

<b>Function</b>	Involved in cytoskeletal rearrangements required for phagocytosis of apoptotic cells and cell motility. Acts in association with DOCK1 and CRK. Was initially proposed to be required in complex with DOCK1 to activate Rac Rho small GTPases. May enhance the guanine nucleotide exchange factor (GEF) activity of DOCK1.
<b>Tissue specificity</b>	Widely expressed, with a higher expression in the spleen and placenta.
<b>Sequence similarities</b>	Contains 1 ELMO domain. Contains 1 PH domain.
<b>Post-translational modifications</b>	Phosphorylated by HCK.
<b>Cellular localization</b>	Cytoplasm. Cell membrane. Translocation to plasma membrane seems to be mediated by DOCK1 and CRK.

## Images



Western blot - Anti-ELMO1 antibody (ab2239)

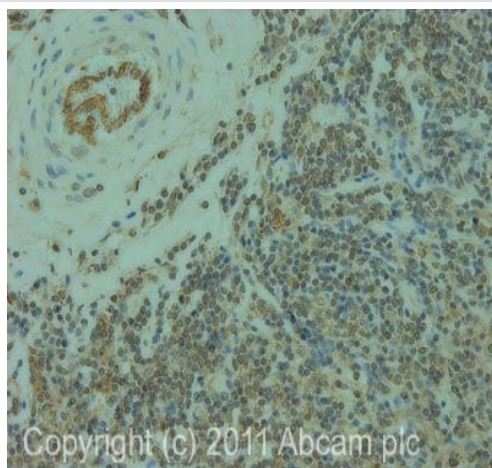
**All lanes :** Anti-ELMO1 antibody (ab2239) at 0.3 µg/ml

**Lane 1 :** Human Frontal Cortex cell lysate (35µg protein in RIPA buffer).

**Lane 2 :** Mouse cell lysate (35µg protein in RIPA buffer).

**Lane 3 :** Rat cell lysate (35µg protein in RIPA buffer).

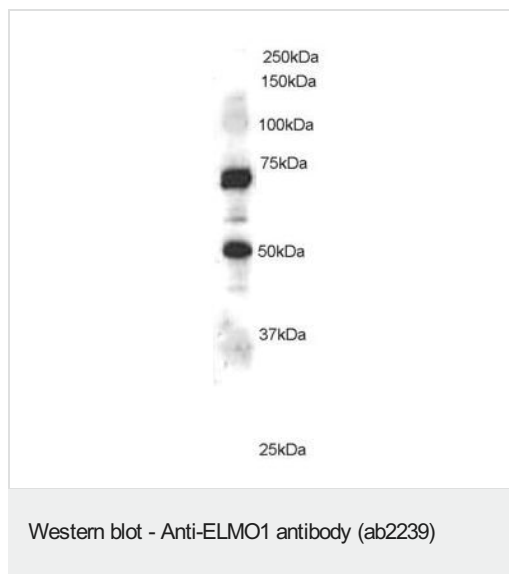
Primary incubation was 1 hour. Detected by chemiluminescence.



Immunohistochemistry (Formalin/PFA-fixed paraffin-embedded sections) - Anti-ELMO1 antibody (ab2239)

IHC image of ab2239 staining in human normal lymphoid formalin fixed paraffin embedded tissue section, performed on a Leica Bond<sup>TM</sup> system using the standard protocol B. The section was pre-treated using heat mediated antigen retrieval with sodium citrate buffer (pH6, epitope retrieval solution 1) for 20 mins. The section was then incubated with ab2239, 10µg/ml, for 15 mins at room temperature and detected using an HRP conjugated compact polymer system. DAB was used as the chromogen. The section was then counterstained with haematoxylin and mounted with DPX.

For other IHC staining systems (automated and non-automated) customers should optimize variable parameters such as antigen retrieval conditions, primary antibody concentration and antibody incubation times.



Ab2239 staining (1µg/ml) of Jurkat lysate (RIPA buffer, 35µg total protein per lane). Primary incubated for 1 hour. Detected by western blot using chemiluminescence. Ab2239 staining (1µg/ml) of Jurkat lysate (RIPA buffer, 35µg total protein per lane). Primary incubated for 1 hour. Detected by western blot using chemiluminescence.

**Please note:** All products are "FOR RESEARCH USE ONLY. NOT FOR USE IN DIAGNOSTIC PROCEDURES"

### Our Abpromise to you: Quality guaranteed and expert technical support

---

- Replacement or refund for products not performing as stated on the datasheet
- Valid for 12 months from date of delivery
- Response to your inquiry within 24 hours
- We provide support in Chinese, English, French, German, Japanese and Spanish
- Extensive multi-media technical resources to help you
- We investigate all quality concerns to ensure our products perform to the highest standards

If the product does not perform as described on this datasheet, we will offer a refund or replacement. For full details of the Abpromise, please visit <https://www.abcam.com/abpromise> or contact our technical team.

### Terms and conditions

---

- Guarantee only valid for products bought direct from Abcam or one of our authorized distributors