


Anti-ELMO1 antibody - C-terminal ab155775

[2 References](#) [3 Images](#)

Overview

Product name	Anti-ELMO1 antibody - C-terminal
Description	Rabbit polyclonal to ELMO1 - C-terminal
Host species	Rabbit
Tested applications	Suitable for: WB, IHC-P, ICC/IF
Species reactivity	Reacts with: Human Predicted to work with: Mouse, Rat, Chicken, Cow, Zebrafish 
Immunogen	Synthetic peptide, corresponding to a region within C terminal amino acids 664-727 of Human ELMO1 (Uniprot ID Q92556).
Positive control	H1299 whole cell lysate; HeLa cells; HepG2 and A431 cell line; Human Stomach tissue.
General notes	<p>The Life Science industry has been in the grips of a reproducibility crisis for a number of years. Abcam is leading the way in addressing this with our range of recombinant monoclonal antibodies and knockout edited cell lines for gold-standard validation. Please check that this product meets your needs before purchasing.</p> <p>If you have any questions, special requirements or concerns, please send us an inquiry and/or contact our Support team ahead of purchase. Recommended alternatives for this product can be found below, along with publications, customer reviews and Q&As</p>

Properties

Form	Liquid
Storage instructions	Shipped at 4°C. Upon delivery aliquot. Store at -20°C or -80°C. Avoid freeze / thaw cycle.
Storage buffer	pH: 7.00 Preservative: 0.01% Thimerosal (merthiolate) Constituents: 89.99% PBS, 10% Glycerol (glycerin, glycerine)
Purity	Immunogen affinity purified
Clonality	Polyclonal
Isotype	IgG

Applications

The Abpromise guarantee

Our **Abpromise guarantee** covers the use of ab155775 in the following tested applications.

The application notes include recommended starting dilutions; optimal dilutions/concentrations should be determined by the end user.

Application	Abreviews	Notes
WB		1/500 - 1/3000. Predicted molecular weight: 84 kDa.
IHC-P		1/100 - 1/1000. Perform heat mediated antigen retrieval with citrate buffer pH 6 before commencing with IHC staining protocol.
ICC/IF		1/100 - 1/1000.

Target

Function

Involved in cytoskeletal rearrangements required for phagocytosis of apoptotic cells and cell motility. Acts in association with DOCK1 and CRK. Was initially proposed to be required in complex with DOCK1 to activate Rac Rho small GTPases. May enhance the guanine nucleotide exchange factor (GEF) activity of DOCK1.

Tissue specificity

Widely expressed, with a higher expression in the spleen and placenta.

Sequence similarities

Contains 1 ELMO domain.
Contains 1 PH domain.

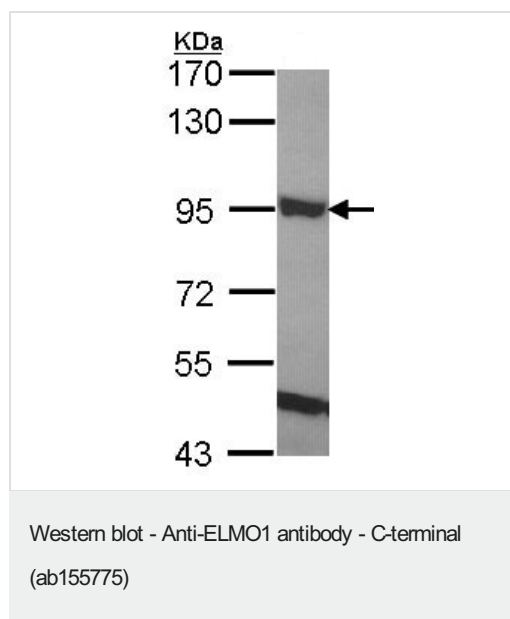
Post-translational modifications

Phosphorylated by HCK.

Cellular localization

Cytoplasm. Cell membrane. Translocation to plasma membrane seems to be mediated by DOCK1 and CRK.

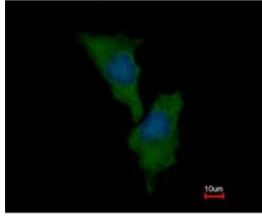
Images



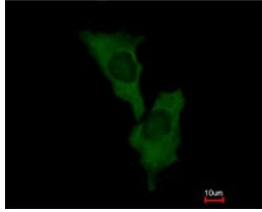
Anti-ELMO1 antibody - C-terminal (ab155775) at 1/1000 dilution + H1299 whole cell lysate at 30 µg

Predicted band size: 84 kDa

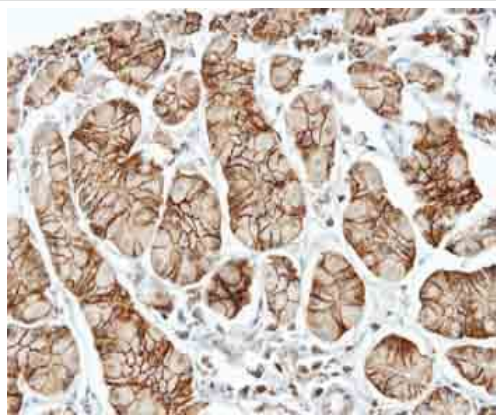
12% SDS PAGE



Immunofluorescence analysis of methanol-fixed HeLa, labeling ELMO1 with ab155775 at 1/500 dilution. Blue: Hoechst 33342 staining.



Immunocytochemistry/ Immunofluorescence - Anti-ELMO1 antibody - C-terminal (ab155775)



Immunohistochemical analysis of paraffin-embedded Human Stomach tissue, labeling ELMO1 with ab155775 at 1/100 dilution.

Immunohistochemistry (Formalin/PFA-fixed paraffin-embedded sections) - Anti-ELMO1 antibody - C-terminal (ab155775)

Please note: All products are "FOR RESEARCH USE ONLY. NOT FOR USE IN DIAGNOSTIC PROCEDURES"

Our Abpromise to you: Quality guaranteed and expert technical support

- Replacement or refund for products not performing as stated on the datasheet
- Valid for 12 months from date of delivery
- Response to your inquiry within 24 hours
- We provide support in Chinese, English, French, German, Japanese and Spanish
- Extensive multi-media technical resources to help you
- We investigate all quality concerns to ensure our products perform to the highest standards

If the product does not perform as described on this datasheet, we will offer a refund or replacement. For full details of the Abpromise,

please visit <https://www.abcam.com/abpromise> or contact our technical team.

Terms and conditions

- Guarantee only valid for products bought direct from Abcam or one of our authorized distributors