


Product datasheet

Anti-Elongation factor 1-gamma antibody ab72368

★★★★★ [1 Abreviews](#) [5 References](#) [5 Images](#)

Overview

Product name	Anti-Elongation factor 1-gamma antibody
Description	Rabbit polyclonal to Elongation factor 1-gamma
Host species	Rabbit
Tested applications	Suitable for: IHC-P, WB, IP, ICC/IF
Species reactivity	Reacts with: Mouse, Human Predicted to work with: Chimpanzee, Rhesus monkey, Gorilla 
Immunogen	Synthetic peptide corresponding to Human Elongation factor 1-gamma aa 200-300. Database link: P26641
Positive control	WB: Whole cell lysate from Hela, 293T, NIH3T3. IHC-P: Human colon carcinoma and testis tissue. ICC/IF: Hela whole cell lysate.
General notes	<p>The Life Science industry has been in the grips of a reproducibility crisis for a number of years. Abcam is leading the way in addressing this with our range of recombinant monoclonal antibodies and knockout edited cell lines for gold-standard validation. Please check that this product meets your needs before purchasing.</p> <p>If you have any questions, special requirements or concerns, please send us an inquiry and/or contact our Support team ahead of purchase. Recommended alternatives for this product can be found below, along with publications, customer reviews and Q&As</p>

Properties

Form	Liquid
Storage instructions	Shipped at 4°C. Upon delivery aliquot and store at -20°C. Avoid freeze / thaw cycles.
Storage buffer	pH: 6.8 Preservative: 0.09% Sodium azide Constituents: 0.1% BSA, Tris buffered saline
Purity	Immunogen affinity purified
Clonality	Polyclonal
Isotype	IgG

Applications

The Abpromise guarantee

Our **Abpromise guarantee** covers the use of ab72368 in the following tested applications.

The application notes include recommended starting dilutions; optimal dilutions/concentrations should be determined by the end user.

Application	Abreviews	Notes
IHC-P		Use a concentration of 1 µg/ml. Perform heat mediated antigen retrieval with citrate buffer pH 6 before commencing with IHC staining protocol.
WB	★★★★★ (1)	1/2000 - 1/10000. Detects a band of approximately 50 kDa (predicted molecular weight: 50 kDa).
IP		Use at 2-5 µg/mg of lysate.
ICC/IF		Use a concentration of 1 µg/ml.

Target

Function

Probably plays a role in anchoring the complex to other cellular components.

Tissue specificity

Highly expressed in pancreatic tumor tissue and to a lesser extent in normal kidney, intestine, pancreas, stomach, lung, brain, spleen and liver.

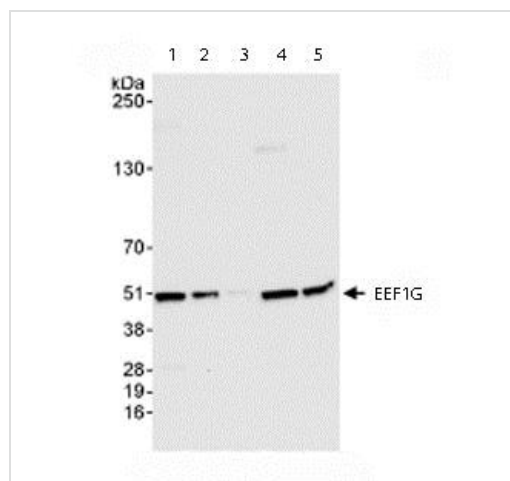
Sequence similarities

Contains 1 EF-1-gamma C-terminal domain.

Contains 1 GST C-terminal domain.

Contains 1 GST N-terminal domain.

Images



Western blot - Anti-Elongation factor 1-gamma antibody (ab72368)

All lanes : Anti-Elongation factor 1-gamma antibody (ab72368) at 0.04 µg/ml

Lane 1 : Whole cell lysate from HeLa cells at 50 µg

Lane 2 : Whole cell lysate from HeLa cells at 15 µg

Lane 3 : Whole cell lysate from HeLa cells at 5 µg

Lane 4 : Whole cell lysate from 293T cells at 50 µg

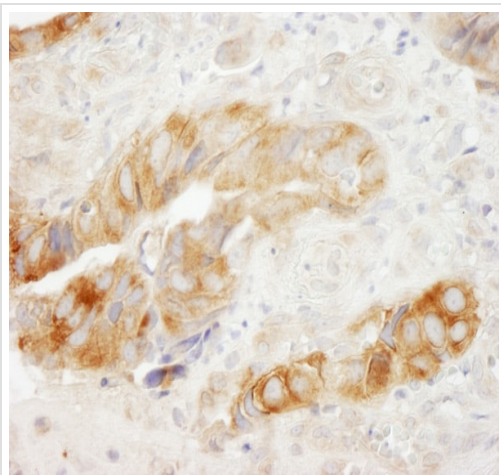
Lane 5 : Whole cell lysate from NIH3T3 cells at 50 µg

Developed using the ECL technique.

Predicted band size: 50 kDa

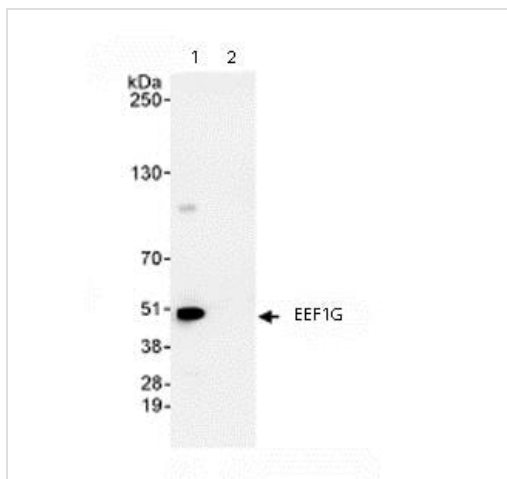
Observed band size: 50 kDa

Exposure time: 30 seconds



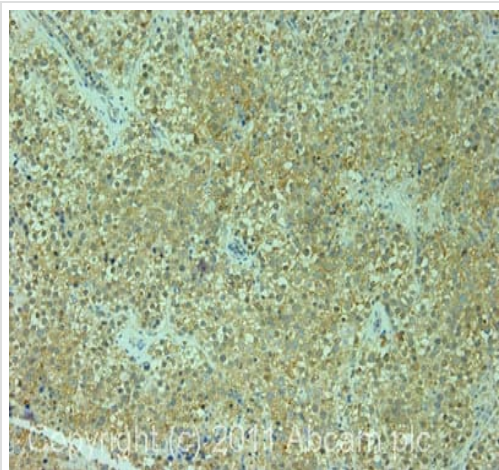
Immunohistochemistry (Formalin/PFA-fixed paraffin-embedded sections) - Anti-Elongation factor 1-gamma antibody (ab72368)

Immunohistochemistry (Formalin/PFA-fixed paraffin-embedded sections) analysis of human colon carcinoma tissue labelling Elongation factor 1-gamma with ab72368 at 1/200 (1 μ g/ml).
Detection: DAB.



Immunoprecipitation - Anti-Elongation factor 1-gamma antibody (ab72368)

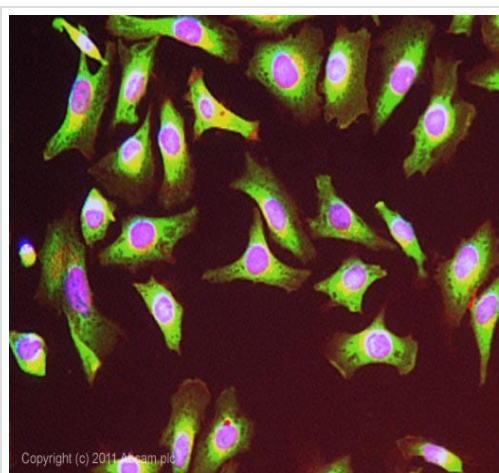
Immunoprecipitation/ Western Blot of Elongation factor 1-gamma.
Lane 1: ab72368 at 3 μ g/mg whole cell lysate. Lane 2: Control IgG.
ab72368 at 1 μ g/ml for WB. Whole cell lysate from HeLa cells at 1mg for IP, 20% of IP loaded. Chemiluminescence with an exposure time of 30 seconds.



Immunohistochemistry (Formalin/PFA-fixed paraffin-embedded sections) - Anti-Elongation factor 1-gamma antibody (ab72368)

IHC image of ab72368 staining in human normal testis formalin fixed paraffin embedded tissue section, performed on a Leica Bond™ system using the standard protocol F. The section was pre-treated using heat mediated antigen retrieval with sodium citrate buffer (pH6, epitope retrieval solution 1) for 20 mins. The section was then incubated with ab72368, 1 µg/ml, for 15 mins at room temperature and detected using an HRP conjugated compact polymer system. DAB was used as the chromogen. The section was then counterstained with haematoxylin and mounted with DPX.

For other IHC staining systems (automated and non-automated) customers should optimize variable parameters such as antigen retrieval conditions, primary antibody concentration and antibody incubation times.



Immunocytochemistry/ Immunofluorescence - Anti-Elongation factor 1-gamma antibody (ab72368)

ICC image of ab72368 stained HeLa cells. The cells were 4% formaldehyde fixed (10 min) and then incubated in 1% BSA / 10% normal goat serum / 0.3M glycine in 0.1% PBS-Tween for 1h to permeabilise the cells and block non-specific protein-protein interactions. The cells were then incubated with the antibody (ab72368, 1 µg/mL) overnight at +4°C. The secondary antibody (green) was **ab96899**, DyLight® 488 goat anti-rabbit IgG (H+L) used at a 1/250 dilution for 1h. Alexa Fluor® 594 WGA was used to label plasma membranes (red) at a 1/200 dilution for 1h. DAPI was used to stain the cell nuclei (blue) at a concentration of 1.43 µM.

Please note: All products are "FOR RESEARCH USE ONLY. NOT FOR USE IN DIAGNOSTIC PROCEDURES"

Our Abpromise to you: Quality guaranteed and expert technical support

- Replacement or refund for products not performing as stated on the datasheet
- Valid for 12 months from date of delivery
- Response to your inquiry within 24 hours
- We provide support in Chinese, English, French, German, Japanese and Spanish
- Extensive multi-media technical resources to help you
- We investigate all quality concerns to ensure our products perform to the highest standards

If the product does not perform as described on this datasheet, we will offer a refund or replacement. For full details of the Abpromise, please visit <https://www.abcam.com/abpromise> or contact our technical team.

Terms and conditions

- Guarantee only valid for products bought direct from Abcam or one of our authorized distributors