

Product datasheet

Anti-EMILIN1 antibody [EPR14678] - N-terminal ab185953

Recombinant RabMAb

[1 References](#) [3 Images](#)

Overview

Product name	Anti-EMILIN1 antibody [EPR14678] - N-terminal
Description	Rabbit monoclonal [EPR14678] to EMILIN1 - N-terminal
Host species	Rabbit
Tested applications	Suitable for: IP, WB
Species reactivity	Reacts with: Human
Immunogen	Synthetic peptide. This information is proprietary to Abcam and/or its suppliers.
Positive control	Human uterus, fetal kidney and colon cancer tissue lysates
General notes	<p>This product is a recombinant monoclonal antibody, which offers several advantages including:</p> <ul style="list-style-type: none"> - High batch-to-batch consistency and reproducibility - Improved sensitivity and specificity - Long-term security of supply - Animal-free production <p>For more information see here.</p> <p>Our RabMAb[®] technology is a patented hybridoma-based technology for making rabbit monoclonal antibodies. For details on our patents, please refer to RabMAb[®] patents.</p>

Properties

Form	Liquid
Storage instructions	Shipped at 4°C. Store at +4°C short term (1-2 weeks). Upon delivery aliquot. Store at -20°C long term. Avoid freeze / thaw cycle.
Storage buffer	<p>pH: 7.2</p> <p>Preservative: 0.01% Sodium azide</p> <p>Constituents: 59% PBS, 40% Glycerol (glycerin, glycerine), 0.05% BSA</p>
Purity	Protein A purified
Clonality	Monoclonal
Clone number	EPR14678
Isotype	IgG

Applications

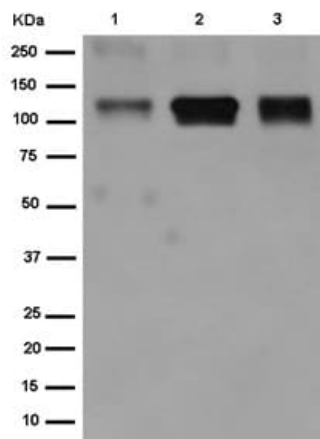
The Abpromise guarantee Our **Abpromise guarantee** covers the use of ab185953 in the following tested applications. The application notes include recommended starting dilutions; optimal dilutions/concentrations should be determined by the end user.

Application	Abreviews	Notes
IP		1/30 - 1/50.
WB		1/1000 - 1/10000. Detects a band of approximately 120 kDa (predicted molecular weight: 107 kDa).

Target

Function	May be responsible for anchoring smooth muscle cells to elastic fibers, and may be involved not only in the formation of the elastic fiber, but also in the processes that regulate vessel assembly. Has cell adhesive capacity.
Tissue specificity	Distributed in tissues where resilience and elastic recoil are prominent. Highest levels in the adult small intestine, aorta, lung, uterus, and appendix and in the fetal spleen, kidney, lung, and heart; intermediate expression was detected in adult liver, ovary, colon, stomach, lymph node and spleen; adult heart, bladder, prostate, adrenal gland, mammary gland, placenta and kidney showed low expression whereas a series of other adult tissues, including skeletal muscle and different regions of adult brain show no expression.
Sequence similarities	Contains 1 C1q domain. Contains 1 collagen-like domain. Contains 1 EMI domain.
Cellular localization	Secreted > extracellular space > extracellular matrix. Found mainly at the interface between amorphous elastin and microfibrils.

Images



Western blot - Anti-EMILIN1 antibody [EPR14678] - N-terminal (ab185953)

All lanes : Anti-EMILIN1 antibody [EPR14678] - N-terminal (ab185953) at 1/50000 dilution

Lane 1 : Human uterus tissue lysate

Lane 2 : Human fetal kidney tissue lysate

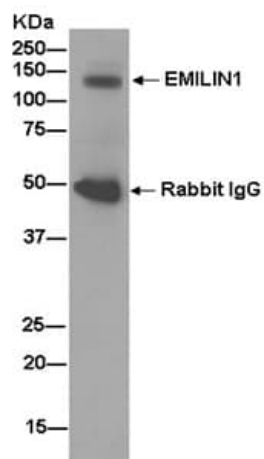
Lane 3 : Human colon cancer tissue lysate

Lysates/proteins at 20 µg per lane.

Secondary

All lanes : Anti-Rabbit IgG (HRP), specific to the non-reduced form of IgG at 1/1000 dilution

Predicted band size: 107 kDa



Immunoprecipitation - Anti-EMILIN1 antibody [EPR14678] - N-terminal (ab185953)

Western blot analysis of immunoprecipitation pellet from Human fetal kidney tissue lysate labeling EMILIN1 with ab185953 at a 1/50 dilution. Secondary ab: Goat Anti-Rabbit IgG, (H+L), Peroxidase conjugated, at a 1/1000 dilution.

Why choose a recombinant antibody?



Research with confidence
Consistent and reproducible results



Long-term and scalable supply
Recombinant technology



Success from the first experiment
Confirmed specificity



Ethical standards compliant
Animal-free production

Anti-EMILIN1 antibody [EPR14678] - N-terminal
(ab185953)

Please note: All products are "FOR RESEARCH USE ONLY. NOT FOR USE IN DIAGNOSTIC PROCEDURES"

Our Abpromise to you: Quality guaranteed and expert technical support

- Replacement or refund for products not performing as stated on the datasheet
- Valid for 12 months from date of delivery
- Response to your inquiry within 24 hours
- We provide support in Chinese, English, French, German, Japanese and Spanish
- Extensive multi-media technical resources to help you
- We investigate all quality concerns to ensure our products perform to the highest standards

If the product does not perform as described on this datasheet, we will offer a refund or replacement. For full details of the Abpromise, please visit <https://www.abcam.com/abpromise> or contact our technical team.

Terms and conditions

- Guarantee only valid for products bought direct from Abcam or one of our authorized distributors