


Product datasheet

Anti-EML1 antibody - C-terminal ab153703

★★★★☆ [1 Abreviews](#) [1 References](#) [2 Images](#)

Overview

Product name	Anti-EML1 antibody - C-terminal
Description	Rabbit polyclonal to EML1 - C-terminal
Host species	Rabbit
Tested applications	Suitable for: WB, ICC/IF
Species reactivity	Reacts with: Human Predicted to work with: Mouse, Rat 
Immunogen	Recombinant fragment, corresponding to a region within C terminal amino acids 585-815 of Human EML1 (UniProt: O00423).
Positive control	HepG2 whole cell lysate; A549 cells.
General notes	<p>The Life Science industry has been in the grips of a reproducibility crisis for a number of years. Abcam is leading the way in addressing this with our range of recombinant monoclonal antibodies and knockout edited cell lines for gold-standard validation. Please check that this product meets your needs before purchasing.</p> <p>If you have any questions, special requirements or concerns, please send us an inquiry and/or contact our Support team ahead of purchase. Recommended alternatives for this product can be found below, along with publications, customer reviews and Q&As</p>

Properties

Form	Liquid
Storage instructions	Shipped at 4°C. Upon delivery aliquot. Store at -20°C or -80°C. Avoid freeze / thaw cycle.
Storage buffer	pH: 7.00 Preservative: 0.01% Thimerosal (merthiolate) Constituents: 1.21% Tris, 0.75% Glycine, 20% Glycerol (glycerin, glycerine)
Purity	Immunogen affinity purified
Clonality	Polyclonal
Isotype	IgG

Applications

The Abpromise guarantee

Our **Abpromise guarantee** covers the use of ab153703 in the following tested applications.

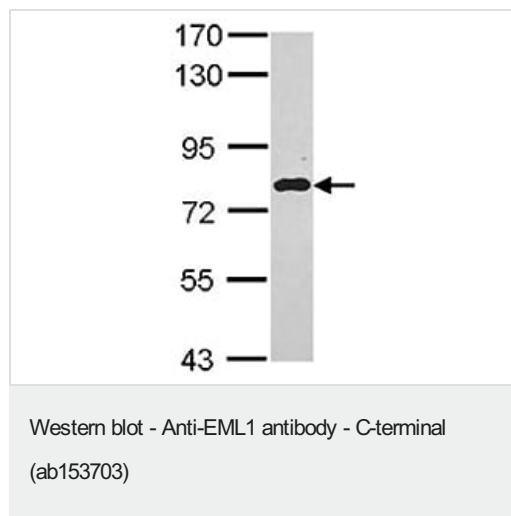
The application notes include recommended starting dilutions; optimal dilutions/concentrations should be determined by the end user.

Application	Abreviews	Notes
WB	★★★★★ (1)	1/500 - 1/3000.
ICC/IF		1/100 - 1/1000.

Target

Function	May modify the assembly dynamics of microtubules, such that microtubules are slightly longer, but more dynamic.
Tissue specificity	Ubiquitous; expressed in most tissues with the exception of thymus and peripheral blood lymphocytes.
Sequence similarities	Belongs to the WD repeat EMAP family. Contains 10 WD repeats.
Cellular localization	Cytoplasm > cytoskeleton.

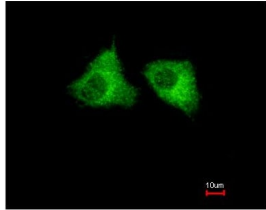
Images



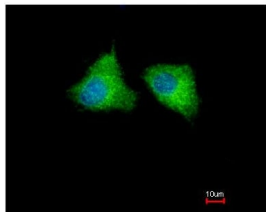
Anti-EML1 antibody - C-terminal (ab153703) at 1/1000 dilution + HepG2 cell lysate at 30 µg

Performed under reducing conditions.

7.5% SDS PAGE



Immunofluorescent analysis of methanol-fixed A549 cells labeling EML1 with ab153703 at 1/500 dilution. Lower image shows cells co-stained with Hoechst 33342.



Immunocytochemistry/ Immunofluorescence - Anti-EML1 antibody - C-terminal (ab153703)

Please note: All products are "FOR RESEARCH USE ONLY. NOT FOR USE IN DIAGNOSTIC PROCEDURES"

Our Abpromise to you: Quality guaranteed and expert technical support

- Replacement or refund for products not performing as stated on the datasheet
- Valid for 12 months from date of delivery
- Response to your inquiry within 24 hours
- We provide support in Chinese, English, French, German, Japanese and Spanish
- Extensive multi-media technical resources to help you
- We investigate all quality concerns to ensure our products perform to the highest standards

If the product does not perform as described on this datasheet, we will offer a refund or replacement. For full details of the Abpromise, please visit <https://www.abcam.com/abpromise> or contact our technical team.

Terms and conditions

- Guarantee only valid for products bought direct from Abcam or one of our authorized distributors