


## Product datasheet

### Anti-EML4 antibody ab85834

KO VALIDATED

4 Images

#### Overview

Product name	Anti-EML4 antibody
Description	Rabbit polyclonal to EML4
Host species	Rabbit
Tested applications	<b>Suitable for:</b> WB, IP, IHC-P
Species reactivity	<b>Reacts with:</b> Human <b>Predicted to work with:</b> Gorilla 
Immunogen	Synthetic peptide, corresponding to a region within amino acids 931-981 of Human EML4 (NP_061936.2)
Positive control	HepG2 and HeLa whole cell lysate
General notes	<p>The Life Science industry has been in the grips of a reproducibility crisis for a number of years. Abcam is leading the way in addressing this with our range of recombinant monoclonal antibodies and knockout edited cell lines for gold-standard validation. Please check that this product meets your needs before purchasing.</p> <p>If you have any questions, special requirements or concerns, please send us an inquiry and/or contact our Support team ahead of purchase. Recommended alternatives for this product can be found below, along with publications, customer reviews and Q&amp;As</p>

#### Properties

Form	Liquid
Storage instructions	Shipped at 4°C. Upon delivery aliquot and store at -20°C. Avoid freeze / thaw cycles.
Storage buffer	pH: 7 Preservative: 0.09% Sodium azide Constituent: Tris citrate/phosphate
Purity	Immunogen affinity purified
Clonality	Polyclonal
Isotype	IgG

## Applications

### The Abpromise guarantee

Our **Abpromise guarantee** covers the use of ab85834 in the following tested applications.

The application notes include recommended starting dilutions; optimal dilutions/concentrations should be determined by the end user.

Application	Abreviews	Notes
WB		1/2000 - 1/10000. Predicted molecular weight: 109 kDa.
IP		Use at 2-5 µg/mg of lysate.
IHC-P		1/500 - 1/2000. Perform heat mediated antigen retrieval with citrate buffer pH 6 before commencing with IHC staining protocol.

## Target

### Function

May modify the assembly dynamics of microtubules, such that microtubules are slightly longer, but more dynamic.

### Sequence similarities

Belongs to the WD repeat EMAP family.  
Contains 9 WD repeats.

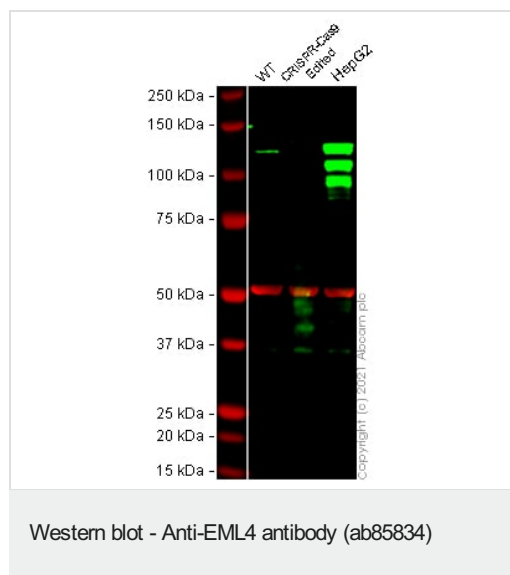
### Developmental stage

Strongly overexpressed during mitosis.

### Cellular localization

Cytoplasm > cytoskeleton.

## Images



**All lanes :** Anti-EML4 antibody (ab85834) at 1/2000 dilution

**Lane 1 :** Wild-type HeLa cell lysate

**Lane 2 :** EML4 CRISPR-Cas9 edited HeLa cell lysate

**Lane 3 :** HepG2 cell lysate

Lysates/proteins at 20 µg per lane.

Performed under reducing conditions.

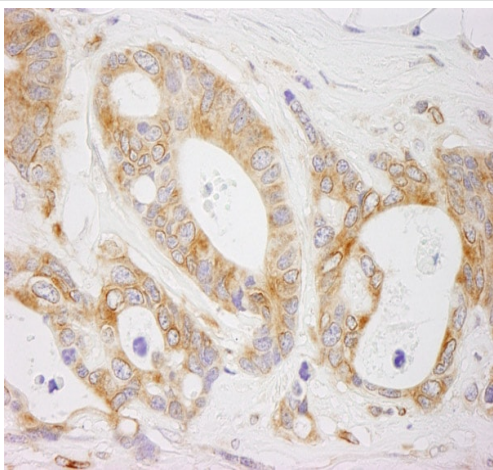
**Predicted band size:** 109 kDa

**Observed band size:** 125 kDa

**Lanes 1 - 3:** Merged signal (red and green). Green - ab85834 observed at 125 kDa. Red - loading control **ab7291** (Mouse anti-Alpha Tubulin [DM1A]) observed at 55 kDa.

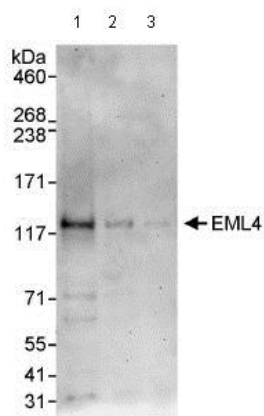
ab85834 was shown to react with EML4 in wild-type HeLa cells in Western blot with loss of signal observed in EML4 CRISPR-Cas9

edited cell line. Wild-type HeLa and EML4 CRISPR-Cas9 edited cell lysates were subjected to SDS-PAGE. Membranes were blocked in 3 % milk in TBS-T (0.1 % Tween®) before incubation with ab85834 and **ab7291** (Mouse anti-Alpha Tubulin [DM1A]) overnight at 4 °C at a 1 in 2000 dilution and a 1 in 20000 dilution respectively. Blots were incubated with Goat anti-Rabbit IgG H&L (IRDye® 800CW) preabsorbed (**ab216773**) and Goat anti-Mouse IgG H&L (IRDye® 680RD) preabsorbed (**ab216776**) secondary antibodies at 1 in 20000 dilution for 1 h at room temperature before imaging.



Immunohistochemistry (Formalin/PFA-fixed paraffin-embedded sections) - Anti-EML4 antibody (ab85834)

Immunohistochemistry (Formalin/PFA-fixed paraffin-embedded sections) analysis of human ovarian carcinoma tissue labelling EML4 with ab85834 at 1/1000 (1µg/ml). Detection: DAB.



Western blot - Anti-EML4 antibody (ab85834)

**All lanes :** Anti-EML4 antibody (ab85834) at 0.1 µg/ml

**Lane 1 :** Whole cell lysate from HeLa cells at 50 µg

**Lane 2 :** Whole cell lysate from HeLa cells at 15 µg

**Lane 3 :** Whole cell lysate from HeLa cells at 5 µg

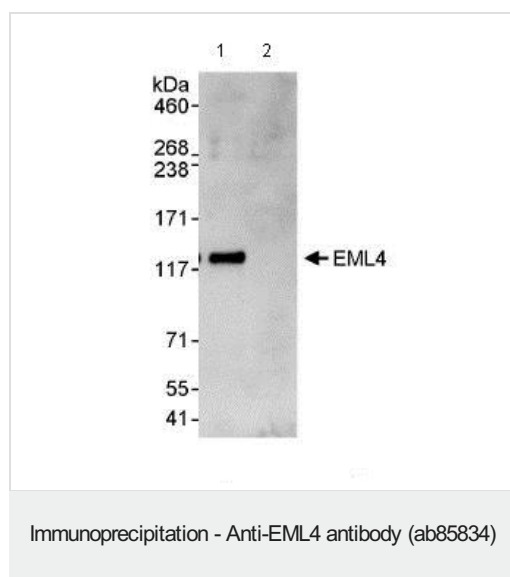
Developed using the ECL technique.

**Predicted band size:** 109 kDa

**Observed band size:** 120 kDa

**Additional bands at:** 31 kDa, 60 kDa, 72 kDa. We are unsure as to the identity of these extra bands.

**Exposure time:** 3 minutes



#### Immunoprecipitation/ Western Blot of ab85834

Lane 1: ab85834 at 3 $\mu$ g/mg whole cell lysate.

Lane 2: Control IgG.

ab85834 at 0.4 $\mu$ g/ml for WB.

Whole cell lysate from Hela cells at 1mg for IP, 20% of IP loaded.

Chemiluminescence with an exposure time of 30 seconds.

**Please note:** All products are "FOR RESEARCH USE ONLY. NOT FOR USE IN DIAGNOSTIC PROCEDURES"

#### Our Abpromise to you: Quality guaranteed and expert technical support

- Replacement or refund for products not performing as stated on the datasheet
- Valid for 12 months from date of delivery
- Response to your inquiry within 24 hours
- We provide support in Chinese, English, French, German, Japanese and Spanish
- Extensive multi-media technical resources to help you
- We investigate all quality concerns to ensure our products perform to the highest standards

If the product does not perform as described on this datasheet, we will offer a refund or replacement. For full details of the Abpromise, please visit <https://www.abcam.com/abpromise> or contact our technical team.

#### Terms and conditions

- Guarantee only valid for products bought direct from Abcam or one of our authorized distributors