

### Anti-EMR2 antibody ab75190

[1 Image](#)

#### Overview

<b>Product name</b>	Anti-EMR2 antibody
<b>Description</b>	Rabbit polyclonal to EMR2
<b>Host species</b>	Rabbit
<b>Tested applications</b>	<b>Suitable for:</b> WB
<b>Species reactivity</b>	<b>Reacts with:</b> Human
<b>Immunogen</b>	Synthetic peptide derived from an internal region of human EMR2
<b>Positive control</b>	HeLa cell extract
<b>General notes</b>	<p>The Life Science industry has been in the grips of a reproducibility crisis for a number of years. Abcam is leading the way in addressing this with our range of recombinant monoclonal antibodies and knockout edited cell lines for gold-standard validation. Please check that this product meets your needs before purchasing.</p> <p>If you have any questions, special requirements or concerns, please send us an inquiry and/or contact our Support team ahead of purchase. Recommended alternatives for this product can be found below, along with publications, customer reviews and Q&amp;As</p>

#### Properties

<b>Form</b>	Liquid
<b>Storage instructions</b>	Shipped at 4°C. Upon delivery aliquot and store at -20°C. Avoid freeze / thaw cycles.
<b>Storage buffer</b>	<p>pH: 7.40</p> <p>Preservative: 0.02% Sodium azide</p> <p>Constituents: 50% Glycerol (glycerin, glycerine), 0.87% Sodium chloride, PBS</p> <p>Without Mg<sup>2+</sup> and Ca<sup>2+</sup></p>
<b>Purity</b>	Immunogen affinity purified
<b>Purification notes</b>	ab75190 was affinity purified from rabbit antiserum by affinity chromatography using epitope specific immunogen.
<b>Clonality</b>	Polyclonal
<b>Isotype</b>	IgG

## Applications

### The Abpromise guarantee

Our **Abpromise guarantee** covers the use of ab75190 in the following tested applications.

The application notes include recommended starting dilutions; optimal dilutions/concentrations should be determined by the end user.

Application	Abreviews	Notes
WB		1/500 - 1/1000. Predicted molecular weight: 91 kDa.

## Target

### Function

Receptor probably involved in cell attachment.

### Tissue specificity

Expression is restricted to myeloid cells. Highest expression was found in peripheral blood leukocytes, followed by spleen and lymph nodes, with intermediate to low levels in thymus, bone marrow, fetal liver, placenta, and lung, and no expression in heart, brain, skeletal muscle, kidney, or pancreas. Expression is also detected in monocyte/macrophage and Jurkat cell lines but not in other cell lines tested.

### Sequence similarities

Belongs to the G-protein coupled receptor 2 family. LN-TM7 subfamily.  
Contains 5 EGF-like domains.  
Contains 1 GPS domain.

### Domain

The GPS domain is necessary, but not sufficient for receptor cleavage, which require the entire extracellular stalk.  
Binding to chondroitin sulfate is mediated by the fourth EGF domain.

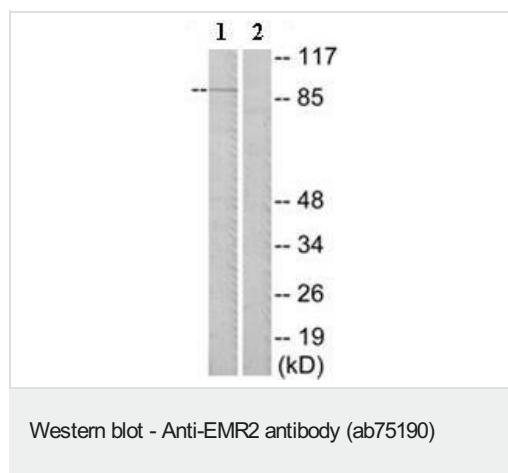
### Post-translational modifications

Autoproteolytically cleaved into 2 subunits, an extracellular alpha subunit and a seven-transmembrane beta subunit.

### Cellular localization

Cell membrane.

## Images



**All lanes :** Anti-EMR2 antibody (ab75190) at 1/500 dilution

**Lane 1 :** HeLa cell extract

**Lane 2 :** HeLa cell extract with immunising peptide at 10 µg

Lysates/proteins at 10 µg per lane.

**Predicted band size:** 91 kDa

**Observed band size:** 91 kDa

**Please note:** All products are "FOR RESEARCH USE ONLY. NOT FOR USE IN DIAGNOSTIC PROCEDURES"

**Our Abpromise to you: Quality guaranteed and expert technical support**

- Replacement or refund for products not performing as stated on the datasheet
- Valid for 12 months from date of delivery
- Response to your inquiry within 24 hours
- We provide support in Chinese, English, French, German, Japanese and Spanish
- Extensive multi-media technical resources to help you
- We investigate all quality concerns to ensure our products perform to the highest standards

If the product does not perform as described on this datasheet, we will offer a refund or replacement. For full details of the Abpromise, please visit <https://www.abcam.com/abpromise> or contact our technical team.

#### **Terms and conditions**

---

- Guarantee only valid for products bought direct from Abcam or one of our authorized distributors