


## Product datasheet

### Anti-EMX2 antibody ab94713

★★★★★ [4 Abreviews](#) [2 References](#) [2 Images](#)

#### Overview

---

<b>Product name</b>	Anti-EMX2 antibody
<b>Description</b>	Rabbit polyclonal to EMX2
<b>Host species</b>	Rabbit
<b>Tested applications</b>	<b>Suitable for:</b> WB
<b>Species reactivity</b>	<b>Reacts with:</b> Mouse, Human <b>Predicted to work with:</b> Rat, Chicken, Cow, Dog, Pig, Zebrafish 
<b>Immunogen</b>	Synthetic peptide. This information is proprietary to Abcam and/or its suppliers.
<b>Positive control</b>	WB: Mouse brain and hippocampus tissue lysates.
<b>General notes</b>	<p>The Life Science industry has been in the grips of a reproducibility crisis for a number of years. Abcam is leading the way in addressing this with our range of recombinant monoclonal antibodies and knockout edited cell lines for gold-standard validation. Please check that this product meets your needs before purchasing.</p> <p>If you have any questions, special requirements or concerns, please send us an inquiry and/or contact our Support team ahead of purchase. Recommended alternatives for this product can be found below, along with publications, customer reviews and Q&amp;As</p>

#### Properties

---

<b>Form</b>	Liquid
<b>Storage instructions</b>	Shipped at 4°C. Store at +4°C short term (1-2 weeks). Upon delivery aliquot. Store at -20°C or -80°C. Avoid freeze / thaw cycle.
<b>Storage buffer</b>	pH: 7.40 Preservative: 0.02% Sodium azide Constituent: PBS  Batches of this product that have a concentration < 1mg/ml may have BSA added as a stabilising agent. If you would like information about the formulation of a specific lot, please contact our scientific support team who will be happy to help.
<b>Purity</b>	Immunogen affinity purified
<b>Clonality</b>	Polyclonal
<b>Isotype</b>	IgG

## Applications

### The Abpromise guarantee

Our **Abpromise guarantee** covers the use of ab94713 in the following tested applications.

The application notes include recommended starting dilutions; optimal dilutions/concentrations should be determined by the end user.

Application	Abreviews	Notes
WB	★★★★★ (1)	Use a concentration of 1 µg/ml. Detects a band of approximately 28 kDa (predicted molecular weight: 28 kDa).

## Target

### Function

Transcription factor, which in cooperation with EMX2, acts to generate the boundary between the roof and archipallium in the developing brain. May function in combinations with OTX1/2 to specify cell fates in the developing central nervous system.

### Tissue specificity

Cerebral cortex.

### Involvement in disease

Defects in EMX2 are the cause of schizencephaly (SCHZC) [MIM:269160]. Schizencephaly is an extremely rare human congenital disorder characterized by a full-thickness cleft within the cerebral hemispheres. These clefts are lined with gray matter and most commonly involve the parasylvian regions. Large portions of the cerebral hemispheres may be absent and replaced by cerebro-spinal fluid.

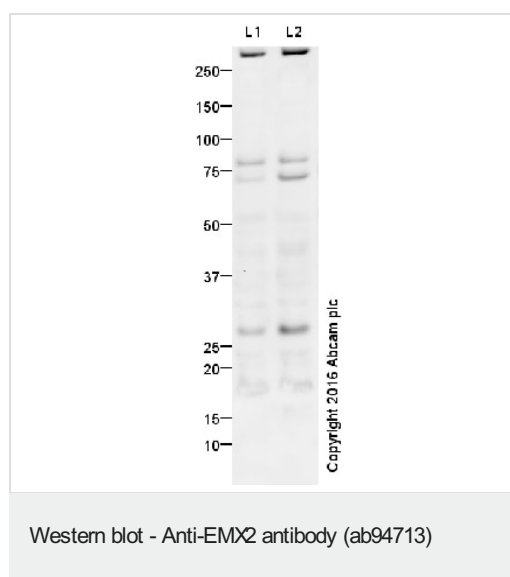
### Sequence similarities

Belongs to the EMX homeobox family.  
Contains 1 homeobox DNA-binding domain.

### Cellular localization

Nucleus.

## Images



**All lanes** : Anti-EMX2 antibody (ab94713) at 1 µg/ml

**Lane 1** : Mouse Hippocampus Tissue Lysate

**Lane 2** : Brain (Mouse) Tissue Lysate

Lysates/proteins at 10 µg per lane.

### Secondary

**All lanes** : Goat Anti-Rabbit IgG H&L (HRP) preadsorbed (**ab97080**) at 1/5000 dilution

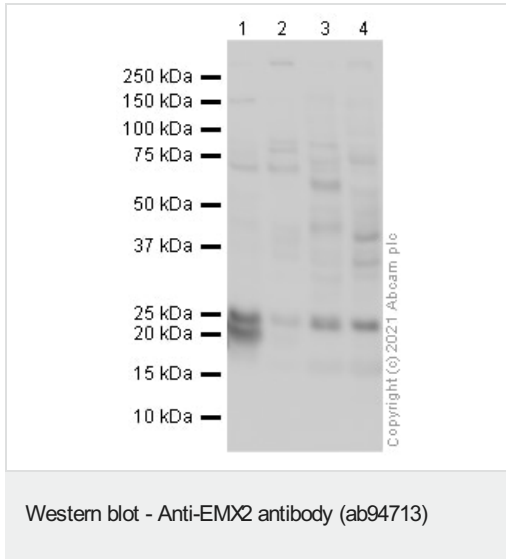
Developed using the ECL technique.

Performed under reducing conditions.

**Predicted band size:** 28 kDa

**Additional bands at:** 260 kDa (possible non-specific binding), 76 kDa (possible non-specific binding)

**Exposure time:** 16 minutes



**All lanes :** Anti-EMX2 antibody (ab94713) at 1 µg/ml

**Lane 1 :** Human Brain lysate

**Lane 2 :** Mouse Brain lysate

**Lane 3 :** NIH 3T3 whole cell lysate

**Lane 4 :** HepG2 whole cell lysate

Lysates/proteins at 20 µg per lane.

#### **Secondary**

**All lanes :** Goat Anti-Rabbit IgG H&L (HRP) at 1/50000 dilution

**Predicted band size:** 28 kDa

**Observed band size:** 28 kDa

**Exposure time:** 1 minute

Blocking buffer: 2% BSA

Gel type: MES

Additional bands: 15 kDa (possible non-specific binding), 75 kDa (possible non-specific binding)

**Please note:** All products are "FOR RESEARCH USE ONLY. NOT FOR USE IN DIAGNOSTIC PROCEDURES"

#### **Our Abpromise to you: Quality guaranteed and expert technical support**

- Replacement or refund for products not performing as stated on the datasheet
- Valid for 12 months from date of delivery
- Response to your inquiry within 24 hours
- We provide support in Chinese, English, French, German, Japanese and Spanish
- Extensive multi-media technical resources to help you
- We investigate all quality concerns to ensure our products perform to the highest standards

If the product does not perform as described on this datasheet, we will offer a refund or replacement. For full details of the Abpromise, please visit <https://www.abcam.com/abpromise> or contact our technical team.

## Terms and conditions

---

- Guarantee only valid for products bought direct from Abcam or one of our authorized distributors