

Product datasheet

Anti-Endo G antibody [EP1665Y] α b76122


KO **VALIDATED**

Recombinant

RabMAb[®]

[6 References](#) [3 Images](#)

Overview

Product name	Anti-Endo G antibody [EP1665Y]
Description	Rabbit monoclonal [EP1665Y] to Endo G
Host species	Rabbit
Tested applications	Suitable for: WB Unsuitable for: Flow Cyt, ICC/IF, IHC-P or IP
Species reactivity	Reacts with: Mouse, Human Predicted to work with: Rat 
Immunogen	Synthetic peptide within Human Endo G (C terminal). The exact sequence is proprietary.
Positive control	HepG2 whole cell lysate (ab7900)
General notes	<p>This product is a recombinant monoclonal antibody, which offers several advantages including:</p> <ul style="list-style-type: none"> - High batch-to-batch consistency and reproducibility - Improved sensitivity and specificity - Long-term security of supply - Animal-free production <p>For more information see here.</p> <p>Our RabMAb[®] technology is a patented hybridoma-based technology for making rabbit monoclonal antibodies. For details on our patents, please refer to RabMAb[®] patents.</p>

Properties

Form	Liquid
Storage instructions	Shipped at 4°C. Upon delivery aliquot and store at -20°C. Avoid freeze / thaw cycles.
Storage buffer	pH: 7.20 Preservative: 0.01% Sodium azide Constituents: 9% PBS, 40% Glycerol (glycerin, glycerine), 0.05% BSA, 50% Tissue culture supernatant
Purity	Protein A purified
Clonality	Monoclonal
Clone number	EP1665Y

Isotype IgG

Applications

The Abpromise guarantee Our **Abpromise guarantee** covers the use of ab76122 in the following tested applications. The application notes include recommended starting dilutions; optimal dilutions/concentrations should be determined by the end user.

Application	Abreviews	Notes
WB		1/2000 - 1/5000. Detects a band of approximately 35 kDa (predicted molecular weight: 36 kDa).

Application notes Is unsuitable for Flow Cyt, ICC/IF, IHC-P or IP.

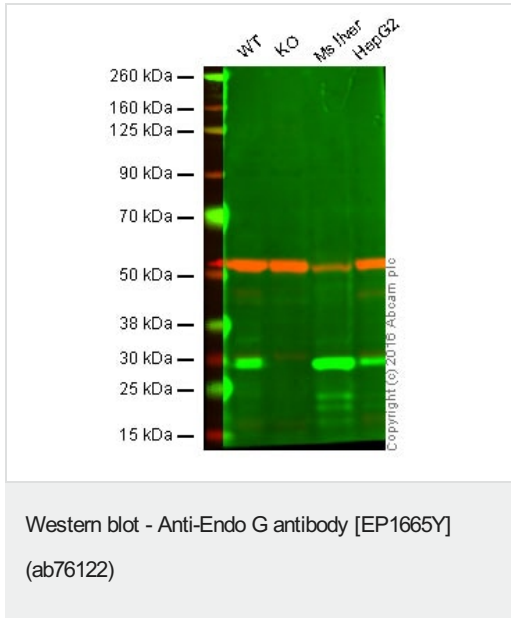
Target

Function Cleaves DNA at double-stranded (DG)n.(DC)n and at single-stranded (DC)n tracts. In addition to deoxyribonuclease activities, also has ribonuclease (RNase) and RNase H activities. Capable of generating the RNA primers required by DNA polymerase gamma to initiate replication of mitochondrial DNA.

Sequence similarities Belongs to the DNA/RNA non-specific endonuclease family.

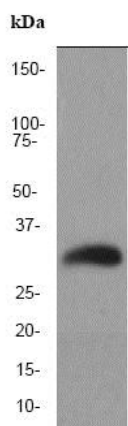
Cellular localization Mitochondrion.

Images



Lane 1: Wild-type HAP1 cell lysate (20 µg)
Lane 2: Endo G HAP1 cell lysate (20 µg)
Lane 3: Mouse liver tissue lysate (20 µg)
Lane 4: HepG2 cell lysate (20 µg)
Lanes 1 - 4: Merged signal (red and green). Green - ab76122 observed at 29 kDa. Red - loading control, **ab7291**, observed at 52 kDa.

ab76122 was shown to specifically react with Endo G when Endo G knockout samples were used. Wild-type and Endo G knockout samples were subjected to SDS-PAGE. ab76122 and **ab7291** (loading control to alpha tubulin) were diluted 1/2000 and 1/10000 respectively and incubated overnight at 4°C. Blots were developed with Goat anti-Rabbit IgG H&L (IRDye® 800CW) preadsorbed (**ab216773**) and Goat anti-Mouse IgG H&L (IRDye® 680RD) preadsorbed (**ab216776**) secondary antibodies at 1/10000 dilution for 1 h at room temperature before imaging.



Anti-Endo G antibody [EP1665Y] (ab76122) at 1/2000 dilution +
HepG2 cell lysate at 10 µg

Secondary

HRP labelled goat anti-rabbit at 1/1000 dilution

Developed using the ECL technique.

Predicted band size: 36 kDa

Observed band size: 35 kDa

Western blot - Anti-Endo G antibody [EP1665Y]
(ab76122)

Why choose a recombinant antibody?



Research with confidence
Consistent and reproducible results



Long-term and scalable supply
Recombinant technology



Success from the first experiment
Confirmed specificity



Ethical standards compliant
Animal-free production

Anti-Endo G antibody [EP1665Y] (ab76122)

Please note: All products are "FOR RESEARCH USE ONLY. NOT FOR USE IN DIAGNOSTIC PROCEDURES"

Our Abpromise to you: Quality guaranteed and expert technical support

- Replacement or refund for products not performing as stated on the datasheet
- Valid for 12 months from date of delivery
- Response to your inquiry within 24 hours
- We provide support in Chinese, English, French, German, Japanese and Spanish
- Extensive multi-media technical resources to help you
- We investigate all quality concerns to ensure our products perform to the highest standards

If the product does not perform as described on this datasheet, we will offer a refund or replacement. For full details of the Abpromise, please visit <https://www.abcam.com/abpromise> or contact our technical team.

Terms and conditions

- Guarantee only valid for products bought direct from Abcam or one of our authorized distributors