

Product datasheet

Anti-Endothelin 1 antibody ab88093

[2 Images](#)

Overview

Product name	Anti-Endothelin 1 antibody
Description	Mouse polyclonal to Endothelin 1
Host species	Mouse
Tested applications	Suitable for: WB
Species reactivity	Reacts with: Human
Immunogen	Recombinant full length protein within Human Endothelin 1. The exact immunogen sequence used to generate this antibody is proprietary information. If additional detail on the immunogen is needed to determine the suitability of the antibody for your needs, please contact our Scientific Support team to discuss your requirements.
Positive control	Human placenta lysate and transfected 293T cell line.
General notes	<p>The Life Science industry has been in the grips of a reproducibility crisis for a number of years. Abcam is leading the way in addressing this with our range of recombinant monoclonal antibodies and knockout edited cell lines for gold-standard validation. Please check that this product meets your needs before purchasing.</p> <p>If you have any questions, special requirements or concerns, please send us an inquiry and/or contact our Support team ahead of purchase. Recommended alternatives for this product can be found below, along with publications, customer reviews and Q&As</p>

Properties

Form	Liquid
Storage instructions	Shipped at 4°C. Upon delivery aliquot and store at -20°C or -80°C. Avoid repeated freeze / thaw cycles.
Storage buffer	pH: 7.40 Constituent: 100% PBS
Purity	Protein A purified
Clonality	Polyclonal
Isotype	IgG

Applications

The Abpromise guarantee

Our **Abpromise guarantee** covers the use of ab88093 in the following tested applications.

The application notes include recommended starting dilutions; optimal dilutions/concentrations should be determined by the end user.

Application	Abreviews	Notes
WB		Use a concentration of 1 µg/ml. Detects a band of approximately 24 kDa (predicted molecular weight: 24 kDa).

Target

Function

Endothelins are endothelium-derived vasoconstrictor peptides.

Tissue specificity

Expressed in lung, placental stem villi vessels and in cultured placental vascular smooth muscle cells.

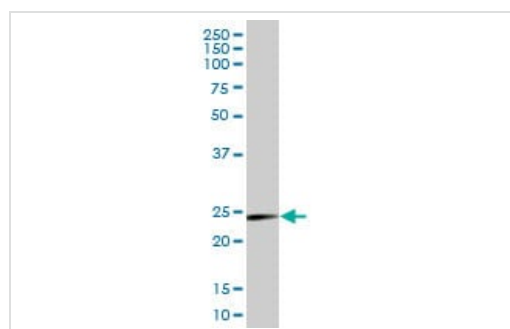
Sequence similarities

Belongs to the endothelin/sarafotoxin family.

Cellular localization

Secreted.

Images

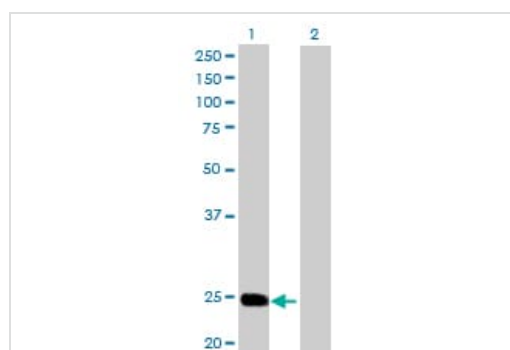


Western blot - Anti-Endothelin 1 antibody (ab88093)

Anti-Endothelin 1 antibody (ab88093) at 1 µg/ml + Human placenta lysate at 50 µg

Predicted band size: 24 kDa

Observed band size: 24 kDa



Western blot - Anti-Endothelin 1 antibody (ab88093)

All lanes : Anti-Endothelin 1 antibody (ab88093) at 1 µg/ml

Lane 1 : 293T cell line (Endothelin 1 transfected lysate)

Lane 2 : 293T cell line (Non-transfected lysate)

Lysates/proteins at 25 µg per lane.

Predicted band size: 24 kDa

Observed band size: 24 kDa

Please note: All products are "FOR RESEARCH USE ONLY. NOT FOR USE IN DIAGNOSTIC PROCEDURES"

Our Abpromise to you: Quality guaranteed and expert technical support

- Replacement or refund for products not performing as stated on the datasheet
- Valid for 12 months from date of delivery
- Response to your inquiry within 24 hours

- We provide support in Chinese, English, French, German, Japanese and Spanish
- Extensive multi-media technical resources to help you
- We investigate all quality concerns to ensure our products perform to the highest standards

If the product does not perform as described on this datasheet, we will offer a refund or replacement. For full details of the Abpromise, please visit <https://www.abcam.com/abpromise> or contact our technical team.

Terms and conditions

- Guarantee only valid for products bought direct from Abcam or one of our authorized distributors