

Product datasheet

Anti-Endothelin 2/ET-2 antibody ab153867

★★★★★ [1 Abreviews](#) [1 Image](#)

Overview

| | |
|----------------------------|---|
| Product name | Anti-Endothelin 2/ET-2 antibody |
| Description | Rabbit polyclonal to Endothelin 2/ET-2 |
| Host species | Rabbit |
| Tested applications | Suitable for: WB |
| Species reactivity | Reacts with: Human |
| Immunogen | Recombinant fragment corresponding to Human Endothelin 2/ET-2 aa 1-178. Database link: P20800 |
| Positive control | A549 whole cell lysate, HeLa whole cell lysate (ab150035) |
| General notes | <p>The Life Science industry has been in the grips of a reproducibility crisis for a number of years. Abcam is leading the way in addressing this with our range of recombinant monoclonal antibodies and knockout edited cell lines for gold-standard validation. Please check that this product meets your needs before purchasing.</p> <p>If you have any questions, special requirements or concerns, please send us an inquiry and/or contact our Support team ahead of purchase. Recommended alternatives for this product can be found below, along with publications, customer reviews and Q&As</p> |

Properties

| | |
|-----------------------------|---|
| Form | Liquid |
| Storage instructions | Shipped at 4°C. Upon delivery aliquot. Store at -20°C or -80°C. Avoid freeze / thaw cycle. |
| Storage buffer | <p>pH: 7</p> <p>Preservative: 0.01% Thimerosal (merthiolate)</p> <p>Constituents: 1.21% Tris, 0.75% Glycine, 10% Glycerol (glycerin, glycerine)</p> |
| Purity | Immunogen affinity purified |
| Clonality | Polyclonal |
| Isotype | IgG |

Applications

The Abpromise guarantee Our [Abpromise guarantee](#) covers the use of ab153867 in the following tested applications.

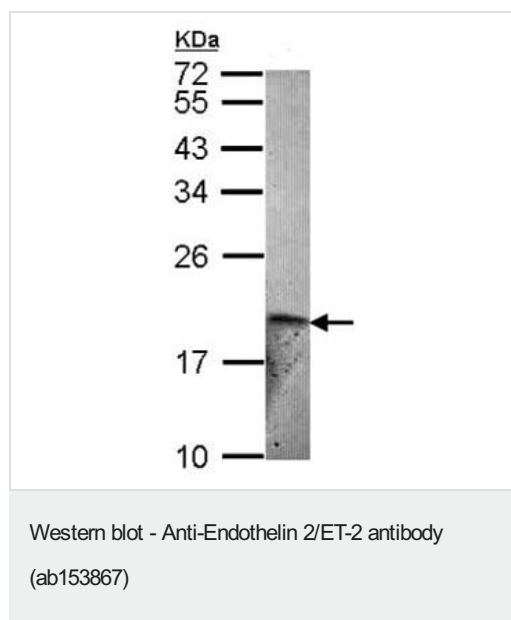
The application notes include recommended starting dilutions; optimal dilutions/concentrations should be determined by the end user.

| Application | Abreviews | Notes |
|-------------|-----------|---|
| WB | ★★★★★ (1) | 1/500 - 1/3000. Predicted molecular weight: 20 kDa. |

Target

| | |
|-----------------------|---|
| Function | Endothelins are endothelium-derived vasoconstrictor peptides. |
| Tissue specificity | Expressed in lung, but not in placental stem villi vessels or cultured placental villi smooth muscle cells. |
| Sequence similarities | Belongs to the endothelin/sarafotoxin family. |
| Cellular localization | Secreted. |

Images



Anti-Endothelin 2/ET-2 antibody (ab153867) at 1/1000 dilution + HeLa whole cell lysate at 30 µg

Predicted band size: 20 kDa

12% SDS PAGE

Please note: All products are "FOR RESEARCH USE ONLY. NOT FOR USE IN DIAGNOSTIC PROCEDURES"

Our Abpromise to you: Quality guaranteed and expert technical support

- Replacement or refund for products not performing as stated on the datasheet
- Valid for 12 months from date of delivery
- Response to your inquiry within 24 hours
- We provide support in Chinese, English, French, German, Japanese and Spanish
- Extensive multi-media technical resources to help you
- We investigate all quality concerns to ensure our products perform to the highest standards

If the product does not perform as described on this datasheet, we will offer a refund or replacement. For full details of the Abpromise,

please visit <https://www.abcam.com/abpromise> or contact our technical team.

Terms and conditions

- Guarantee only valid for products bought direct from Abcam or one of our authorized distributors