




## Product datasheet

# Anti-Endothelin A Receptor/ET-A antibody ab117521

★★★★★ [2 Abreviews](#) [16 References](#) [4 Images](#)

### Overview

<b>Product name</b>	Anti-Endothelin A Receptor/ET-A antibody
<b>Description</b>	Rabbit polyclonal to Endothelin A Receptor/ET-A
<b>Host species</b>	Rabbit
<b>Tested applications</b>	<b>Suitable for:</b> ICC, WB, IHC-P
<b>Species reactivity</b>	<b>Reacts with:</b> Mouse, Human <b>Predicted to work with:</b> Cow, Dog, Pig 
<b>Immunogen</b>	Synthetic peptide corresponding to Mouse Endothelin A Receptor/ET-A aa 400-500 (C terminal) conjugated to keyhole limpet haemocyanin. Database link: <a href="#">Q61614</a>  <a href="#">Run BLAST with</a>  <a href="#">Run BLAST with</a>
<b>Positive control</b>	Mouse dorsal root ganglia; Mouse heart tissue; Endothelin A Receptor/ET-A transfected cells; Mouse heart lysate
<b>General notes</b>	We have received mixed feedback about mouse cross reactivity, some lot works and some doesn't so we no longer guarantee this species.  The Life Science industry has been in the grips of a reproducibility crisis for a number of years. Abcam is leading the way in addressing this with our range of recombinant monoclonal antibodies and knockout edited cell lines for gold-standard validation. Please check that this product meets your needs before purchasing.  If you have any questions, special requirements or concerns, please send us an inquiry and/or contact our Support team ahead of purchase. Recommended alternatives for this product can be found below, along with publications, customer reviews and Q&As

### Properties

<b>Form</b>	Liquid
<b>Storage instructions</b>	Shipped at 4°C. Upon delivery aliquot and store at -20°C. Avoid freeze / thaw cycles.
<b>Storage buffer</b>	Preservative: 0.02% Sodium azide Constituent: 99% Whole serum
<b>Purity</b>	Whole antiserum
<b>Clonality</b>	Polyclonal

Isotype

IgG

## Applications

### The Abpromise guarantee

Our **Abpromise guarantee** covers the use of ab117521 in the following tested applications.

The application notes include recommended starting dilutions; optimal dilutions/concentrations should be determined by the end user.

Application	Abreviews	Notes
ICC		1/5000.
WB		1/5000. Predicted molecular weight: 49 kDa.
IHC-P	★★★★★ (1)	1/2000.

## Target

### Function

Receptor for endothelin-1. Mediates its action by association with G proteins that activate a phosphatidylinositol-calcium second messenger system. The rank order of binding affinities for ET-A is: ET1 > ET2 >> ET3.

### Tissue specificity

Isoform 1, isoform 3 and isoform 4 are expressed in a variety of tissues, with highest levels in the aorta and cerebellum, followed by lung, atrium and cerebral cortex, lower levels in the placenta, kidney, adrenal gland, duodenum, colon, ventricle and liver but no expression in umbilical vein endothelial cells. Within the placenta, isoform 1, isoform 2, isoform 3 and isoform 4 are expressed in the villi and stem villi vessels.

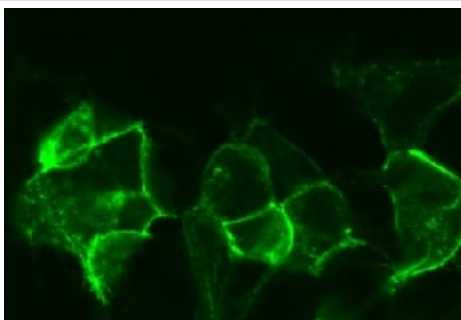
### Sequence similarities

Belongs to the G-protein coupled receptor 1 family. Endothelin receptor subfamily. EDNRA sub-subfamily.

### Cellular localization

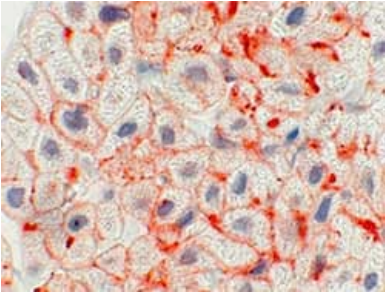
Cell membrane.

## Images



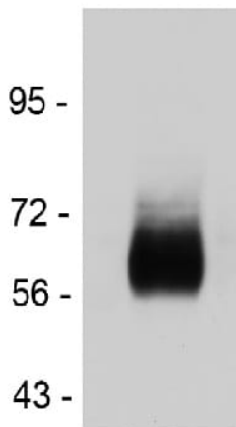
ab117521, at 1/5000 dilution, staining Endothelin A Receptor/ET-A in HEK293 transfected with Endothelin A receptor cells by Immunocytochemistry.

Immunocytochemistry - Anti-Endothelin A Receptor/ET-A antibody (ab117521)



Immunohistochemistry (Formalin/PFA-fixed paraffin-embedded sections) - Anti-Endothelin A Receptor/ET-A antibody (ab117521)

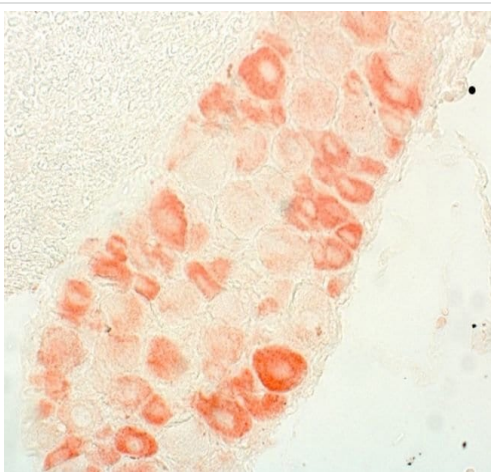
**ab117251**, at 1/2000 dilution, staining Endothelin A Receptor/ET-A in the atrium of mouse heart by Immunohistochemistry.



Western blot - Anti-Endothelin A Receptor/ET-A antibody (ab117521)

Anti-Endothelin A Receptor/ET-A antibody (ab117521) at 1/5000 dilution + Mouse heart lysate

**Predicted band size:** 49 kDa



Immunohistochemistry (Formalin/PFA-fixed paraffin-embedded sections) - Anti-Endothelin A Receptor/ET-A antibody (ab117521)

Immunohistochemistry analysis of mouse dorsal root ganglia labeling Endothelin A Receptor/ET-A with ab117521.

**Please note:** All products are "FOR RESEARCH USE ONLY. NOT FOR USE IN DIAGNOSTIC PROCEDURES"

### **Our Abpromise to you: Quality guaranteed and expert technical support**

---

- Replacement or refund for products not performing as stated on the datasheet
- Valid for 12 months from date of delivery
- Response to your inquiry within 24 hours
  
- We provide support in Chinese, English, French, German, Japanese and Spanish
- Extensive multi-media technical resources to help you
- We investigate all quality concerns to ensure our products perform to the highest standards

If the product does not perform as described on this datasheet, we will offer a refund or replacement. For full details of the Abpromise, please visit <https://www.abcam.com/abpromise> or contact our technical team.

### **Terms and conditions**

---

- Guarantee only valid for products bought direct from Abcam or one of our authorized distributors