


Product datasheet

Anti-Endothelin A Receptor/ET-A antibody - Extracellular domain ab219358

3 Images

Overview

Product name	Anti-Endothelin A Receptor/ET-A antibody - Extracellular domain
Description	Rabbit polyclonal to Endothelin A Receptor/ET-A - Extracellular domain
Host species	Rabbit
Specificity	BLAST analysis of the peptide immunogen showed no homology with other human proteins.
Tested applications	Suitable for: IHC-P
Species reactivity	Reacts with: Human Predicted to work with: Mouse, Rat, Sheep, Rabbit, Horse, Hamster, Cow, Dog, Pig, Monkey, Gorilla 
Immunogen	Synthetic peptide corresponding to Human Endothelin A Receptor/ET-A (extracellular). (18 amino acid peptide from 2nd extracellular domain). Database link: P25101
Positive control	Human lung small cell carcinoma and lung adenocarcinoma tissues; Human heart, cardiac myocyte tissue.
General notes	<p>The Life Science industry has been in the grips of a reproducibility crisis for a number of years. Abcam is leading the way in addressing this with our range of recombinant monoclonal antibodies and knockout edited cell lines for gold-standard validation. Please check that this product meets your needs before purchasing.</p> <p>If you have any questions, special requirements or concerns, please send us an inquiry and/or contact our Support team ahead of purchase. Recommended alternatives for this product can be found below, along with publications, customer reviews and Q&As</p>

Properties

Form	Liquid
Storage instructions	Shipped at 4°C. Store at +4°C short term (1-2 weeks). Upon delivery aliquot. Store at -20°C long term. Avoid freeze / thaw cycle.
Storage buffer	pH: 7.4 Preservative: 0.099% Sodium azide Constituent: 99% PBS

Purity	Immunogen affinity purified
Clonality	Polyclonal
Isotype	IgG

Applications

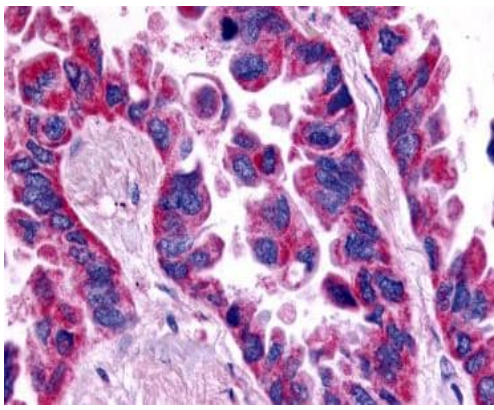
The Abpromise guarantee Our **Abpromise guarantee** covers the use of ab219358 in the following tested applications. The application notes include recommended starting dilutions; optimal dilutions/concentrations should be determined by the end user.

Application	Abreviews	Notes
IHC-P		Use a concentration of 5 µg/ml. Perform heat mediated antigen retrieval before commencing with IHC staining protocol.

Target

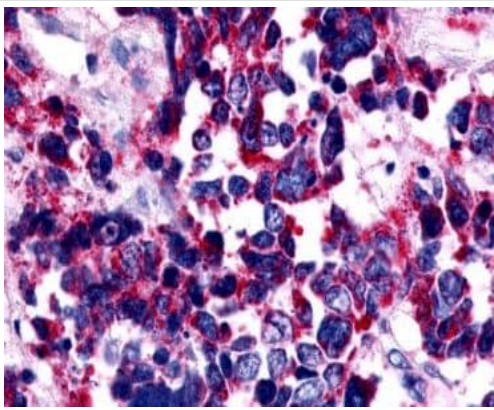
Function	Receptor for endothelin-1. Mediates its action by association with G proteins that activate a phosphatidylinositol-calcium second messenger system. The rank order of binding affinities for ET-A is: ET1 > ET2 >> ET3.
Tissue specificity	Isoform 1, isoform 3 and isoform 4 are expressed in a variety of tissues, with highest levels in the aorta and cerebellum, followed by lung, atrium and cerebral cortex, lower levels in the placenta, kidney, adrenal gland, duodenum, colon, ventricle and liver but no expression in umbilical vein endothelial cells. Within the placenta, isoform 1, isoform 2, isoform 3 and isoform 4 are expressed in the villi and stem villi vessels.
Sequence similarities	Belongs to the G-protein coupled receptor 1 family. Endothelin receptor subfamily. EDNRA sub-subfamily.
Cellular localization	Cell membrane.

Images



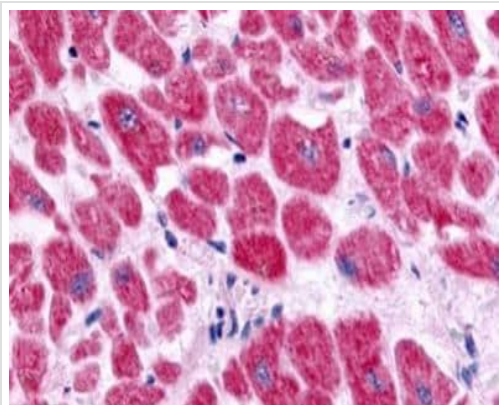
Immunohistochemistry (Formalin/PFA-fixed paraffin-embedded sections) - Anti-Endothelin A Receptor/ET-A antibody - Extracellular domain (ab219358)

Immunohistochemical analysis of formalin-fixed, paraffin-embedded Human lung adenocarcinoma tissue labeling Endothelin A Receptor/ET-A with ab219358 at 5 µg/ml.



Immunohistochemistry (Formalin/PFA-fixed paraffin-embedded sections) - Anti-Endothelin A Receptor/ET-A antibody - Extracellular domain (ab219358)

Immunohistochemical analysis of formalin-fixed, paraffin-embedded Human lung small cell carcinoma tissue labeling Endothelin A Receptor/ET-A with ab219358 at 5 µg/ml.



Immunohistochemical analysis of formalin-fixed, paraffin-embedded Human heart cardiac myocytes tissue labeling Endothelin A Receptor/ET-A with ab219358 at 5 µg/ml.

Immunohistochemistry (Formalin/PFA-fixed paraffin-embedded sections) - Anti-Endothelin A Receptor/ET-A antibody - Extracellular domain (ab219358)

Please note: All products are "FOR RESEARCH USE ONLY. NOT FOR USE IN DIAGNOSTIC PROCEDURES"

Our Abpromise to you: Quality guaranteed and expert technical support

- Replacement or refund for products not performing as stated on the datasheet
- Valid for 12 months from date of delivery
- Response to your inquiry within 24 hours
- We provide support in Chinese, English, French, German, Japanese and Spanish
- Extensive multi-media technical resources to help you
- We investigate all quality concerns to ensure our products perform to the highest standards

If the product does not perform as described on this datasheet, we will offer a refund or replacement. For full details of the Abpromise, please visit <https://www.abcam.com/abpromise> or contact our technical team.

Terms and conditions

- Guarantee only valid for products bought direct from Abcam or one of our authorized distributors