

Anti-Endothelium antibody [PAL-E] ab8086

★★★★★ [2 Abreviews](#) [11 References](#) [1 Image](#)

Overview

Product name	Anti-Endothelium antibody [PAL-E]
Description	Mouse monoclonal [PAL-E] to Endothelium
Host species	Mouse
Specificity	Reactivity with: Lymphatic endothelium :not detectable. Sinus histiocytes :not detectable. Megakaryocytes :not detectable.
Tested applications	Suitable for: IHC-Fr Unsuitable for: WB
Species reactivity	Reacts with: Rabbit, Goat, Dog, Human, Pig Does not react with: Mouse, Rat, Chicken
Immunogen	Tissue, cells or virus corresponding to Human Endothelium.
Positive control	IHC-Fr: human spleen tissue
General notes	<p>The antibody only stains human and various animal (goat, rabbit, pig, dog) blood vessels with the exception of arteries.</p> <p>The Life Science industry has been in the grips of a reproducibility crisis for a number of years. Abcam is leading the way in addressing this with our range of recombinant monoclonal antibodies and knockout edited cell lines for gold-standard validation. Please check that this product meets your needs before purchasing.</p> <p>If you have any questions, special requirements or concerns, please send us an inquiry and/or contact our Support team ahead of purchase. Recommended alternatives for this product can be found below, along with publications, customer reviews and Q&As</p>

Properties

Form	Liquid
Storage instructions	Shipped at 4°C. Store at +4°C short term (1-2 weeks). Upon delivery aliquot. Store at -20°C long term.
Storage buffer	pH: 7.3 Preservative: 0.07% Sodium azide
Purity	Tissue culture supernatant

Primary antibody notes	The antibody only stains human and various animal (goat, rabbit, pig, dog) blood vessels with the exception of arteries.
Clonality	Monoclonal
Clone number	PAL-E
Isotype	IgG2a

Applications

The Abpromise guarantee Our [Abpromise guarantee](#) covers the use of ab8086 in the following tested applications. The application notes include recommended starting dilutions; optimal dilutions/concentrations should be determined by the end user.

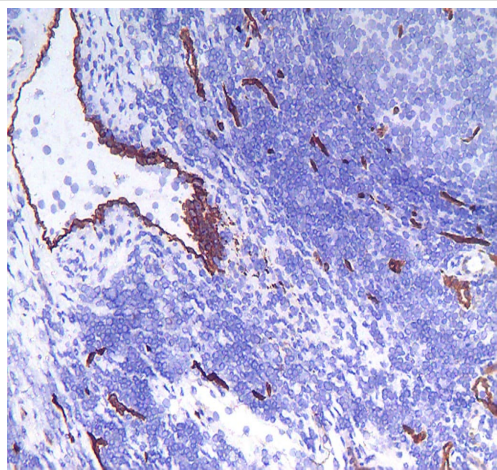
Application	Abreviews	Notes
IHC-Fr	★★★★★ (1)	1/100. Fix with acetone.

Application notes Is unsuitable for WB.

Target

Relevance The endothelium is located at the interface between the blood and the vessel wall. The cells are in close contact and form a slick layer that prevents blood cell interaction with the vessel wall as blood moves through the vessel lumen. The endothelium consists of simple squamous epithelium that lines the lumen of all blood vessels. It plays a critical role in the mechanics of blood flow, the regulation of coagulation, leukocyte adhesion, and vascular smooth muscle cell growth, and also serves as a barrier to the transvascular diffusion of liquids and solutes. For years the endothelium was thought of as an inert single layer of cells that passively allow the passage of water and other small molecules across the vessel wall. However, this dynamic tissue performs many other active functions, such as the secretion and modification of vasoactive substances and the contraction and relaxation of vascular smooth muscle.

Images



Immunohistochemistry (Frozen sections) - Anti-Endothelium antibody [PAL-E] (ab8086)

Immunohistochemistry (Frozen sections) analysis of frozen human sleep tissue section labeling Endothelium with ab8086. The frozen section is fixated using acetone.

The magnification is 100 times.

Please note: All products are "FOR RESEARCH USE ONLY. NOT FOR USE IN DIAGNOSTIC PROCEDURES"

Our Abpromise to you: Quality guaranteed and expert technical support

- Replacement or refund for products not performing as stated on the datasheet
- Valid for 12 months from date of delivery
- Response to your inquiry within 24 hours
- We provide support in Chinese, English, French, German, Japanese and Spanish
- Extensive multi-media technical resources to help you
- We investigate all quality concerns to ensure our products perform to the highest standards

If the product does not perform as described on this datasheet, we will offer a refund or replacement. For full details of the Abpromise, please visit <https://www.abcam.com/abpromise> or contact our technical team.

Terms and conditions

- Guarantee only valid for products bought direct from Abcam or one of our authorized distributors