


Product datasheet

Anti-ENO1 antibody [253] - N-terminal ab190365

★★★★★ [1 Abreviews](#) [3 References](#) [2 Images](#)

Overview

Product name	Anti-ENO1 antibody [253] - N-terminal
Description	Mouse monoclonal [253] to ENO1 - N-terminal
Host species	Mouse
Specificity	ab190365 was tested for binding to expressed bovine ENO1, ENO2 and ENO3 and shown to be specific for only ENO1.
Tested applications	Suitable for: WB, ICC/IF
Species reactivity	Reacts with: Mouse, Rat, Human Predicted to work with: Pig 
Immunogen	Synthetic peptide corresponding to Cow ENO1 (N terminal). Immunogen corresponds to 12 amino acids synthesized on a 8-amine lysine core using the multiple antigen presentation method. Database link: Q9XSJ4
Positive control	HeLa cell lysate and rat 3T3 cells.
General notes	<p>The Life Science industry has been in the grips of a reproducibility crisis for a number of years. Abcam is leading the way in addressing this with our range of recombinant monoclonal antibodies and knockout edited cell lines for gold-standard validation. Please check that this product meets your needs before purchasing.</p> <p>If you have any questions, special requirements or concerns, please send us an inquiry and/or contact our Support team ahead of purchase. Recommended alternatives for this product can be found below, along with publications, customer reviews and Q&As</p>

Properties

Form	Liquid
Storage instructions	Shipped at 4°C. Store at +4°C short term (1-2 weeks). Upon delivery aliquot. Store at -20°C or -80°C. Avoid freeze / thaw cycle.
Storage buffer	Preservative: 0.07% Sodium azide Constituent: PBS
Purity	Protein G purified
Clonality	Monoclonal
Clone number	253

Applications

The Abpromise guarantee

Our **Abpromise guarantee** covers the use of ab190365 in the following tested applications.

The application notes include recommended starting dilutions; optimal dilutions/concentrations should be determined by the end user.

Application	Abreviews	Notes
WB		1/5000 - 1/10000. Detects a band of approximately 47 kDa (predicted molecular weight: 47 kDa).
ICC/IF		1/2000 - 1/5000.

Target

Function

Multifunctional enzyme that, as well as its role in glycolysis, plays a part in various processes such as growth control, hypoxia tolerance and allergic responses. May also function in the intravascular and pericellular fibrinolytic system due to its ability to serve as a receptor and activator of plasminogen on the cell surface of several cell-types such as leukocytes and neurons. Stimulates immunoglobulin production.

MBP1 binds to the myc promoter and acts as a transcriptional repressor. May be a tumor suppressor.

Tissue specificity

The alpha/alpha homodimer is expressed in embryo and in most adult tissues. The alpha/beta heterodimer and the beta/beta homodimer are found in striated muscle, and the alpha/gamma heterodimer and the gamma/gamma homodimer in neurons.

Pathway

Carbohydrate degradation; glycolysis; pyruvate from D-glyceraldehyde 3-phosphate: step 4/5.

Sequence similarities

Belongs to the enolase family.

Developmental stage

During ontogenesis, there is a transition from the alpha/alpha homodimer to the alpha/beta heterodimer in striated muscle cells, and to the alpha/gamma heterodimer in nerve cells.

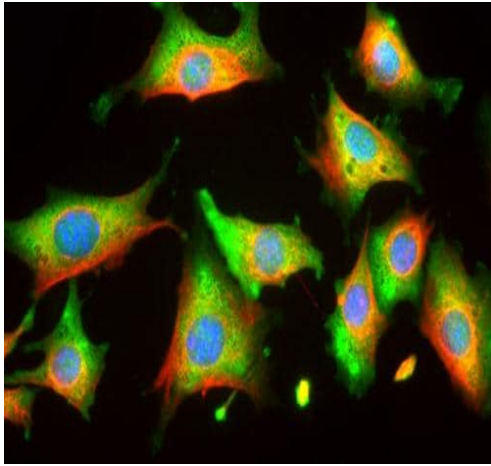
Post-translational modifications

ISGylated.

Cellular localization

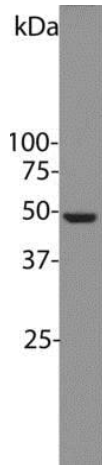
Nucleus and Cytoplasm. Cell membrane. Cytoplasm > myofibril > sarcomere > M line. Can translocate to the plasma membrane in either the homodimeric (alpha/alpha) or heterodimeric (alpha/gamma) form. ENO1 is localized to the M line.

Images



Immunofluorescence analysis of rat 3T3 cells, labeling ENO1 using ab190365 at a 1/2000 dilution (green). Counterstained with an antibody against Vimentin (red) and DNA (blue).

Immunocytochemistry/ Immunofluorescence - Anti-ENO1 antibody [253] - N-terminal (ab190365)



Anti-ENO1 antibody [253] - N-terminal (ab190365) at 1/5000 dilution + HeLa (Human epithelial cell line from cervix adenocarcinoma) cell lysate

Predicted band size: 47 kDa

Observed band size: 47 kDa

Western blot - Anti-ENO1 antibody [253] - N-terminal (ab190365)

Please note: All products are "FOR RESEARCH USE ONLY. NOT FOR USE IN DIAGNOSTIC PROCEDURES"

Our Abpromise to you: Quality guaranteed and expert technical support

- Replacement or refund for products not performing as stated on the datasheet
- Valid for 12 months from date of delivery
- Response to your inquiry within 24 hours

- We provide support in Chinese, English, French, German, Japanese and Spanish
- Extensive multi-media technical resources to help you
- We investigate all quality concerns to ensure our products perform to the highest standards

If the product does not perform as described on this datasheet, we will offer a refund or replacement. For full details of the Abpromise, please visit <https://www.abcam.com/abpromise> or contact our technical team.

Terms and conditions

- Guarantee only valid for products bought direct from Abcam or one of our authorized distributors