

Product datasheet

Anti-ENPP2/ATX antibody ab137590

★☆☆☆☆ [1 Abreviews](#) [3 References](#) [3 Images](#)

Overview

Product name	Anti-ENPP2/ATX antibody
Description	Rabbit polyclonal to ENPP2/ATX
Host species	Rabbit
Tested applications	Suitable for: WB, ICC/IF
Species reactivity	Reacts with: Human
Immunogen	Recombinant fragment corresponding to Human ENPP2/ATX aa 540-803. Database link: Q13822
Positive control	WB: Mouse brown adipose tissue, HepG2 and MOLT-4 whole cell lysate. Rat and mouse brain. Human Cerebrospinal Fluid. ICC/IF: SK-N-SH cells.
General notes	<p>The Life Science industry has been in the grips of a reproducibility crisis for a number of years. Abcam is leading the way in addressing this with our range of recombinant monoclonal antibodies and knockout edited cell lines for gold-standard validation. Please check that this product meets your needs before purchasing.</p> <p>If you have any questions, special requirements or concerns, please send us an inquiry and/or contact our Support team ahead of purchase. Recommended alternatives for this product can be found below, along with publications, customer reviews and Q&As</p>

Properties

Form	Liquid
Storage instructions	Shipped at 4°C. Store at +4°C short term (1-2 weeks). Upon delivery aliquot. Store at -20°C or -80°C. Avoid freeze / thaw cycle.
Storage buffer	pH: 7.00 Preservative: 0.025% Proclin 300 Constituents: 79% PBS, 20% Glycerol (glycerin, glycerine)
Purity	Immunogen affinity purified
Clonality	Polyclonal
Isotype	IgG

Applications

The Abpromise guarantee

Our **Abpromise guarantee** covers the use of ab137590 in the following tested applications.

The application notes include recommended starting dilutions; optimal dilutions/concentrations should be determined by the end user.

Application	Abreviews	Notes
WB		1/500 - 1/3000. Predicted molecular weight: 105 kDa.
ICC/IF	★☆☆☆☆ (1)	1/100 - 1/1000.

Target

Function

Hydrolyzes lysophospholipids to produce lysophosphatidic acid (LPA) in extracellular fluids. Major substrate is lysophosphatidylcholine. Also can act on sphingosylphosphorylcholine producing sphingosine-1-phosphate, a modulator of cell motility. Can hydrolyze, in vitro, bis-pNPP, to some extent pNP-TMP, and barely ATP. Involved in several motility-related processes such as angiogenesis and neurite outgrowth. Acts as an angiogenic factor by stimulating migration of smooth muscle cells and microtubule formation. Stimulates migration of melanoma cells, probably via a pertussis toxin-sensitive G protein. May have a role in induction of parturition. Possible involvement in cell proliferation and adipose tissue development. Tumor cell motility-stimulating factor.

Tissue specificity

Predominantly expressed in brain, placenta, ovary, and small intestine. Expressed in a number of carcinomas such as hepatocellular and prostate carcinoma, neuroblastoma and non-small-cell lung cancer. Expressed in body fluids such as plasma, cerebral spinal fluid (CSF), saliva, follicular and amniotic fluids. Not detected in leukocytes. Isoform 1 is more highly expressed in peripheral tissues than in the central nervous system (CNS). Adipocytes only express isoform 1. Isoform 3 is more highly expressed in the brain than in peripheral tissues.

Sequence similarities

Belongs to the nucleotide pyrophosphatase/phosphodiesterase family.
Contains 2 SMB (somatomedin-B) domains.

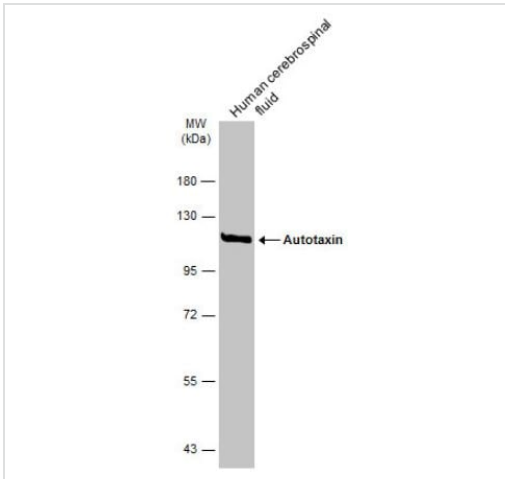
Post-translational modifications

N-glycosylation, but not furin-cleavage, plays a critical role on secretion and on lysoPLD activity.

Cellular localization

Secreted. Secreted by most body fluids including serum and CSF. Also by adipocytes and numerous cancer cells.

Images

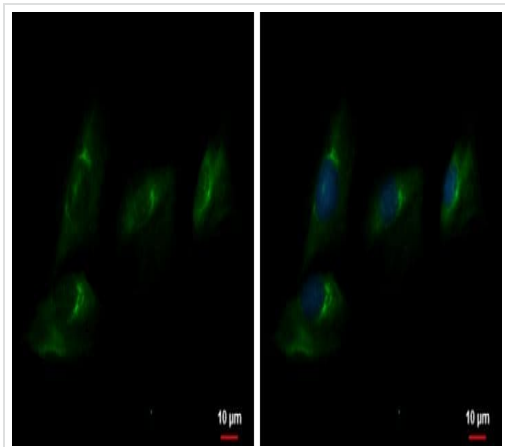


Western blot - Anti-ENPP2/ATX antibody (ab137590)

Anti-ENPP2/ATX antibody (ab137590) at 1/1000 dilution + Human Cerebrospinal Fluid at 30 µg

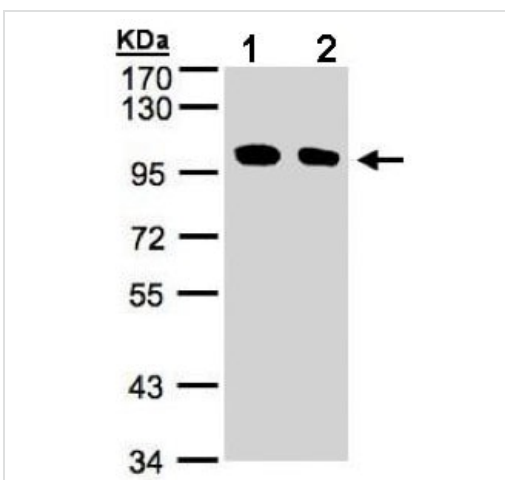
Predicted band size: 105 kDa

7.5% SDS-PAGE



Immunocytochemistry/ Immunofluorescence - Anti-ENPP2/ATX antibody (ab137590)

SK-N-SH cells stained for Autotaxin (green) using ab137590 at 1/500 dilution in ICC/IF.



Western blot - Anti-ENPP2/ATX antibody (ab137590)

All lanes : Anti-ENPP2/ATX antibody (ab137590) at 1/500 dilution

Lane 1 : HepG2 whole cell lysate

Lane 2 : MOLT4 whole cell lysate

Lysates/proteins at 30 µg per lane.

Predicted band size: 105 kDa

7.5% SDS PAGE

Please note: All products are "FOR RESEARCH USE ONLY. NOT FOR USE IN DIAGNOSTIC PROCEDURES"

Our Abpromise to you: Quality guaranteed and expert technical support

- Replacement or refund for products not performing as stated on the datasheet
- Valid for 12 months from date of delivery
- Response to your inquiry within 24 hours

- We provide support in Chinese, English, French, German, Japanese and Spanish
- Extensive multi-media technical resources to help you
- We investigate all quality concerns to ensure our products perform to the highest standards

If the product does not perform as described on this datasheet, we will offer a refund or replacement. For full details of the Abpromise, please visit <https://www.abcam.com/abpromise> or contact our technical team.

Terms and conditions

- Guarantee only valid for products bought direct from Abcam or one of our authorized distributors