

Product datasheet

Anti-Enterococcus antibody ab19980

★★★★★ [1 Abreviews](#) [2 References](#) [1 Image](#)

Overview

Product name	Anti-Enterococcus antibody
Description	Rabbit polyclonal to Enterococcus
Host species	Rabbit
Tested applications	Suitable for: IHC-P, ICC/IF
Species reactivity	Reacts with: Enterococcus faecium
Immunogen	Tissue, cells or virus corresponding to Enterococcus. Enterococcus faecium
General notes	<p>The Life Science industry has been in the grips of a reproducibility crisis for a number of years. Abcam is leading the way in addressing this with our range of recombinant monoclonal antibodies and knockout edited cell lines for gold-standard validation. Please check that this product meets your needs before purchasing.</p> <p>If you have any questions, special requirements or concerns, please send us an inquiry and/or contact our Support team ahead of purchase. Recommended alternatives for this product can be found below, along with publications, customer reviews and Q&As</p>

Properties

Form	Liquid
Storage instructions	Shipped at 4°C. Upon delivery aliquot and store at -20°C. Avoid freeze / thaw cycles.
Storage buffer	Preservative: 0.1% Sodium azide Constituent: 0.0268% PBS
	No stabilizing proteins have been added.
Purity	Protein A purified
Purification notes	>95% pure.
Clonality	Polyclonal
Isotype	IgG

Applications

The Abpromise guarantee Our **Abpromise guarantee** covers the use of ab19980 in the following tested applications.

The application notes include recommended starting dilutions; optimal dilutions/concentrations should be determined by the end user.

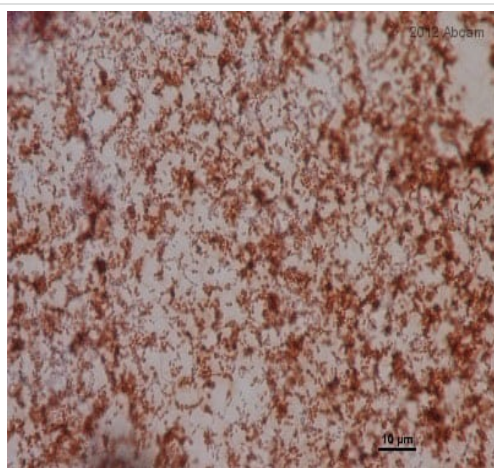
Application	Abreviews	Notes
IHC-P	★★★★★ (1)	Use at an assay dependent concentration.
ICC/IF		1/1000.

Target

Relevance

Enterococci form part of the lactic acid bacteria family and are the third most important bacterial genus in hospital infections, especially *Enterococcus* (E.) *faecium*. In food they can spoil processed meats but they are equally important for ripening and aroma development of certain traditional cheeses and sausages, and are used as human probiotics. However, they possess a broad spectrum antibiotic resistance which has important implications to human health and disease.

Images



Immunohistochemical analysis of porcine plasma-based in vitro grown biofilm, staining *Enterococcus* with ab19980.

Tissue was fixed with paraformaldehyde and blocked with 1% BSA for 30 minutes at room temperature. Samples were incubated with primary antibody (1/10000 in blocking buffer) for 18 hours at 4°C. Staining was detected using DAB.

Immunohistochemistry (Formalin/PFA-fixed paraffin-embedded sections) - Anti-*Enterococcus* antibody (ab19980)

This image is courtesy of an Abreview submitted by Jan Kučera

Please note: All products are "FOR RESEARCH USE ONLY. NOT FOR USE IN DIAGNOSTIC PROCEDURES"

Our Abpromise to you: Quality guaranteed and expert technical support

- Replacement or refund for products not performing as stated on the datasheet
- Valid for 12 months from date of delivery
- Response to your inquiry within 24 hours
- We provide support in Chinese, English, French, German, Japanese and Spanish

- Extensive multi-media technical resources to help you
- We investigate all quality concerns to ensure our products perform to the highest standards

If the product does not perform as described on this datasheet, we will offer a refund or replacement. For full details of the Abpromise, please visit <https://www.abcam.com/abpromise> or contact our technical team.

Terms and conditions

- Guarantee only valid for products bought direct from Abcam or one of our authorized distributors