

## Product datasheet

# Anti-Epac2 antibody ab124189

[2 References](#) [1 Image](#)

### Overview

---

<b>Product name</b>	Anti-Epac2 antibody
<b>Description</b>	Rabbit polyclonal to Epac2
<b>Host species</b>	Rabbit
<b>Specificity</b>	At least two isoforms of Epac2 are known to exist; this antibody will detect only the larger isoform.
<b>Tested applications</b>	<b>Suitable for:</b> WB
<b>Species reactivity</b>	<b>Reacts with:</b> Rat
<b>Immunogen</b>	Synthetic peptide corresponding to 15 amino acids near the N-terminus of Human Epac2 (NP_008954).
<b>General notes</b>	<p>The Life Science industry has been in the grips of a reproducibility crisis for a number of years. Abcam is leading the way in addressing this with our range of recombinant monoclonal antibodies and knockout edited cell lines for gold-standard validation. Please check that this product meets your needs before purchasing.</p> <p>If you have any questions, special requirements or concerns, please send us an inquiry and/or contact our Support team ahead of purchase. Recommended alternatives for this product can be found below, along with publications, customer reviews and Q&amp;As</p>

### Properties

---

<b>Form</b>	Liquid
<b>Storage instructions</b>	Shipped at 4°C. Store at +4°C short term (1-2 weeks). Upon delivery aliquot. Store at -20°C long term.
<b>Storage buffer</b>	pH: 7.2 Preservative: 0.02% Sodium azide Constituent: 99% PBS
<b>Purity</b>	Immunogen affinity purified
<b>Clonality</b>	Polyclonal
<b>Isotype</b>	IgG

### Applications

---

## The Abpromise guarantee

Our **Abpromise guarantee** covers the use of ab124189 in the following tested applications.

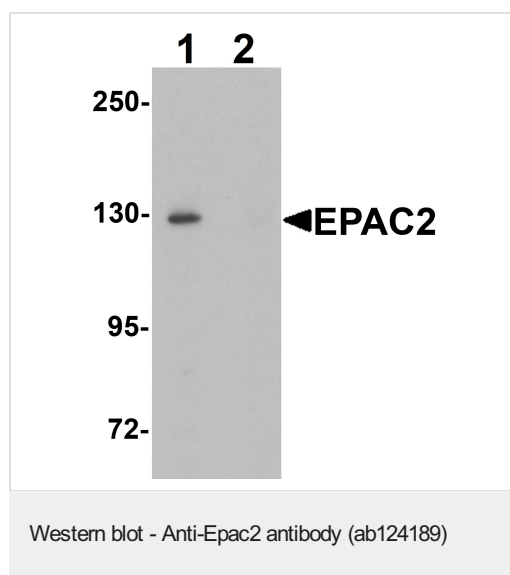
The application notes include recommended starting dilutions; optimal dilutions/concentrations should be determined by the end user.

Application	Abreviews	Notes
WB		Use a concentration of 1 - 2 µg/ml. Predicted molecular weight: 116 kDa.

## Target

<b>Function</b>	Guanine nucleotide exchange factor (GEF) for RAP1A, RAP1B and RAP2A small GTPases that is activated by binding cAMP. Seems not to activate RAB3A. Involved in cAMP-dependent, PKA-independent exocytosis through interaction with RIMS2.
<b>Tissue specificity</b>	Predominantly expressed in brain and adrenal gland. Isoform 2 is expressed in liver. Isoform 1 is expressed in liver at very low levels.
<b>Sequence similarities</b>	Contains 2 cyclic nucleotide-binding domains. Contains 1 DEP domain. Contains 1 N-terminal Ras-GEF domain. Contains 1 Ras-GEF domain.
<b>Domain</b>	The N-terminal nucleotide phosphate binding region cAMP 1 has a much lower affinity for cAMP as compared to cAMP 2. The DEP domain is involved in membrane localization independent from regulation by cAMP.
<b>Cellular localization</b>	Cytoplasm. Membrane.

## Images



**All lanes :** Anti-Epac2 antibody (ab124189) at 1 µg/ml

**Lane 1 :** Rat liver tissue lysate

**Lane 2 :** Rat liver tissue lysate with blocking peptide

Lysates/proteins at 15 µg per lane.

**Predicted band size:** 116 kDa

**Please note:** All products are "FOR RESEARCH USE ONLY. NOT FOR USE IN DIAGNOSTIC PROCEDURES"

**Our Abpromise to you: Quality guaranteed and expert technical support**

- Replacement or refund for products not performing as stated on the datasheet
- Valid for 12 months from date of delivery
- Response to your inquiry within 24 hours
  
- We provide support in Chinese, English, French, German, Japanese and Spanish
- Extensive multi-media technical resources to help you
- We investigate all quality concerns to ensure our products perform to the highest standards

If the product does not perform as described on this datasheet, we will offer a refund or replacement. For full details of the Abpromise, please visit <https://www.abcam.com/abpromise> or contact our technical team.

### **Terms and conditions**

---

- Guarantee only valid for products bought direct from Abcam or one of our authorized distributors