


Product datasheet

Anti-Eph receptor A6 antibody ab113239

3 Images

Overview

Product name	Anti-Eph receptor A6 antibody
Description	Rabbit polyclonal to Eph receptor A6
Host species	Rabbit
Tested applications	Suitable for: IHC-P, ICC/IF
Species reactivity	Reacts with: Human, African green monkey Predicted to work with: Mouse, Rat 
Immunogen	Synthetic peptide conjugated to KLH, from the C terminal region of Human Eph receptor A6.
Positive control	Human Brain cerebellum and Testis tissues; COS7 cells.
General notes	<p>The Life Science industry has been in the grips of a reproducibility crisis for a number of years. Abcam is leading the way in addressing this with our range of recombinant monoclonal antibodies and knockout edited cell lines for gold-standard validation. Please check that this product meets your needs before purchasing.</p> <p>If you have any questions, special requirements or concerns, please send us an inquiry and/or contact our Support team ahead of purchase. Recommended alternatives for this product can be found below, along with publications, customer reviews and Q&As</p>

Properties

Form	Liquid
Storage instructions	Shipped at 4°C. Store at -20°C. Stable for 12 months at -20°C.
Storage buffer	pH: 7.40 Preservative: 0.02% Sodium azide Constituents: 49% PBS, 0.88% Sodium chloride, 50% Glycerol (glycerin, glycerine)
	PBS contains no Mg ²⁺ or Ca ²⁺
Purity	Protein A purified
Clonality	Polyclonal
Isotype	IgG

Applications

The Abpromise guarantee

Our **Abpromise guarantee** covers the use of ab113239 in the following tested applications.

The application notes include recommended starting dilutions; optimal dilutions/concentrations should be determined by the end user.

Application	Abreviews	Notes
IHC-P		Use a concentration of 10 µg/ml.
ICC/IF		1/100 - 1/500.

Target

Function

Receptor for members of the ephrin-A family.

Tissue specificity

Expressed in brain and testis.

Sequence similarities

Belongs to the protein kinase superfamily. Tyr protein kinase family. Ephrin receptor subfamily.

Contains 2 fibronectin type-III domains.

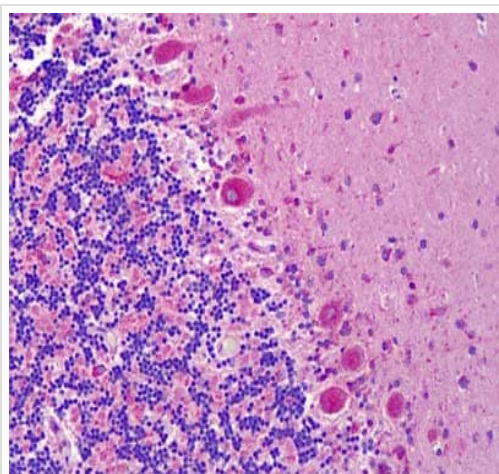
Contains 1 protein kinase domain.

Contains 1 SAM (sterile alpha motif) domain.

Cellular localization

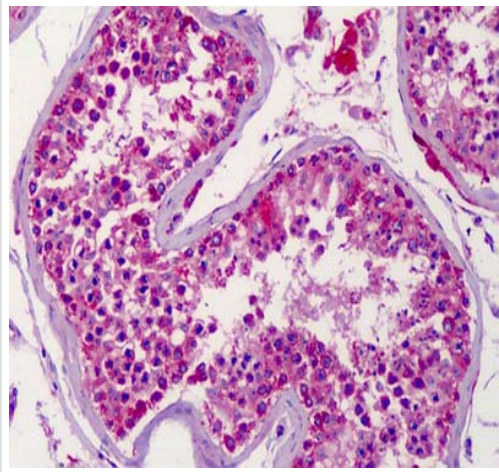
Membrane.

Images



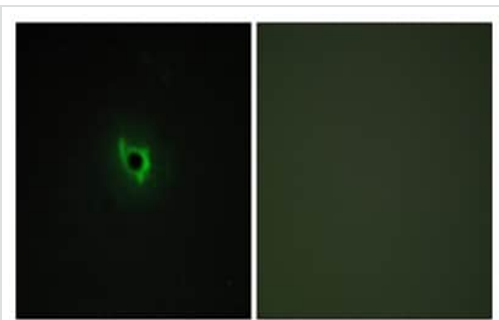
ab113239, at 10 µg/ml, staining Eph receptor A6 in Formalin-fixed, Paraffin-embedded Human Brain cerebellum tissue by Immunohistochemistry.

Immunohistochemistry (Formalin/PFA-fixed paraffin-embedded sections) - Anti-Eph receptor A6 antibody (ab113239)



ab113239, at 10 µg/ml, staining Eph receptor A6 in Formalin-fixed, Paraffin-embedded Human Testis tissue by Immunohistochemistry.

Immunohistochemistry (Formalin/PFA-fixed paraffin-embedded sections) - Anti-Eph receptor A6 antibody (ab113239)



ab113239, at 1/100 dilution, staining Eph receptor A6 in COS7 cells by Immunofluorescence. The image on the right has been treated with the synthesized peptide.

Immunocytochemistry/ Immunofluorescence - Anti-Eph receptor A6 antibody (ab113239)

Please note: All products are "FOR RESEARCH USE ONLY. NOT FOR USE IN DIAGNOSTIC PROCEDURES"

Our Abpromise to you: Quality guaranteed and expert technical support

- Replacement or refund for products not performing as stated on the datasheet
- Valid for 12 months from date of delivery
- Response to your inquiry within 24 hours
- We provide support in Chinese, English, French, German, Japanese and Spanish
- Extensive multi-media technical resources to help you

- We investigate all quality concerns to ensure our products perform to the highest standards

If the product does not perform as described on this datasheet, we will offer a refund or replacement. For full details of the Abpromise, please visit <https://www.abcam.com/abpromise> or contact our technical team.

Terms and conditions

- Guarantee only valid for products bought direct from Abcam or one of our authorized distributors