



### Anti-Ephrin A2 antibody [OTI3E3] ab123877

4 Images

#### Overview

<b>Product name</b>	Anti-Ephrin A2 antibody [OTI3E3]
<b>Description</b>	Mouse monoclonal [OTI3E3] to Ephrin A2
<b>Host species</b>	Mouse
<b>Tested applications</b>	<b>Suitable for:</b> Flow Cyt (Intra), WB, IHC-P, ICC/IF
<b>Species reactivity</b>	<b>Reacts with:</b> Human, African green monkey
<b>Immunogen</b>	<p>Recombinant full length protein corresponding to Human Ephrin A2 aa 1-213. Produced in HEK293T cells (NP_001396).</p> <p>Sequence:</p> <p>MAPAQRPLLPLLLLLPLPPPPFARAEDAARANS DRYAVY  WNRSNPRFHA  GAGDDGGGYTVEVSINDYLDIYCPHYGAPLPPAERMEHYV  LYMVNGEGHA  SCDHRQRGFKRWE CNRPAAPGGPLKFSEKFQLFTPFSL  GFEFRPGHEYYY  ISATPPNAVDRPCLRLKVYVRPTNETLYEAPEPIFTSNNSC  SSPGGCRLF LSTIPVLWTL LGS</p> <p>Database link: <a href="#">O43921</a></p> <p> <a href="#">Run BLAST with</a>  <a href="#">Run BLAST with</a></p>
<b>Positive control</b>	WB: HEK293T cells transfected pCMV6-ENTRY Ephrin A2 cDNA. IHC-P: Human endometrium adenocarcinoma tissue. ICC/IF: COS7 cells transiently transfected by pCMV6-ENTRY Ephrin A2. Flow Cyt (Intra): Jurkat cells.
<b>General notes</b>	<p>The clone number has been updated from 3E3 to OTI3E3, both clone numbers name the same clone.</p> <p>The Life Science industry has been in the grips of a reproducibility crisis for a number of years. Abcam is leading the way in addressing this with our range of recombinant monoclonal antibodies and knockout edited cell lines for gold-standard validation. Please check that this product meets your needs before purchasing.</p> <p>If you have any questions, special requirements or concerns, please send us an inquiry and/or contact our Support team ahead of purchase. Recommended alternatives for this product can be found below, along with publications, customer reviews and Q&amp;As</p>

## Properties

Form	Liquid
Storage instructions	Shipped at 4°C. Store at +4°C short term (1-2 weeks). Upon delivery aliquot. Store at -20°C long term. Avoid freeze / thaw cycle.
Storage buffer	pH: 7.30 Preservative: 0.02% Sodium azide Constituents: 1% BSA, 50% Glycerol, PBS
Purity	Affinity purified
Purification notes	Purified from cell culture supernatant by affinity chromatography
Clonality	Monoclonal
Clone number	OT13E3
Isotype	IgG2b

## Applications

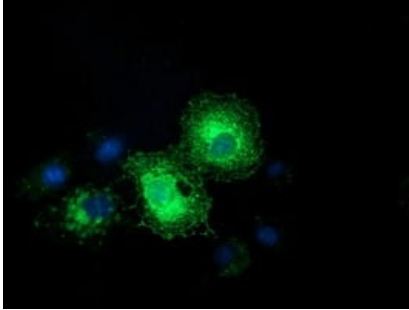
**The Abpromise guarantee** Our **Abpromise guarantee** covers the use of ab123877 in the following tested applications. The application notes include recommended starting dilutions; optimal dilutions/concentrations should be determined by the end user.

Application	Abreviews	Notes
Flow Cyt (Intra)		1/100. <b>ab170192</b> - Mouse monoclonal IgG2b, is suitable for use as an isotype control with this antibody.
WB		1/2000. Predicted molecular weight: 24 kDa.
IHC-P		1/150.
ICC/IF		1/100.

## Target

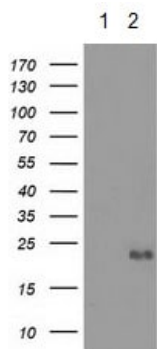
Sequence similarities	Belongs to the ephrin family.
Cellular localization	Cell membrane.

## Images



Immunocytochemistry/ Immunofluorescence - Anti-Ephrin A2 antibody [OTI3E3] (ab123877)

COS-7 (African green monkey kidney fibroblast-like cell line) cells transiently transfected by pCMV6-ENTRY Ephrin A2, stained for Ephrin A2 (Green) using ab123877 at 1/100 dilution in ICC/IF.



Western blot - Anti-Ephrin A2 antibody [OTI3E3] (ab123877)

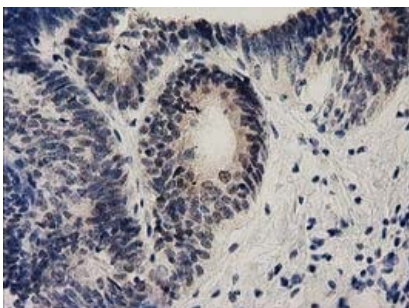
**All lanes :** Anti-Ephrin A2 antibody [OTI3E3] (ab123877) at 1/2000 dilution

**Lane 1 :** HEK-293T (human epithelial cell line from embryonic kidney transformed with large T antigen) cells transfected with pCMV6-ENTRY control cDNA

**Lane 2 :** HEK-293T cells transfected with pCMV6-ENTRY Ephrin A2 cDNA

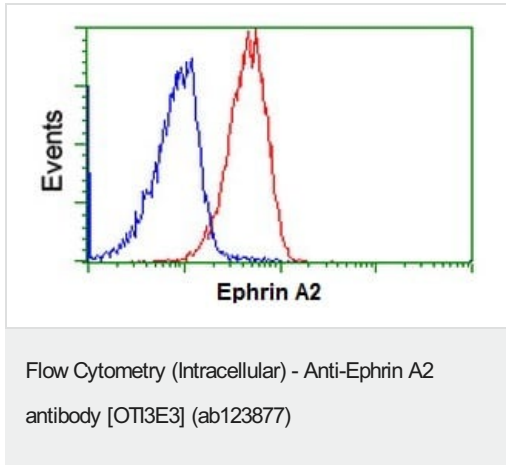
Lysates/proteins at 5 µg per lane.

**Predicted band size:** 24 kDa



Immunohistochemistry (Formalin/PFA-fixed paraffin-embedded sections) - Anti-Ephrin A2 antibody [OTI3E3] (ab123877)

Paraffin-embedded human endometrium tissue stained for Ephrin A2 using ab123877 at 1/100 dilution in immunohistochemical analysis.



ab123877 at 1/100 dilution staining Ephrin-A2 in Jurkat cells by Flow Cytometry (Intracellular) (Red) compared to a nonspecific negative control antibody (Blue).

**Please note:** All products are "FOR RESEARCH USE ONLY. NOT FOR USE IN DIAGNOSTIC PROCEDURES"

### Our Abpromise to you: Quality guaranteed and expert technical support

---

- Replacement or refund for products not performing as stated on the datasheet
- Valid for 12 months from date of delivery
- Response to your inquiry within 24 hours
- We provide support in Chinese, English, French, German, Japanese and Spanish
- Extensive multi-media technical resources to help you
- We investigate all quality concerns to ensure our products perform to the highest standards

If the product does not perform as described on this datasheet, we will offer a refund or replacement. For full details of the Abpromise, please visit <https://www.abcam.com/abpromise> or contact our technical team.

### Terms and conditions

---

- Guarantee only valid for products bought direct from Abcam or one of our authorized distributors