


## Product datasheet

# Anti-Ephrin B3 antibody ab101699

[1 Abreviews](#) [4 References](#) [1 Image](#)

### Overview

---

<b>Product name</b>	Anti-Ephrin B3 antibody
<b>Description</b>	Rabbit polyclonal to Ephrin B3
<b>Host species</b>	Rabbit
<b>Specificity</b>	From Jan 2024, QC testing of replenishment batches of this polyclonal changed. All tested and expected application and reactive species combinations are still covered by our Abcam product promise. However, we no longer test all applications. For more information on a specific batch, please contact our Scientific Support who will be happy to help.
<b>Tested applications</b>	<b>Suitable for:</b> WB, IHC <b>Unsuitable for:</b> ICC/IF
<b>Species reactivity</b>	<b>Reacts with:</b> Mouse, Rat, Human <b>Predicted to work with:</b> Horse, Cow, Cat, Dog, Pig, Macaque monkey 
<b>Immunogen</b>	Synthetic peptide corresponding to Human Ephrin B3 aa 100-200 conjugated to keyhole limpet haemocyanin. (Peptide available as <a href="#">ab113310</a> )
<b>General notes</b>	<p>The Life Science industry has been in the grips of a reproducibility crisis for a number of years. Abcam is leading the way in addressing this with our range of recombinant monoclonal antibodies and knockout edited cell lines for gold-standard validation. Please check that this product meets your needs before purchasing.</p> <p>If you have any questions, special requirements or concerns, please send us an inquiry and/or contact our Support team ahead of purchase. Recommended alternatives for this product can be found below, along with publications, customer reviews and Q&amp;As</p>

### Properties

---

<b>Form</b>	Liquid
<b>Storage instructions</b>	Shipped at 4°C. Store at +4°C short term (1-2 weeks). Upon delivery aliquot. Store at -20°C or -80°C. Avoid freeze / thaw cycle.
<b>Storage buffer</b>	pH: 7.40 Preservative: 0.02% Sodium azide Constituent: PBS

Batches of this product that have a concentration < 1mg/ml may have BSA added as a stabilising

agent. If you would like information about the formulation of a specific lot, please contact our scientific support team who will be happy to help.

<b>Purity</b>	Immunogen affinity purified
<b>Clonality</b>	Polyclonal
<b>Isotype</b>	IgG

## Applications

**The Abpromise guarantee** Our **Abpromise guarantee** covers the use of ab101699 in the following tested applications. The application notes include recommended starting dilutions; optimal dilutions/concentrations should be determined by the end user.

Application	Abreviews	Notes
<b>WB</b>		Use a concentration of 1 µg/ml. Detects a band of approximately 45 kDa (predicted molecular weight: 36 kDa).
<b>IHC</b>		Use at an assay dependent concentration. PubMed: 25309991

**Application notes** Is unsuitable for ICC/IF.

## Target

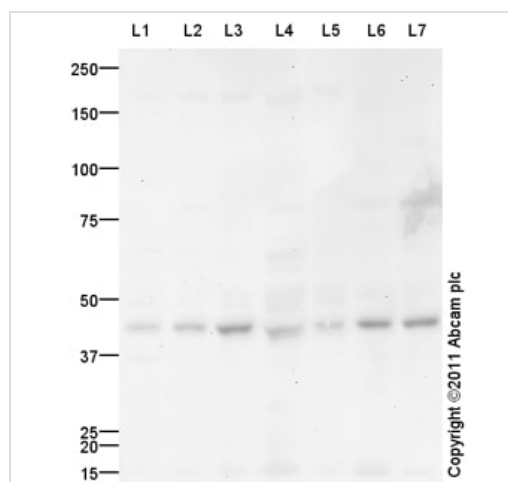
**Function** May play a pivotal role in forebrain function. Binds to, and induce the collapse of, commissural axons/growth cones in vitro. May play a role in constraining the orientation of longitudinally projecting axons.

**Tissue specificity** Highly expressed in brain; expressed in embryonic floor plate, roof plate and hindbrain segments.

**Sequence similarities** Belongs to the ephrin family.

**Cellular localization** Membrane.

## Images



Western blot - Anti-Ephrin B3 antibody (ab101699)

**All lanes** : Anti-Ephrin B3 antibody (ab101699) at 1 µg/ml

**Lane 1** : Human brain tissue lysate - total protein (**ab29466**)

**Lane 2** : Brain (Mouse) Tissue Lysate

**Lane 3** : Brain (Rat) Tissue Lysate

**Lane 4** : Forebrain (Mouse) Tissue Lysate

**Lane 5** : Rat Forebrain

**Lane 6** : E10 Mouse Embryo Brain Tissue Lysate

**Lane 7** : E14 Mouse Embryo Brain Tissue Lysate

Lysates/proteins at 10 µg per lane.

## Secondary

**All lanes** : Goat Anti-Rabbit IgG H&L (HRP) preadsorbed  
(**ab97080**) at 1/5000 dilution

Developed using the ECL technique.

Performed under reducing conditions.

**Predicted band size:** 36 kDa

**Observed band size:** 45 kDa

**Exposure time:** 90 seconds

Ephrin B3 contains a potential glycosylation site (SwissProt) which may explain its migration at a higher molecular weight than predicted.

**Please note:** All products are "FOR RESEARCH USE ONLY. NOT FOR USE IN DIAGNOSTIC PROCEDURES"

#### **Our Abpromise to you: Quality guaranteed and expert technical support**

---

- Replacement or refund for products not performing as stated on the datasheet
- Valid for 12 months from date of delivery
- Response to your inquiry within 24 hours
  
- We provide support in Chinese, English, French, German, Japanese and Spanish
- Extensive multi-media technical resources to help you
- We investigate all quality concerns to ensure our products perform to the highest standards

If the product does not perform as described on this datasheet, we will offer a refund or replacement. For full details of the Abpromise, please visit <https://www.abcam.com/abpromise> or contact our technical team.

#### **Terms and conditions**

---

- Guarantee only valid for products bought direct from Abcam or one of our authorized distributors