

Product datasheet

Anti-EPPIN antibody ab185699

3 Images

Overview

Product name	Anti-EPPIN antibody
Description	Rabbit polyclonal to EPPIN
Host species	Rabbit
Tested applications	Suitable for: WB, IHC-P, ICC/IF
Species reactivity	Reacts with: Mouse, Human
Immunogen	Recombinant full length protein corresponding to Human EPPIN aa 22-133. Mature form. Database link: O95925
Positive control	THP1, Mouse liver and Mouse testis lysates
General notes	<p>The Life Science industry has been in the grips of a reproducibility crisis for a number of years. Abcam is leading the way in addressing this with our range of recombinant monoclonal antibodies and knockout edited cell lines for gold-standard validation. Please check that this product meets your needs before purchasing.</p> <p>If you have any questions, special requirements or concerns, please send us an inquiry and/or contact our Support team ahead of purchase. Recommended alternatives for this product can be found below, along with publications, customer reviews and Q&As</p>

Properties

Form	Liquid
Storage instructions	Shipped at 4°C. Store at +4°C short term (1-2 weeks). Upon delivery aliquot. Store at -20°C long term. Avoid freeze / thaw cycle.
Storage buffer	pH: 7.30 Preservative: 0.02% Sodium azide Constituents: 50% Glycerol, 49% PBS
Purity	Immunogen affinity purified
Clonality	Polyclonal
Isotype	IgG

Applications

The Abpromise guarantee

Our **Abpromise guarantee** covers the use of ab185699 in the following tested applications.

The application notes include recommended starting dilutions; optimal dilutions/concentrations should be determined by the end user.

Application	Abreviews	Notes
WB		1/500 - 1/2000. Predicted molecular weight: 15 kDa.
IHC-P		1/50 - 1/200.
ICC/IF		Use at an assay dependent concentration.

Target**Function**

Serine protease inhibitor that plays an essential role in male reproduction and fertility. Modulates the hydrolysis of SEMG1 by KLK3/PSA (a serine protease), provides antimicrobial protection for spermatozoa in the ejaculate coagulum, and binds SEMG1 thereby inhibiting sperm motility.

Tissue specificity

In testis, expressed and secreted by Sertoli cells, appearing on the surface of testicular and ejaculate spermatozoa. Expressed in the spermatogonia and the earliest preleptotene spermatocytes. In the epididymis, is expressed and secreted by epithelial cells and covers the surface of epididymal spermatozoa and ciliated epithelial cells (at protein level). Expressed specifically in epididymis and testis. Isoform 2 is expressed only in the epididymis. Weak expression is detected in myoid cells as well as spermatogenic cells.

Sequence similarities

Contains 1 BPTI/Kunitz inhibitor domain.
Contains 1 WAP domain.

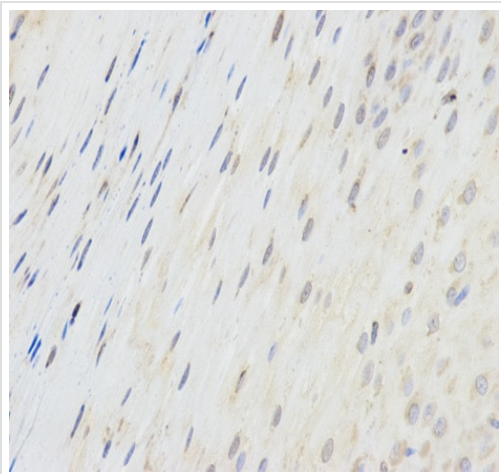
Domain

The BPTI/Kunitz inhibitor domain is required for elastase inhibitory activity. BPTI/Kunitz inhibitor and WAP domains are involved in the protein antibacterial activity.

Cellular localization

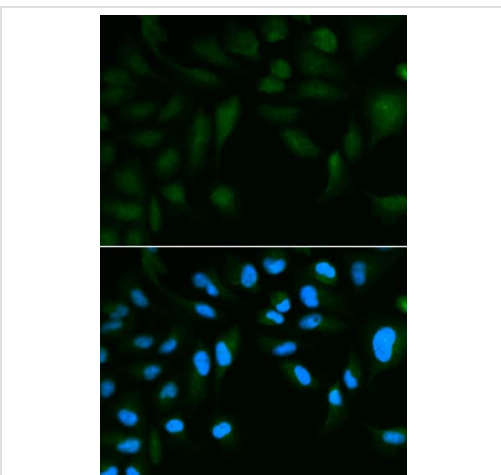
Secreted. Cell surface. Bound to the surface of testicular and on the head and tail of ejaculate spermatozoa.

Images



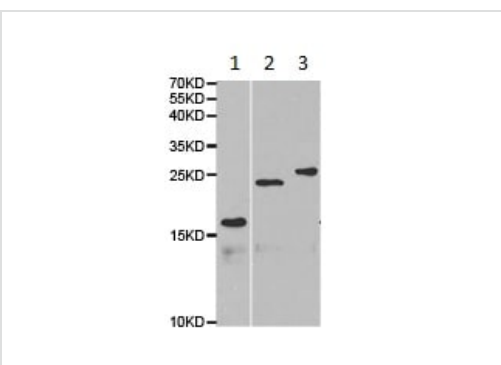
Immunohistochemistry (Formalin/PFA-fixed paraffin-embedded sections) - Anti-EPPIN antibody (ab185699)

Immunohistochemistry (Formalin/PFA-fixed paraffin-embedded sections) analysis of human esophagus tissue labelling EPPIN with ab185699 at 1/200. Magnification: 400x.



Immunocytochemistry/ Immunofluorescence - Anti-EPPIN antibody (ab185699)

Immunocytochemistry/Immunofluorescence analysis of HepG2 cells using ab185699. Blue DAPI for nuclear staining.



Western blot - Anti-EPPIN antibody (ab185699)

All lanes : Anti-EPPIN antibody (ab185699) at 1/500 dilution

Lane 1 : THP1 cell lysate

Lane 2 : Mouse liver lysate

Lane 3 : Mouse testis lysate

Predicted band size: 15 kDa

Please note: All products are "FOR RESEARCH USE ONLY. NOT FOR USE IN DIAGNOSTIC PROCEDURES"

Our Abpromise to you: Quality guaranteed and expert technical support

- Replacement or refund for products not performing as stated on the datasheet
- Valid for 12 months from date of delivery
- Response to your inquiry within 24 hours

- We provide support in Chinese, English, French, German, Japanese and Spanish
- Extensive multi-media technical resources to help you
- We investigate all quality concerns to ensure our products perform to the highest standards

If the product does not perform as described on this datasheet, we will offer a refund or replacement. For full details of the Abpromise, please visit <https://www.abcam.com/abpromise> or contact our technical team.

Terms and conditions

- Guarantee only valid for products bought direct from Abcam or one of our authorized distributors