


## Product datasheet

### Anti-EPS15R antibody [EP1146Y] αb76004

Recombinant RabMAb

[3 References](#) [2 Images](#)

#### Overview

Product name	Anti-EPS15R antibody [EP1146Y]
Description	Rabbit monoclonal [EP1146Y] to EPS15R
Host species	Rabbit
Tested applications	<b>Suitable for:</b> WB <b>Unsuitable for:</b> Flow Cyt, ICC/IF, IHC-P or IP
Species reactivity	<b>Reacts with:</b> Human <b>Predicted to work with:</b> Mouse, Rat 
Immunogen	Synthetic peptide within Human EPS15R aa 1-100 (N terminal). The exact sequence is proprietary. Database link: <a href="#">Q9UBC2</a>
Positive control	HeLa, 293T and SHSY5Y cell lysates; A431 cells.
General notes	This product is a recombinant monoclonal antibody, which offers several advantages including: <ul style="list-style-type: none"> <li>- High batch-to-batch consistency and reproducibility</li> <li>- Improved sensitivity and specificity</li> <li>- Long-term security of supply</li> <li>- Animal-free production</li> </ul> For more information <a href="#">see here</a> . Our RabMAb <sup>®</sup> technology is a patented hybridoma-based technology for making rabbit monoclonal antibodies. For details on our patents, please refer to <a href="#">RabMAb<sup>®</sup> patents</a> .

#### Properties

Form	Liquid
Storage instructions	Shipped at 4°C. Upon delivery aliquot and store at -20°C. Avoid freeze / thaw cycles.
Storage buffer	pH: 7.20 Preservative: 0.05% Sodium azide Constituents: 0.1% BSA, 40% Glycerol (glycerin, glycerine), 9.85% Tris glycine, 50% Tissue culture supernatant
Purity	Protein A purified
Clonality	Monoclonal

**Clone number** EP1146Y

**Isotype** IgG

## Applications

**The Abpromise guarantee** Our **Abpromise guarantee** covers the use of ab76004 in the following tested applications. The application notes include recommended starting dilutions; optimal dilutions/concentrations should be determined by the end user.

Application	Abreviews	Notes
WB		1/10000 - 1/20000. Predicted molecular weight: 94 kDa.

**Application notes** Is unsuitable for Flow Cyt, ICC/IF, IHC-P or IP.

## Target

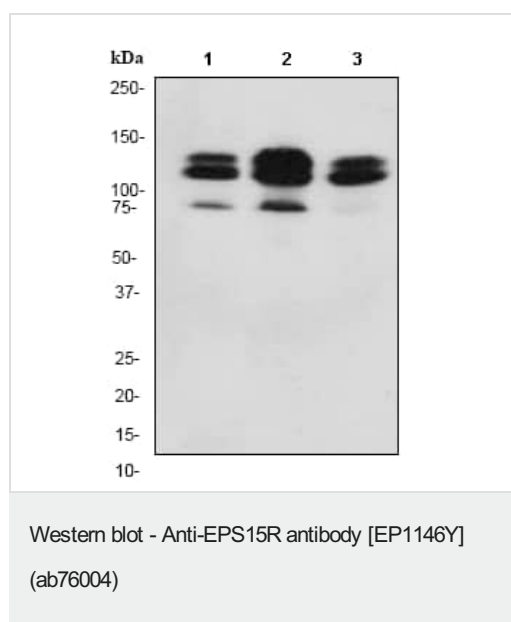
**Function** Seems to be a constitutive component of clathrin-coated pits that is required for receptor-mediated endocytosis. Involved in endocytosis of integrin beta-1 (ITGB1) and transferrin receptor (TFR); internalization of ITGB1 as DAB2-dependent cargo but not TFR seems to require association with DAB2.

**Sequence similarities** Contains 1 EF-hand domain.  
Contains 3 EH domains.

**Post-translational modifications** Phosphorylated on tyrosine residues by EGFR.

**Cellular localization** Cell membrane. Nucleus. Membrane > coated pit. Localized to plasma membrane coated pits.

## Images



**All lanes** : Anti-EPS15R antibody [EP1146Y] (ab76004) at 1/20000 dilution

**Lane 1** : HeLa cell lysates

**Lane 2** : 293T cell lysates

**Lane 3** : SHSY5Y cell lysates

Lysates/proteins at 10 µg per lane.

### Secondary





**All lanes** : goat anti-rabbit HRP at 1/2000 dilution

**Predicted band size:** 94 kDa

**Observed band size:** 108,125,76 kDa

There are three isoforms with MW at 125, 108 and 76 kDa respectively.

Why choose a recombinant antibody?

 <p><b>Research with confidence</b> Consistent and reproducible results</p>	 <p><b>Long-term and scalable supply</b> Recombinant technology</p>
 <p><b>Success from the first experiment</b> Confirmed specificity</p>	 <p><b>Ethical standards compliant</b> Animal-free production</p>

Anti-EPS15R antibody [EP1146Y] (ab76004)

**Please note:** All products are "FOR RESEARCH USE ONLY. NOT FOR USE IN DIAGNOSTIC PROCEDURES"

### Our Abpromise to you: Quality guaranteed and expert technical support

---

- Replacement or refund for products not performing as stated on the datasheet
- Valid for 12 months from date of delivery
- Response to your inquiry within 24 hours
- We provide support in Chinese, English, French, German, Japanese and Spanish
- Extensive multi-media technical resources to help you
- We investigate all quality concerns to ensure our products perform to the highest standards

If the product does not perform as described on this datasheet, we will offer a refund or replacement. For full details of the Abpromise, please visit <https://www.abcam.com/abpromise> or contact our technical team.

### Terms and conditions

---

- Guarantee only valid for products bought direct from Abcam or one of our authorized distributors