


Product datasheet

Anti-ERCC1 antibody [SP68] ab225721

Recombinant **RabMAb**

[2 References](#) [15 Images](#)

Overview

Product name	Anti-ERCC1 antibody [SP68]
Description	Rabbit monoclonal [SP68] to ERCC1
Host species	Rabbit
Tested applications	Suitable for: IHC-P
Species reactivity	Reacts with: Mouse, Rat, Human Predicted to work with: Hamster, Cow, Pig 
Immunogen	Recombinant full length protein corresponding to Human ERCC1. Database link: P07992
Positive control	IHC-P: Human lung carcinoma, bladder transitional cell carcinoma, testis, breast ductal carcinoma, colon, colon carcinoma, hepatocellular carcinoma, lung carcinoma, prostate carcinoma, renal cell carcinoma, skin squamous cell carcinoma, Mouse colon, and Rat colon tissue.
General notes	This product is FOR RESEARCH USE ONLY. For commercial use, please contact partnerships@abcam.com.

Properties

Form	Liquid
Storage instructions	Shipped at 4°C. Store at +4°C short term (1-2 weeks). Upon delivery aliquot. Store at -20°C long term. Avoid freeze / thaw cycle.
Storage buffer	pH: 7.60 Preservative: 0.1% Sodium azide Constituents: PBS, 1% BSA
Purity	Protein A/G purified
Purification notes	Purified from TCS by protein A/G.
Clonality	Monoclonal
Clone number	SP68
Isotype	IgG

Applications

The Abpromise guarantee Our **Abpromise guarantee** covers the use of ab225721 in the following tested applications.

The application notes include recommended starting dilutions; optimal dilutions/concentrations should be determined by the end user.

Application	Abreviews	Notes
IHC-P		1/100. Perform heat mediated antigen retrieval with citrate buffer pH 6 before commencing with IHC staining protocol. Primary incubation for 30 minutes at room temperature.

Target

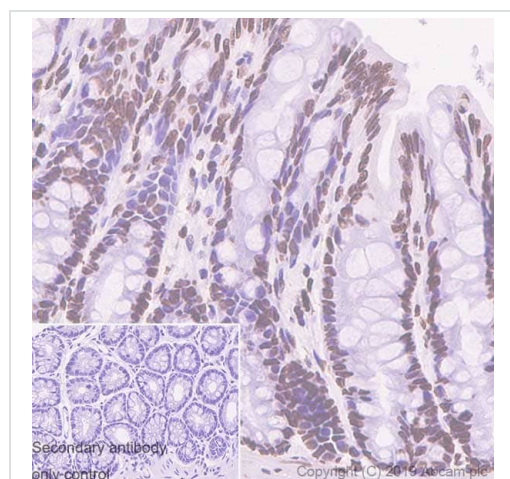
Function Structure-specific DNA repair endonuclease responsible for the 5'-incision during DNA repair.

Involvement in disease Defects in ERCC1 are the cause of cerebro-oculo-facio-skeletal syndrome type 4 (COFS4) [MIM:610758]. COFS is a degenerative autosomal recessive disorder of prenatal onset affecting the brain, eye and spinal cord. After birth, it leads to brain atrophy, hypoplasia of the corpus callosum, hypotonia, cataracts, microcornea, optic atrophy, progressive joint contractures and growth failure. Facial dysmorphism is a constant feature. Abnormalities of the skull, eyes, limbs, heart and kidney also occur.

Sequence similarities Belongs to the ERCC1/RAD10/SWI10 family.

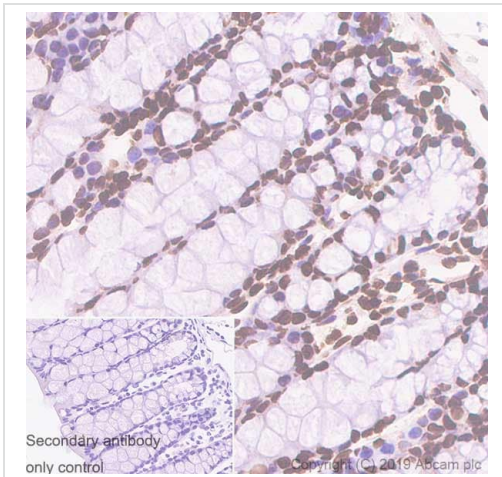
Cellular localization Nucleus.

Images



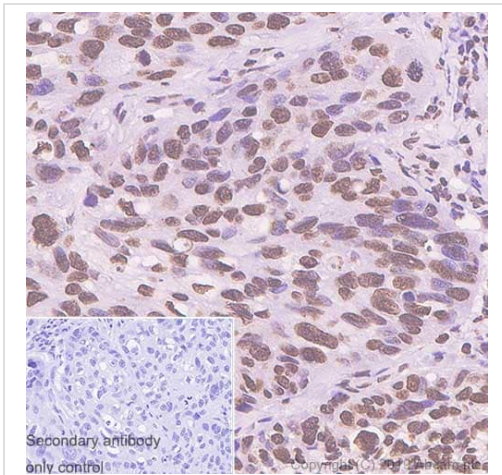
Immunohistochemistry (Formalin/PFA-fixed paraffin-embedded sections) analysis of Rat colon tissue sections labeling ERCC1 with Purified ab225721 at 1/400 dilution (0.132 µg/ml). Heat mediated antigen retrieval was performed Heat mediated antigen retrieval with sodium citrate buffer (pH 6.0, epitope retrieval solution 1) for 20mins. Rabbit specific IHC polymer detection kit HRP/DAB (**ab209101**) was used as the secondary antibody. Negative control: PBS instead of the primary antibody. Hematoxylin was used as a counterstain.

Immunohistochemistry (Formalin/PFA-fixed paraffin-embedded sections) - Anti-ERCC1 antibody [SP68] (ab225721)



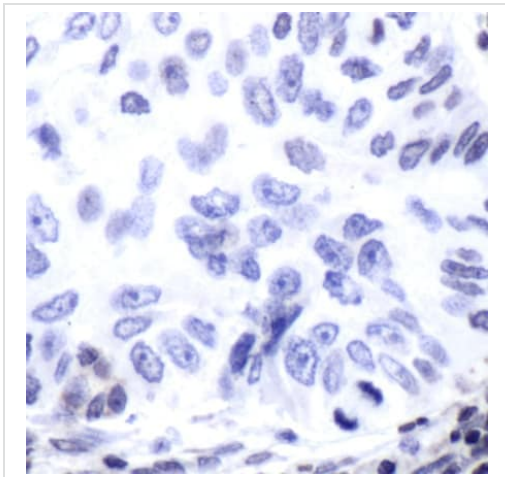
Immunohistochemistry (Formalin/PFA-fixed paraffin-embedded sections) - Anti-ERCC1 antibody [SP68] (ab225721)

Immunohistochemistry (Formalin/PFA-fixed paraffin-embedded sections) analysis of Mouse colon tissue sections labeling ERCC1 with Purified ab225721 at 1/400 dilution (0.132 µg/ml). Heat mediated antigen retrieval was performed Heat mediated antigen retrieval with sodium citrate buffer (pH 6.0, epitope retrieval solution 1) for 20mins. Rabbit specific IHC polymer detection kit HRP/DAB (**ab209101**) was used as the secondary antibody. Negative control: PBS instead of the primary antibody. Hematoxylin was used as a counterstain.



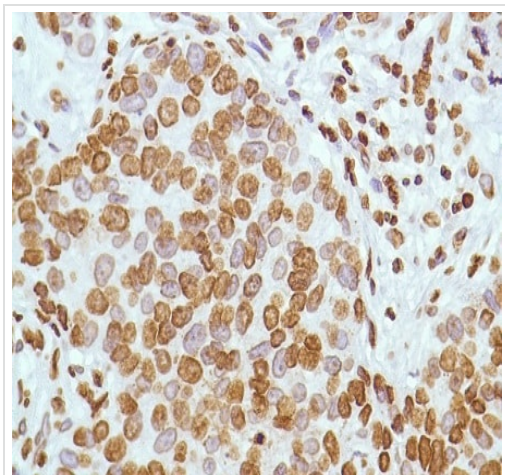
Immunohistochemistry (Formalin/PFA-fixed paraffin-embedded sections) - Anti-ERCC1 antibody [SP68] (ab225721)

Immunohistochemistry (Formalin/PFA-fixed paraffin-embedded sections) analysis of Human lung carcinoma tissue sections labeling ERCC1 with Purified ab225721 at 1/100 dilution (0.53 µg/ml). Heat mediated antigen retrieval was performed Heat mediated antigen retrieval with sodium citrate buffer (pH 6.0, epitope retrieval solution 1) for 20mins. Rabbit specific IHC polymer detection kit HRP/DAB (**ab209101**) was used as the secondary antibody. Negative control: PBS instead of the primary antibody. Hematoxylin was used as a counterstain.



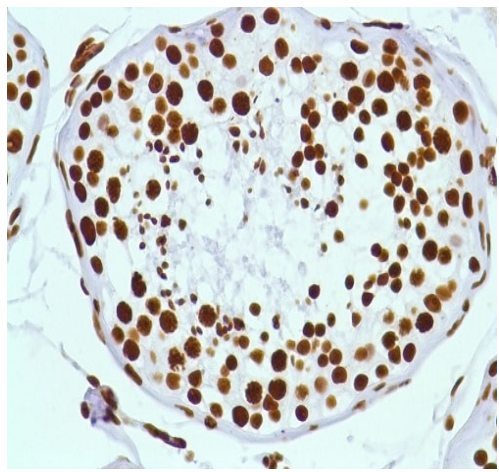
Immunohistochemistry (Formalin/PFA-fixed paraffin-embedded sections) - Anti-ERCC1 antibody [SP68] (ab225721)

Formalin-fixed, paraffin-embedded human lung carcinoma tissue stained for ERCC1 using ab225721 at 1/100 dilution in immunohistochemical analysis.



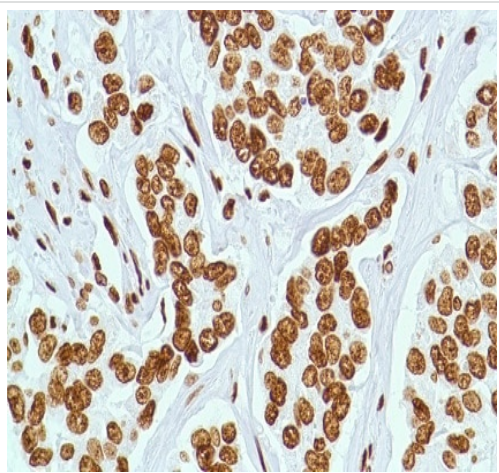
Immunohistochemistry (Formalin/PFA-fixed paraffin-embedded sections) - Anti-ERCC1 antibody [SP68] (ab225721)

Formalin-fixed, paraffin-embedded human bladder transitional cell carcinoma tissue stained for ERCC1 using ab225721 at 1/100 dilution in immunohistochemical analysis.



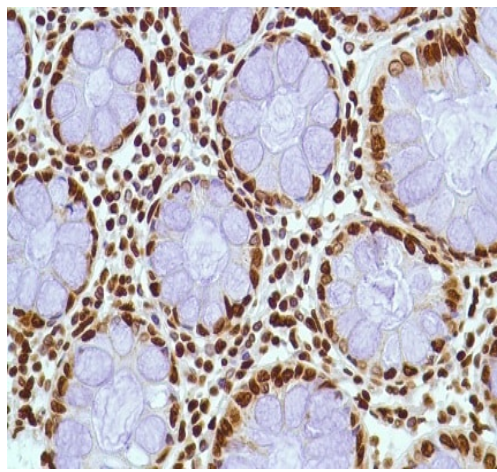
Formalin-fixed, paraffin-embedded human testis tissue stained for ERCC1 using ab225721 at 1/100 dilution in immunohistochemical analysis.

Immunohistochemistry (Formalin/PFA-fixed paraffin-embedded sections) - Anti-ERCC1 antibody [SP68] (ab225721)



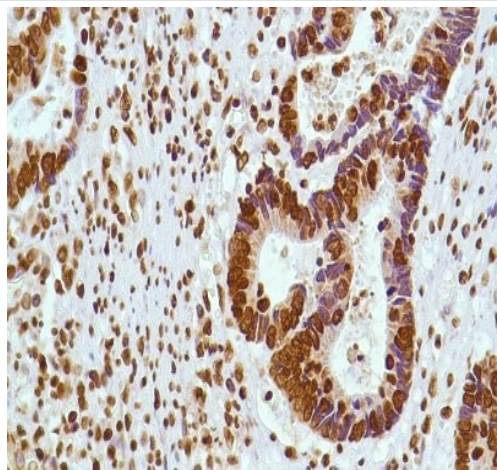
Formalin-fixed, paraffin-embedded human breast ductal carcinoma tissue stained for ERCC1 using ab225721 at 1/100 dilution in immunohistochemical analysis.

Immunohistochemistry (Formalin/PFA-fixed paraffin-embedded sections) - Anti-ERCC1 antibody [SP68] (ab225721)



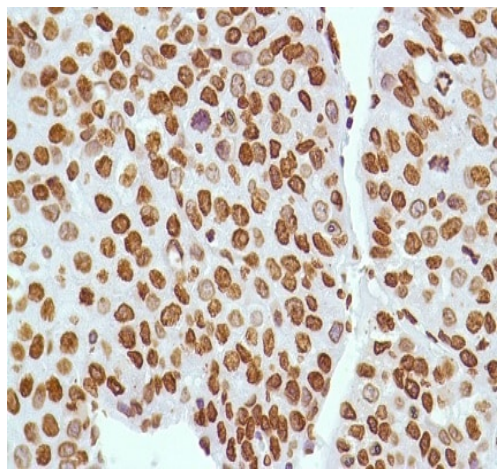
Formalin-fixed, paraffin-embedded human colon tissue stained for ERCC1 using ab225721 at 1/100 dilution in immunohistochemical analysis.

Immunohistochemistry (Formalin/PFA-fixed paraffin-embedded sections) - Anti-ERCC1 antibody [SP68] (ab225721)



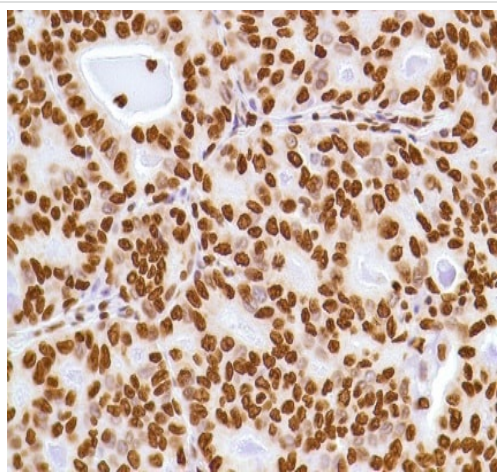
Formalin-fixed, paraffin-embedded human colon adenocarcinoma tissue stained for ERCC1 using ab225721 at 1/100 dilution in immunohistochemical analysis.

Immunohistochemistry (Formalin/PFA-fixed paraffin-embedded sections) - Anti-ERCC1 antibody [SP68] (ab225721)



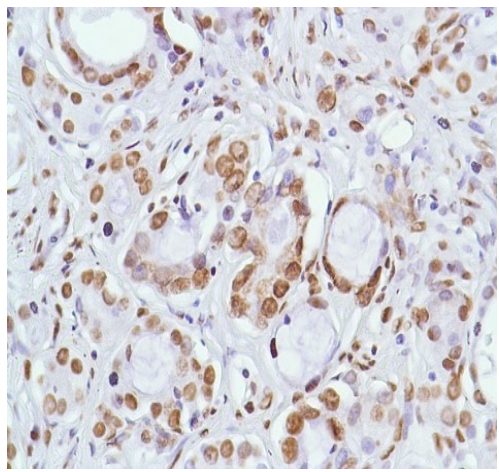
Immunohistochemistry (Formalin/PFA-fixed paraffin-embedded sections) - Anti-ERCC1 antibody [SP68] (ab225721)

Formalin-fixed, paraffin-embedded human hepatocellular carcinoma tissue stained for ERCC1 using ab225721 at 1/100 dilution in immunohistochemical analysis.



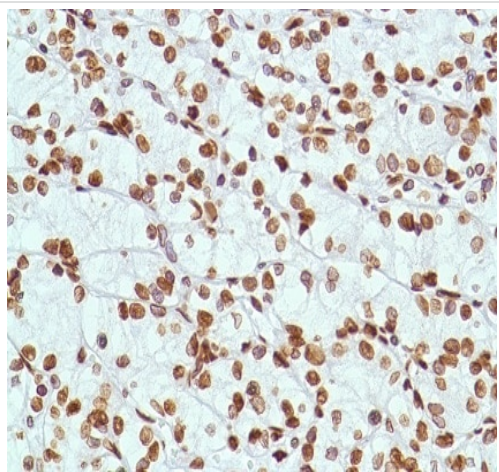
Immunohistochemistry (Formalin/PFA-fixed paraffin-embedded sections) - Anti-ERCC1 antibody [SP68] (ab225721)

Formalin-fixed, paraffin-embedded human lung adenocarcinoma tissue stained for ERCC1 using ab225721 at 1/100 dilution in immunohistochemical analysis.



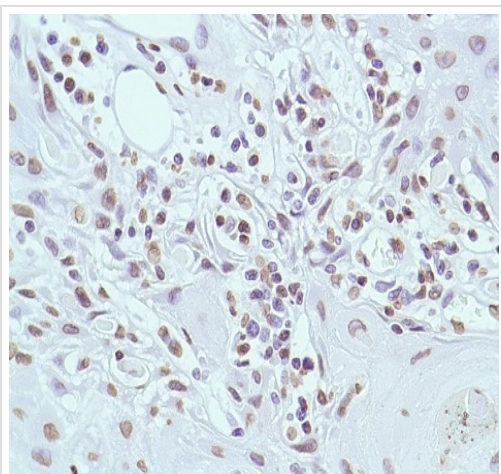
Formalin-fixed, paraffin-embedded human prostate adenocarcinoma tissue stained for ERCC1 using ab225721 at 1/100 dilution in immunohistochemical analysis.

Immunohistochemistry (Formalin/PFA-fixed paraffin-embedded sections) - Anti-ERCC1 antibody [SP68] (ab225721)



Formalin-fixed, paraffin-embedded human renal cell carcinoma tissue stained for ERCC1 using ab225721 at 1/100 dilution in immunohistochemical analysis.





Immunohistochemistry (Formalin/PFA-fixed paraffin-embedded sections) - Anti-ERCC1 antibody [SP68] (ab225721)



Formalin-fixed, paraffin-embedded human skin squamous cell carcinoma tissue stained for ERCC1 using ab225721 at 1/100 dilution in immunohistochemical analysis.

Immunohistochemistry (Formalin/PFA-fixed paraffin-embedded sections) - Anti-ERCC1 antibody [SP68] (ab225721)

Why choose a recombinant antibody?

 Research with confidence Consistent and reproducible results	 Long-term and scalable supply Recombinant technology
 Success from the first experiment Confirmed specificity	 Ethical standards compliant Animal-free production

Anti-ERCC1 antibody [SP68] (ab225721)

Please note: All products are "FOR RESEARCH USE ONLY. NOT FOR USE IN DIAGNOSTIC PROCEDURES"

Our Abpromise to you: Quality guaranteed and expert technical support

- Replacement or refund for products not performing as stated on the datasheet
- Valid for 12 months from date of delivery
- Response to your inquiry within 24 hours
- We provide support in Chinese, English, French, German, Japanese and Spanish
- Extensive multi-media technical resources to help you
- We investigate all quality concerns to ensure our products perform to the highest standards

If the product does not perform as described on this datasheet, we will offer a refund or replacement. For full details of the Abpromise, please visit <https://www.abcam.com/abpromise> or contact our technical team.

Terms and conditions

- Guarantee only valid for products bought direct from Abcam or one of our authorized distributors