


Product datasheet

Anti-ERK1 (phospho T202 + Y204) + ERK2 (phospho T185 + Y187) antibody ab214362

[130 References](#) [3 Images](#)

Overview

Product name	Anti-ERK1 (phospho T202 + Y204) + ERK2 (phospho T185 + Y187) antibody
Description	Rabbit polyclonal to ERK1 (phospho T202 + Y204) + ERK2 (phospho T185 + Y187)
Host species	Rabbit
Tested applications	Suitable for: IHC-P, WB
Species reactivity	Reacts with: Human Predicted to work with: Mouse, Rat, Cow 
Immunogen	Synthetic peptide within Human ERK1 aa 150-250 (phospho T202 + Y204) conjugated to keyhole limpet haemocyanin. The exact immunogen sequence used to generate this antibody is proprietary information. If additional detail on the immunogen is needed to determine the suitability of the antibody for your needs, please contact our Scientific Support team to discuss your requirements. Database link: P27361
Positive control	Human colon carcinoma lysate; Human liver tissue and lung carcinoma tissue.
General notes	<p>The Life Science industry has been in the grips of a reproducibility crisis for a number of years. Abcam is leading the way in addressing this with our range of recombinant monoclonal antibodies and knockout edited cell lines for gold-standard validation. Please check that this product meets your needs before purchasing.</p> <p>If you have any questions, special requirements or concerns, please send us an inquiry and/or contact our Support team ahead of purchase. Recommended alternatives for this product can be found below, along with publications, customer reviews and Q&As</p>

Properties

Form	Liquid
Storage instructions	Shipped at 4°C. Store at +4°C short term (1-2 weeks). Upon delivery aliquot. Store at -20°C long term. Avoid freeze / thaw cycle.
Storage buffer	pH: 7.40 Preservative: 0.02% Proclin 300 Constituents: 50% Glycerol (glycerin, glycerine), 1% BSA, 48.98% TBS, 1X
Purity	Protein A purified

Clonality Polyclonal

Isotype IgG

Applications

The Abpromise guarantee Our **Abpromise guarantee** covers the use of ab214362 in the following tested applications.

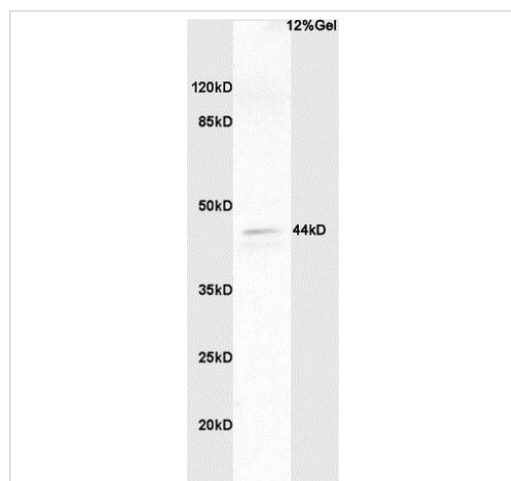
The application notes include recommended starting dilutions; optimal dilutions/concentrations should be determined by the end user.

Application	Abreviews	Notes
IHC-P		1/100 - 1/500. Perform heat mediated antigen retrieval with citrate buffer pH 6 before commencing with IHC staining protocol. When using a fluorescent probe the recommended dilution is 1/50 – 1/200.
WB		1/100 - 1/1000. Detects a band of approximately 44 kDa (predicted molecular weight: 41 kDa).

Target

Cellular localization ERK2: Nucleus.

Images



Western blot - Anti-ERK1 (phospho T202 + Y204) + ERK2 (phospho T185 + Y187) antibody (ab214362)

Anti-ERK1 (phospho T202 + Y204) + ERK2 (phospho T185 + Y187) antibody (ab214362) at 1/200 dilution + Human colon carcinoma lysate

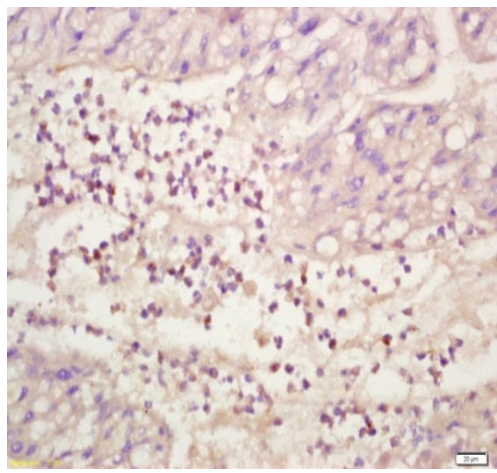
Secondary

Goat anti-rabbit IgG (H+L), HRP at 1/3000 dilution

Predicted band size: 41 kDa

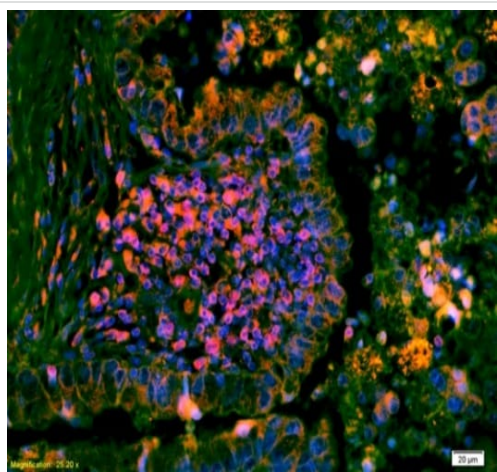
Observed band size: 44 kDa

12% Gel.



Immunohistochemical analysis of formalin-fixed, paraffin-embedded Human liver tissue labeling ERK 1/2 (phospho-Thr202/Tyr204) with ab214362 at 1/200 dilution followed by conjugation to the secondary antibody and DAB staining

Immunohistochemistry (Formalin/PFA-fixed paraffin-embedded sections) - Anti-ERK1 (phospho T202 + Y204) + ERK2 (phospho T185 + Y187) antibody (ab214362)



Immunohistochemical analysis of formalin-fixed, paraffin-embedded Human lung carcinoma tissue labeling ERK 1/2 (phospho-Thr202/Tyr204) with ab214362 at 1/200 dilution followed by Goat anti-rabbit IgG, Cy3 conjugated at 1/200 dilution for 40 minutes at 37°C . Nuclei are stained with DAPI.

Immunohistochemistry (Formalin/PFA-fixed paraffin-embedded sections) - Anti-ERK1 (phospho T202 + Y204) + ERK2 (phospho T185 + Y187) antibody (ab214362)

Please note: All products are "FOR RESEARCH USE ONLY. NOT FOR USE IN DIAGNOSTIC PROCEDURES"

Our Abpromise to you: Quality guaranteed and expert technical support

- Replacement or refund for products not performing as stated on the datasheet

- Valid for 12 months from date of delivery
- Response to your inquiry within 24 hours

- We provide support in Chinese, English, French, German, Japanese and Spanish
- Extensive multi-media technical resources to help you
- We investigate all quality concerns to ensure our products perform to the highest standards

If the product does not perform as described on this datasheet, we will offer a refund or replacement. For full details of the Abpromise, please visit <https://www.abcam.com/abpromise> or contact our technical team.

Terms and conditions

- Guarantee only valid for products bought direct from Abcam or one of our authorized distributors