


### Anti-ERLIN1 antibody ab229261

4 Images

#### Overview

<b>Product name</b>	Anti-ERLIN1 antibody
<b>Description</b>	Rabbit polyclonal to ERLIN1
<b>Host species</b>	Rabbit
<b>Tested applications</b>	<b>Suitable for:</b> WB, IHC-P
<b>Species reactivity</b>	<b>Reacts with:</b> Mouse, Rat, Human <b>Predicted to work with:</b> Cow, Pig, Rhesus monkey 
<b>Immunogen</b>	Recombinant fragment within Human ERLIN1 (internal sequence). The exact sequence is proprietary. Database link: <a href="#">O75477</a>
<b>Positive control</b>	IHC-P: Human hepatoma tissue. C2C12 and RT2 xenograft. WB: HepG2 whole cell lysate.
<b>General notes</b>	<p>The Life Science industry has been in the grips of a reproducibility crisis for a number of years. Abcam is leading the way in addressing this with our range of recombinant monoclonal antibodies and knockout edited cell lines for gold-standard validation. Please check that this product meets your needs before purchasing.</p> <p>If you have any questions, special requirements or concerns, please send us an inquiry and/or contact our Support team ahead of purchase. Recommended alternatives for this product can be found below, along with publications, customer reviews and Q&amp;As</p>

#### Properties

<b>Form</b>	Liquid
<b>Storage instructions</b>	Shipped at 4°C. Store at +4°C short term (1-2 weeks). Upon delivery aliquot. Store at -20°C long term. Avoid freeze / thaw cycle.
<b>Storage buffer</b>	pH: 7.00 Preservative: 0.01% Thimerosal (merthiolate) Constituents: 1.21% Tris, 0.75% Glycine, 20% Glycerol (glycerin, glycerine)
<b>Purity</b>	Immunogen affinity purified
<b>Clonality</b>	Polyclonal
<b>Isotype</b>	IgG

## Applications

### The Abpromise guarantee

Our **Abpromise guarantee** covers the use of ab229261 in the following tested applications.

The application notes include recommended starting dilutions; optimal dilutions/concentrations should be determined by the end user.

Application	Abreviews	Notes
WB		1/500 - 1/3000. Predicted molecular weight: 39 kDa.
IHC-P		1/100 - 1/1000.

## Target

### Function

Component of the ERLIN1/ERLIN2 complex which mediates the endoplasmic reticulum-associated degradation (ERAD) of inositol 1,4,5-trisphosphate receptors (IP3Rs).

### Tissue specificity

Expressed in heart, placenta, liver, kidney, pancreas, prostate, testis, ovary and small intestine.

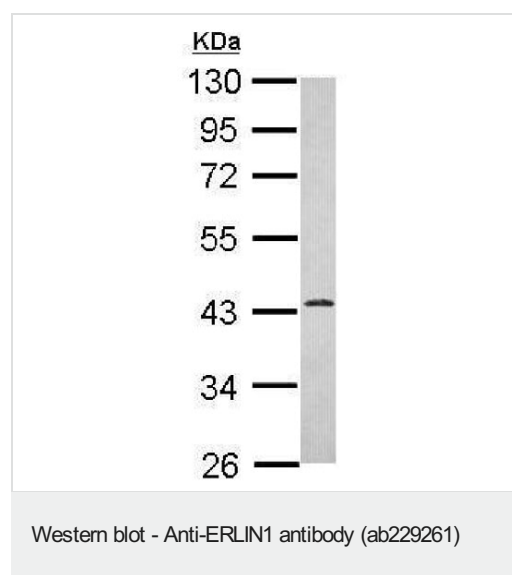
### Sequence similarities

Belongs to the band 7/mec-2 family.

### Cellular localization

Endoplasmic reticulum membrane. Associated with lipid raft-like domains of the endoplasmic reticulum membrane.

## Images

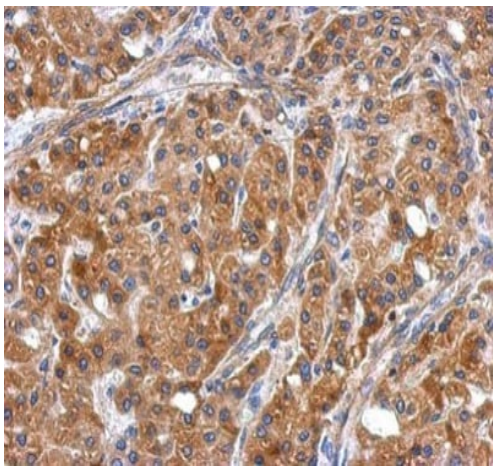


Anti-ERLIN1 antibody (ab229261) at 1/1000 dilution + HepG2  
(Human liver hepatocellular carcinoma cell line) whole cell lysate at  
30 µg

Developed using the ECL technique.

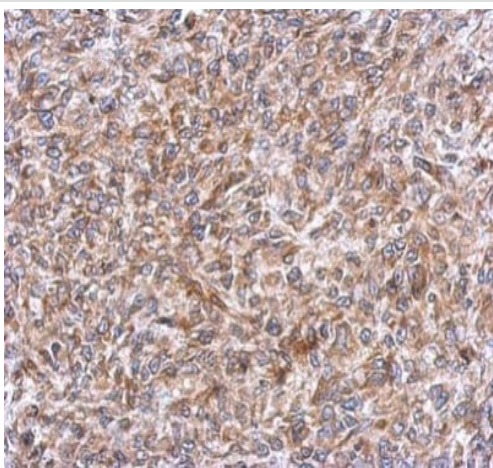
**Predicted band size:** 39 kDa

10% SDS-PAGE



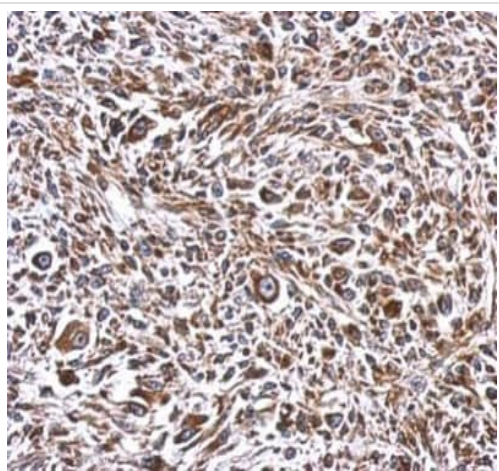
Paraffin-embedded human hepatoma tissue stained for ERLIN1 with ab229261 at 1/500 dilution in immunohistochemical analysis.

Immunohistochemistry (Formalin/PFA-fixed paraffin-embedded sections) - Anti-ERLIN1 antibody (ab229261)



Paraffin-embedded RT2 xenograft stained for ERLIN1 with ab229261 at 1/500 dilution in immunohistochemical analysis.

Immunohistochemistry (Formalin/PFA-fixed paraffin-embedded sections) - Anti-ERLIN1 antibody (ab229261)



Paraffin-embedded C2C12 xenograft stained for ERLIN1 with ab229261 at 1/500 dilution in immunohistochemical analysis.

Immunohistochemistry (Formalin/PFA-fixed paraffin-embedded sections) - Anti-ERLIN1 antibody (ab229261)

**Please note:** All products are "FOR RESEARCH USE ONLY. NOT FOR USE IN DIAGNOSTIC PROCEDURES"

#### **Our Abpromise to you: Quality guaranteed and expert technical support**

---

- Replacement or refund for products not performing as stated on the datasheet
- Valid for 12 months from date of delivery
- Response to your inquiry within 24 hours
- We provide support in Chinese, English, French, German, Japanese and Spanish
- Extensive multi-media technical resources to help you
- We investigate all quality concerns to ensure our products perform to the highest standards

If the product does not perform as described on this datasheet, we will offer a refund or replacement. For full details of the Abpromise, please visit <https://www.abcam.com/abpromise> or contact our technical team.

#### **Terms and conditions**

---

- Guarantee only valid for products bought direct from Abcam or one of our authorized distributors