

Product datasheet

Anti-ERp57 antibody [EPR10678(B)] ab154191

KO VALIDATED

Recombinant

RabMAb

[2 References](#) [9 Images](#)

Overview

Product name	Anti-ERp57 antibody [EPR10678(B)]
Description	Rabbit monoclonal [EPR10678(B)] to ERp57
Host species	Rabbit
Tested applications	Suitable for: WB, IHC-P
Species reactivity	Reacts with: Human
Immunogen	Synthetic peptide. This information is proprietary to Abcam and/or its suppliers.
Positive control	HepG2 cell lysate, 293T cell lysate, HeLa cell lysate, paraffin-embedded Human pancreas tissue
General notes	<p>This product is a recombinant monoclonal antibody, which offers several advantages including:</p> <ul style="list-style-type: none"> - High batch-to-batch consistency and reproducibility - Improved sensitivity and specificity - Long-term security of supply - Animal-free production <p>For more information see here.</p> <p>Our RabMAb[®] technology is a patented hybridoma-based technology for making rabbit monoclonal antibodies. For details on our patents, please refer to RabMAb[®] patents.</p>

Properties

Form	Liquid
Storage instructions	Shipped at 4°C. Store at -20°C. Stable for 12 months at -20°C.
Storage buffer	<p>pH: 7.2</p> <p>Preservative: 0.01% Sodium azide</p> <p>Constituents: 9% PBS, 40% Glycerol (glycerin, glycerine), 0.05% BSA, 50% Tissue culture supernatant</p>
Purity	Protein A purified
Clonality	Monoclonal
Clone number	EPR10678(B)
Isotype	IgG

Applications

The Abpromise guarantee

Our **Abpromise guarantee** covers the use of ab154191 in the following tested applications.

The application notes include recommended starting dilutions; optimal dilutions/concentrations should be determined by the end user.

Application	Abreviews	Notes
WB		1/1000 - 1/10000. Predicted molecular weight: 57 kDa.
IHC-P		1/50 - 1/100. Perform heat mediated antigen retrieval before commencing with IHC staining protocol.

Target

Tissue specificity

Detected in the flagellum and head region of spermatozoa (at protein level).

Sequence similarities

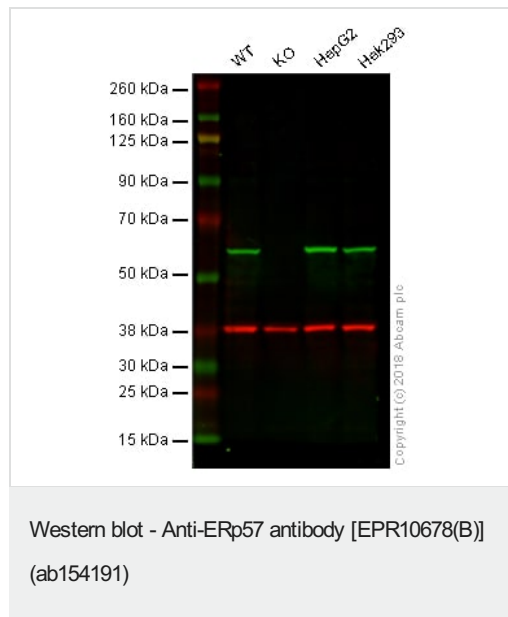
Belongs to the protein disulfide isomerase family.

Contains 2 thioredoxin domains.

Cellular localization

Endoplasmic reticulum lumen. Melanosome. Identified by mass spectrometry in melanosome fractions from stage I to stage IV.

Images



Lane 1: Wild-type HAP1 whole cell lysate (20 µg)

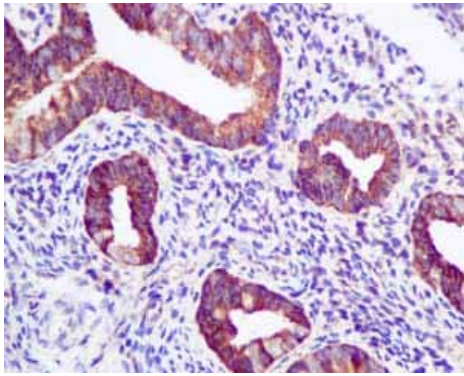
Lane 2: ERp57 knockout HAP1 whole cell lysate (20 µg)

Lane 3: HepG2 whole cell lysate (20 µg)

Lane 4: Hek293 whole cell lysate (20 µg)

Lanes 1 - 4: Merged signal (red and green). Green - ab154191 observed at 57 kDa. Red - loading control, **ab9484**, observed at 37 kDa.

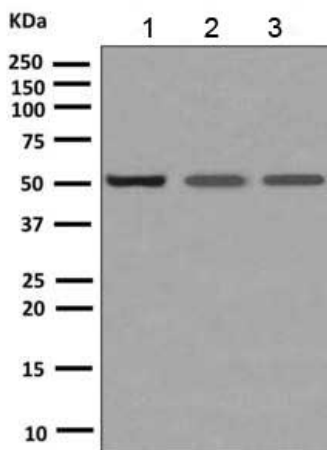
ab154191 was shown to specifically react with ERp57 in wild-type HAP1 cells as signal was lost in ERp57 knockout cells. Wild-type and ERp57 knockout samples were subjected to SDS-PAGE. ab154191 and **ab9484** (Mouse anti-GAPDH loading control) were incubated overnight at 4°C at 1/1000 dilution and 1/20000 dilution respectively. Blots were developed with Goat anti-Rabbit IgG H&L (IRDye® 800CW) preabsorbed **ab216773** and Goat anti-Mouse IgG H&L (IRDye® 680RD) preabsorbed **ab216776** secondary antibodies at 1/20000 dilution for 1 hour at room temperature before imaging.



Immunohistochemistry (Formalin/PFA-fixed paraffin-embedded sections) - Anti-ERp57 antibody [EPR10678(B)] (ab154191)

Immunohistochemical analysis of paraffin embedded Human normal uterus tissue using ab154191 showing +ve staining.

Perform heat mediated antigen retrieval before commencing with IHC staining protocol.



Western blot - Anti-ERp57 antibody [EPR10678(B)] (ab154191)

All lanes : Anti-ERp57 antibody [EPR10678(B)] (ab154191) at 1/1000 dilution

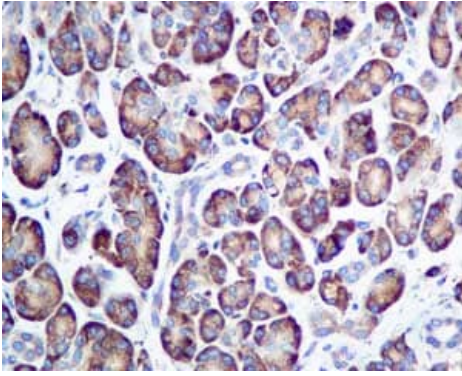
Lane 1 : HepG2 cell lysate

Lane 2 : 293T cell lysate

Lane 3 : HeLa cell lysate

Lysates/proteins at 10 µg per lane.

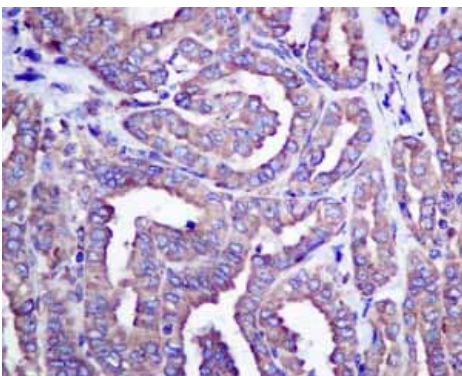
Predicted band size: 57 kDa



Immunohistochemistry (Formalin/PFA-fixed paraffin-embedded sections) - Anti-ERp57 antibody [EPR10678(B)] (ab154191)

Immunohistochemical analysis of paraffin-embedded human pancreas tissue labeling ERp57 with ab154191 at 1/50 dilution.

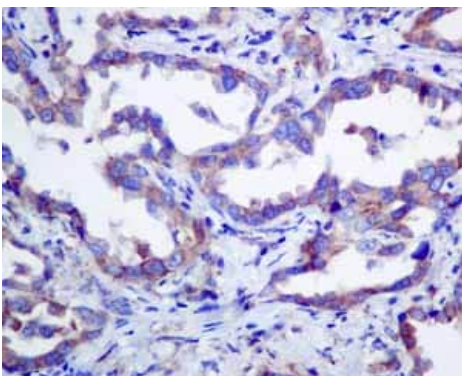
Perform heat mediated antigen retrieval before commencing with IHC staining protocol.



Immunohistochemistry (Formalin/PFA-fixed paraffin-embedded sections) - Anti-ERp57 antibody [EPR10678(B)] (ab154191)

Immunohistochemical analysis of paraffin embedded Human thyroid gland carcinoma tissue using ab154191 showing +ve staining.

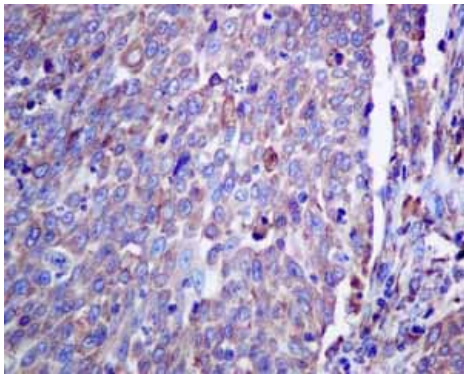
Perform heat mediated antigen retrieval before commencing with IHC staining protocol.



Immunohistochemistry (Formalin/PFA-fixed paraffin-embedded sections) - Anti-ERp57 antibody [EPR10678(B)] (ab154191)

Immunohistochemical analysis of paraffin embedded Human lung carcinoma tissue using ab154191 showing +ve staining.

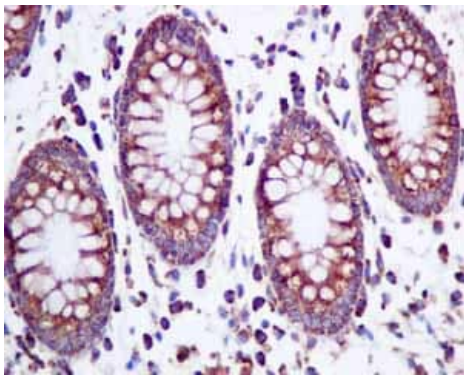
Perform heat mediated antigen retrieval before commencing with IHC staining protocol.



Immunohistochemical analysis of paraffin embedded Human cervical carcinoma tissue using ab154191 showing +ve staining.

Perform heat mediated antigen retrieval before commencing with IHC staining protocol.

Immunohistochemistry (Formalin/PFA-fixed paraffin-embedded sections) - Anti-ERp57 antibody [EPR10678(B)] (ab154191)



Immunohistochemical analysis of paraffin embedded Human normal colon tissue using ab154191 showing +ve staining.

Perform heat mediated antigen retrieval before commencing with IHC staining protocol.

Immunohistochemistry (Formalin/PFA-fixed paraffin-embedded sections) - Anti-ERp57 antibody [EPR10678(B)] (ab154191)

Why choose a recombinant antibody?



Research with confidence
Consistent and reproducible results



Long-term and scalable supply
Recombinant technology



Success from the first experiment
Confirmed specificity



Ethical standards compliant
Animal-free production

Anti-ERp57 antibody [EPR10678(B)] (ab154191)

Please note: All products are "FOR RESEARCH USE ONLY. NOT FOR USE IN DIAGNOSTIC PROCEDURES"

Our Abpromise to you: Quality guaranteed and expert technical support

- Replacement or refund for products not performing as stated on the datasheet
- Valid for 12 months from date of delivery
- Response to your inquiry within 24 hours

- We provide support in Chinese, English, French, German, Japanese and Spanish
- Extensive multi-media technical resources to help you
- We investigate all quality concerns to ensure our products perform to the highest standards

If the product does not perform as described on this datasheet, we will offer a refund or replacement. For full details of the Abpromise, please visit <https://www.abcam.com/abpromise> or contact our technical team.

Terms and conditions

- Guarantee only valid for products bought direct from Abcam or one of our authorized distributors