

Product datasheet

Anti-ESD antibody [EPR8447] ab133631


KO **VALIDATED**

Recombinant

RabMAb

[2 References](#) [3 Images](#)

Overview

Product name	Anti-ESD antibody [EPR8447]
Description	Rabbit monoclonal [EPR8447] to ESD
Host species	Rabbit
Tested applications	Suitable for: WB Unsuitable for: Flow Cyt, ICC/IF or IHC-P
Species reactivity	Reacts with: Human Predicted to work with: Mouse, Rat 
Immunogen	Synthetic peptide within Human ESD aa 250-350 (C terminal). The exact sequence is proprietary.
Positive control	WB: HEK293T, K562, Jurkat, Caco 2 and HeLa cell lysates.
General notes	<p>This product is a recombinant monoclonal antibody, which offers several advantages including:</p> <ul style="list-style-type: none"> - High batch-to-batch consistency and reproducibility - Improved sensitivity and specificity - Long-term security of supply - Animal-free production <p>For more information see here.</p> <p>Our RabMAb[®] technology is a patented hybridoma-based technology for making rabbit monoclonal antibodies. For details on our patents, please refer to RabMAb[®] patents.</p>

Properties

Form	Liquid
Storage instructions	Shipped at 4°C. Store at -20°C. Stable for 12 months at -20°C.
Storage buffer	pH: 7.20 Preservative: 0.01% Sodium azide Constituents: 9% PBS, 40% Glycerol (glycerin, glycerine), 0.05% BSA, 50% Tissue culture supernatant
Purity	Tissue culture supernatant
Clonality	Monoclonal
Clone number	EPR8447

Isotype

IgG

Applications

The Abpromise guarantee

Our **Abpromise guarantee** covers the use of ab133631 in the following tested applications.

The application notes include recommended starting dilutions; optimal dilutions/concentrations should be determined by the end user.

Application	Abreviews	Notes
WB		1/10000 - 1/50000. Detects a band of approximately 31 kDa (predicted molecular weight: 31 kDa).

Application notes

Is unsuitable for Flow Cyt, ICC/IF or IHC-P.

Target

Function

Serine hydrolase involved in the detoxification of formaldehyde.

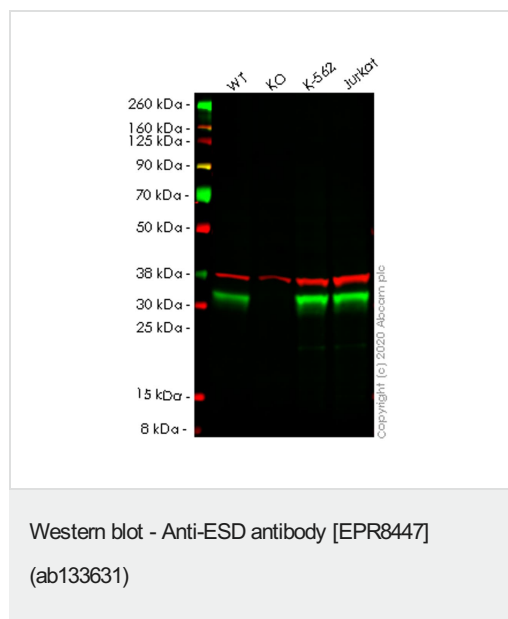
Sequence similarities

Belongs to the esterase D family.

Cellular localization

Cytoplasm. Cytoplasmic vesicle.

Images



All lanes : Anti-ESD antibody [EPR8447] (ab133631) at 1/1000 dilution

Lane 1 : Wild-type HEK-293T (Human epithelial cell line from embryonic kidney transformed with large T antigen) whole cell lysate

Lane 2 : ESD knockout HEK-293T (Human epithelial cell line from embryonic kidney transformed with large T antigen) whole cell lysate

Lane 3 : K562 (Human chronic myelogenous leukemia lymphoblast cell line) whole cell lysate

Lane 4 : Jurkat (Human T cell leukemia cell line from peripheral blood) whole cell lysate

Lysates/proteins at 20 µg per lane.

Secondary

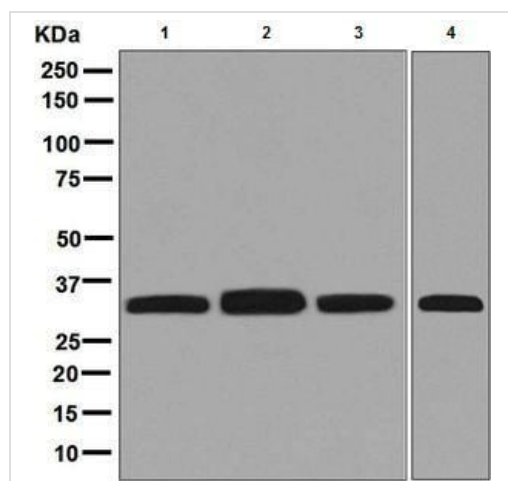
All lanes : Goat anti-Rabbit IgG H&L (IRDye® 800CW) preadsorbed (**ab216773**) at 1/10000 dilution

Predicted band size: 31 kDa

Observed band size: 31 kDa

Lanes 1-4: Merged signal (red and green). Green - ab133631 observed at 31 kDa. Red - loading control **ab8245** observed at 36 kDa.

ab133631 Anti-ESD antibody [EPR8447] was shown to specifically react with ESD in wild-type HEK-293T cells. Loss of signal was observed when knockout cell line **ab266360** (knockout cell lysate **ab257942**) was used. Wild-type and ESD knockout samples were subjected to SDS-PAGE. ab133631 and Anti-GAPDH antibody [6C5] - Loading Control (**ab8245**) were incubated overnight at 4°C at 1 in 1000 dilution and 1 in 20000 dilution respectively. Blots were developed with Goat anti-Rabbit IgG H&L (IRDye® 800CW) preadsorbed (**ab216773**) and Goat anti-Mouse IgG H&L (IRDye® 680RD) preadsorbed (**ab216776**) secondary antibodies at 1 in 20000 dilution for 1 hour at room temperature before imaging.



Western blot - Anti-ESD antibody [EPR8447]
(ab133631)

All lanes : Anti-ESD antibody [EPR8447] (ab133631) at 1/10000 dilution

Lane 1 : K562 cell lysate

Lane 2 : Jurkat cell lysate

Lane 3 : Caco 2 cell lysate

Lane 4 : HeLa cell lysate

Lysates/proteins at 10 µg per lane.





Secondary

All lanes : Goat anti-rabbit HRP conjugated antibody at 1/2000 dilution

Predicted band size: 31 kDa

Observed band size: 31 kDa

Why choose a recombinant antibody?

 <p>Research with confidence Consistent and reproducible results</p>	 <p>Long-term and scalable supply Recombinant technology</p>
 <p>Success from the first experiment Confirmed specificity</p>	 <p>Ethical standards compliant Animal-free production</p>

Anti-ESD antibody [EPR8447] (ab133631)

Please note: All products are "FOR RESEARCH USE ONLY. NOT FOR USE IN DIAGNOSTIC PROCEDURES"

Our Abpromise to you: Quality guaranteed and expert technical support

- Replacement or refund for products not performing as stated on the datasheet
- Valid for 12 months from date of delivery
- Response to your inquiry within 24 hours
- We provide support in Chinese, English, French, German, Japanese and Spanish
- Extensive multi-media technical resources to help you
- We investigate all quality concerns to ensure our products perform to the highest standards

If the product does not perform as described on this datasheet, we will offer a refund or replacement. For full details of the Abpromise, please visit <https://www.abcam.com/abpromise> or contact our technical team.

Terms and conditions

- Guarantee only valid for products bought direct from Abcam or one of our authorized distributors