

Product datasheet

Anti-Estrogen Receptor beta antibody [ERb455] - BSA and Azide free ab212351

[3 References](#) [4 Images](#)

Overview

Product name	Anti-Estrogen Receptor beta antibody [ERb455] - BSA and Azide free
Description	Mouse monoclonal [ERb455] to Estrogen Receptor beta - BSA and Azide free
Host species	Mouse
Tested applications	Suitable for: IHC-P
Species reactivity	Reacts with: Human
Immunogen	Recombinant fragment within Human Estrogen Receptor beta (C terminal). The exact sequence is proprietary. Database link: Q92731
Positive control	MCF-7 Cells. Human ovarian, breast, bladder, gastric or salivary carcinoma.
General notes	<p>The Life Science industry has been in the grips of a reproducibility crisis for a number of years. Abcam is leading the way in addressing this with our range of recombinant monoclonal antibodies and knockout edited cell lines for gold-standard validation. Please check that this product meets your needs before purchasing.</p> <p>If you have any questions, special requirements or concerns, please send us an inquiry and/or contact our Support team ahead of purchase. Recommended alternatives for this product can be found below, along with publications, customer reviews and Q&As</p>

Properties

Form	Liquid
Storage instructions	Shipped at 4°C. Store at +4°C short term (1-2 weeks). Upon delivery aliquot. Store at -20°C. Avoid freeze / thaw cycle.
Storage buffer	pH: 7.2 Constituent: 100% PBS
Carrier free	Yes
Purity	Protein A/G purified
Purification notes	purified from Bioreactor Concentrates
Clonality	Monoclonal
Clone number	ERb455

Isotype

IgG2a

Applications

The Abpromise guarantee

Our **Abpromise guarantee** covers the use of ab212351 in the following tested applications.

The application notes include recommended starting dilutions; optimal dilutions/concentrations should be determined by the end user.

Application	Abreviews	Notes
IHC-P		Use a concentration of 0.5 - 1 µg/ml. Perform heat mediated antigen retrieval with citrate buffer pH 6 before commencing with IHC staining protocol.

Target

Function

Nuclear hormone receptor. Binds estrogens with an affinity similar to that of ESR1, and activates expression of reporter genes containing estrogen response elements (ERE) in an estrogen-dependent manner. Isoform beta-cx lacks ligand binding ability and has no or only very low ere binding activity resulting in the loss of ligand-dependent transactivation ability. DNA-binding by ESR1 and ESR2 is rapidly lost at 37 degrees Celsius in the absence of ligand while in the presence of 17 beta-estradiol and 4-hydroxy-tamoxifen loss in DNA-binding at elevated temperature is more gradual.

Tissue specificity

Isoform beta-1 is expressed in testis and ovary, and at a lower level in heart, brain, placenta, liver, skeletal muscle, spleen, thymus, prostate, colon, bone marrow, mammary gland and uterus. Also found in uterine bone, breast, and ovarian tumor cell lines, but not in colon and liver tumors. Isoform beta-2 is expressed in spleen, thymus, testis and ovary and at a lower level in skeletal muscle, prostate, colon, small intestine, leukocytes, bone marrow, mammary gland and uterus. Isoform beta-3 is found in testis. Isoform beta-4 is expressed in testis, and at a lower level in spleen, thymus, ovary, mammary gland and uterus. Isoform beta-5 is expressed in testis, placenta, skeletal muscle, spleen and leukocytes, and at a lower level in heart, lung, liver, kidney, pancreas, thymus, prostate, colon, small intestine, bone marrow, mammary gland and uterus. Not expressed in brain.

Sequence similarities

Belongs to the nuclear hormone receptor family. NR3 subfamily.
Contains 1 nuclear receptor DNA-binding domain.

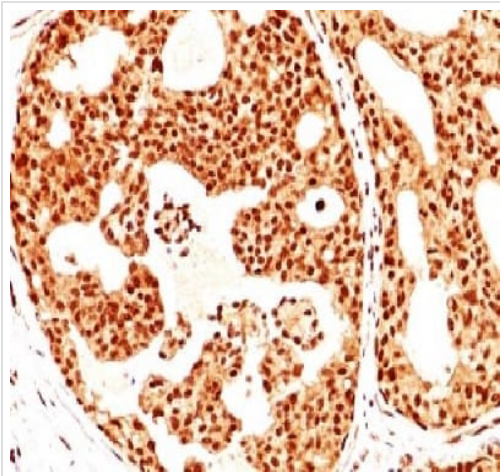
Domain

Composed of three domains: a modulating N-terminal domain, a DNA-binding domain and a C-terminal ligand-binding domain.

Cellular localization

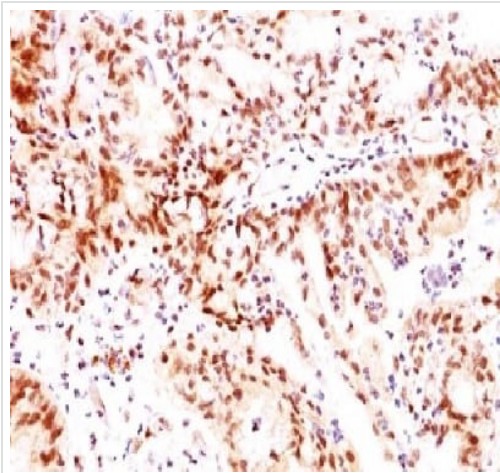
Nucleus.

Images



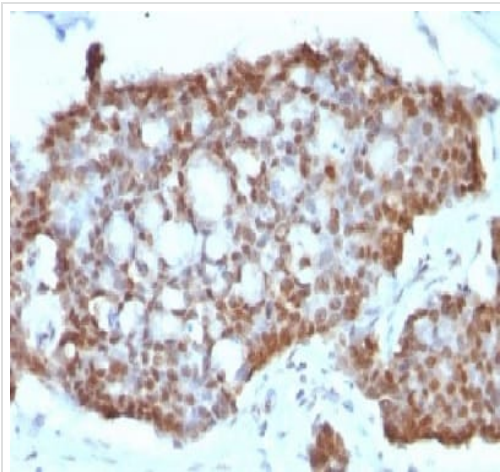
Immunohistochemical analysis of formalin/PFA-fixed paraffin-embedded human breast carcinoma sections labeling Estrogen Receptor beta with ab212351 at 1 µg/ml.

Immunohistochemistry (Formalin/PFA-fixed paraffin-embedded sections) - Anti-Estrogen Receptor beta antibody [ERb455] - BSA and Azide free (ab212351)



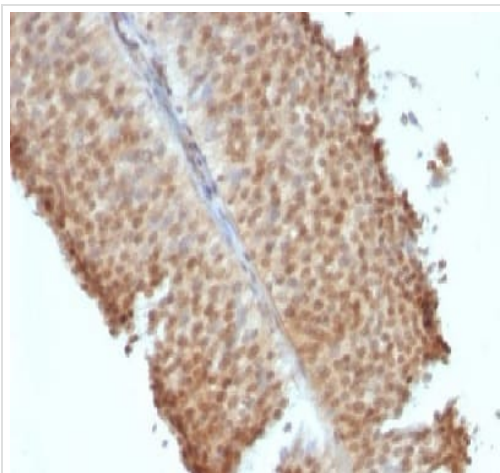
Immunohistochemical analysis of formalin/PFA-fixed paraffin-embedded human ovarian carcinoma sections labelling Estrogen Receptor beta with ab212351 at 1 µg/ml.

Immunohistochemistry (Formalin/PFA-fixed paraffin-embedded sections) - Anti-Estrogen Receptor beta antibody [ERb455] - BSA and Azide free (ab212351)



Immunohistochemical analysis of formalin/PFA-fixed paraffin-embedded human gastric carcinoma sections labelling Estrogen Receptor beta with ab212351 at 1 µg/ml.

Immunohistochemistry (Formalin/PFA-fixed paraffin-embedded sections) - Anti-Estrogen Receptor beta antibody [ERb455] - BSA and Azide free (ab212351)



Immunohistochemical analysis of formalin/PFA-fixed paraffin-embedded human bladder carcinoma sections labelling Estrogen Receptor beta with ab212351 at 1 µg/ml.

Immunohistochemistry (Formalin/PFA-fixed paraffin-embedded sections) - Anti-Estrogen Receptor beta antibody [ERb455] - BSA and Azide free (ab212351)

Please note: All products are "FOR RESEARCH USE ONLY. NOT FOR USE IN DIAGNOSTIC PROCEDURES"

Our Abpromise to you: Quality guaranteed and expert technical support

- Replacement or refund for products not performing as stated on the datasheet

- Valid for 12 months from date of delivery
- Response to your inquiry within 24 hours
- We provide support in Chinese, English, French, German, Japanese and Spanish
- Extensive multi-media technical resources to help you
- We investigate all quality concerns to ensure our products perform to the highest standards

If the product does not perform as described on this datasheet, we will offer a refund or replacement. For full details of the Abpromise, please visit <https://www.abcam.com/abpromise> or contact our technical team.

Terms and conditions

- Guarantee only valid for products bought direct from Abcam or one of our authorized distributors