


Anti-Estrogen Related Receptor alpha antibody ab126098

3 Images

Overview

| | |
|----------------------------|---|
| Product name | Anti-Estrogen Related Receptor alpha antibody |
| Description | Rabbit polyclonal to Estrogen Related Receptor alpha |
| Host species | Rabbit |
| Tested applications | Suitable for: WB, ChIP, IP |
| Species reactivity | Reacts with: Human Predicted to work with: Mouse, Dog, Pig  |
| Immunogen | Recombinant fragment corresponding to Human Estrogen Related Receptor alpha aa 69-319 (internal sequence). Database link: P11474 |
| Positive control | WB: HEK-293T whole cell lysate. IP: HEK-293T whole cell lysate. Chlp: MCF-7 cells. |
| General notes | <p>The Life Science industry has been in the grips of a reproducibility crisis for a number of years. Abcam is leading the way in addressing this with our range of recombinant monoclonal antibodies and knockout edited cell lines for gold-standard validation. Please check that this product meets your needs before purchasing.</p> <p>If you have any questions, special requirements or concerns, please send us an inquiry and/or contact our Support team ahead of purchase. Recommended alternatives for this product can be found below, along with publications, customer reviews and Q&As</p> |

Properties

| | |
|-----------------------------|---|
| Form | Liquid |
| Storage instructions | Shipped at 4°C. Store at +4°C short term (1-2 weeks). Upon delivery aliquot. Store at -20°C or -80°C. Avoid freeze / thaw cycle. |
| Storage buffer | pH: 7.00 Preservative: 0.01% Thimerosal (merthiolate) Constituents: 1.21% Tris, 0.75% Glycine, 20% Glycerol (glycerin, glycerine) |
| Purity | Immunogen affinity purified |
| Clonality | Polyclonal |
| Isotype | IgG |

Applications

The Abpromise guarantee

Our **Abpromise guarantee** covers the use of ab126098 in the following tested applications.

The application notes include recommended starting dilutions; optimal dilutions/concentrations should be determined by the end user.

| Application | Abreviews | Notes |
|-------------|-----------|--|
| WB | | 1/500 - 1/3000. Predicted molecular weight: 46 kDa. |
| ChIP | | Use at an assay dependent concentration. Assay dependent |
| IP | | 1/100 - 1/500. |

Target

Function

Binds to an ERR-alpha response element (ERRE) containing a single consensus half-site, 5'-TNAAGGTCA-3'. Can bind to the medium-chain acyl coenzyme A dehydrogenase (MCAD) response element NRRE-1 and may act as an important regulator of MCAD promoter. Binds to the C1 region of the lactoferrin gene promoter. Requires dimerization and the coactivator, PGC-1A, for full activity. The ERRalpha/PGC1alpha complex is a regulator of energy metabolism.

Sequence similarities

Belongs to the nuclear hormone receptor family. NR3 subfamily.
Contains 1 nuclear receptor DNA-binding domain.

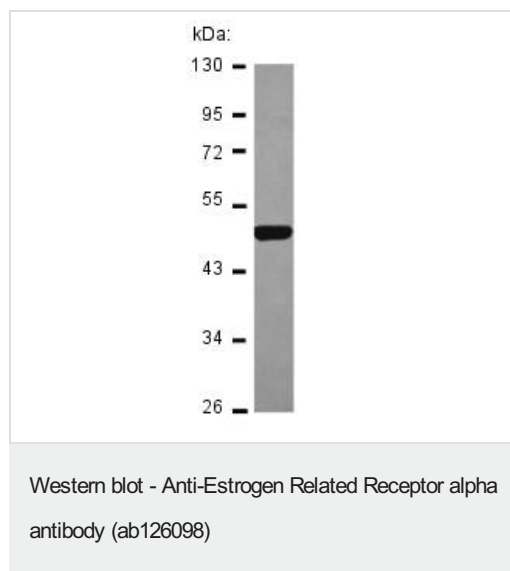
Post-translational modifications

Phosphorylation on Ser-19 enhances sumoylation on Lys-14 increasing repression of transcriptional activity.
Sumoylated by SUMO2. Main site is Lys-14 which is enhanced by phosphorylation on Ser-19, cofactor activation, and by interaction with PIAS4. Sumoylation enhances repression of transcriptional activity, but has no effect on subcellular location nor on DNA binding.

Cellular localization

Nucleus.

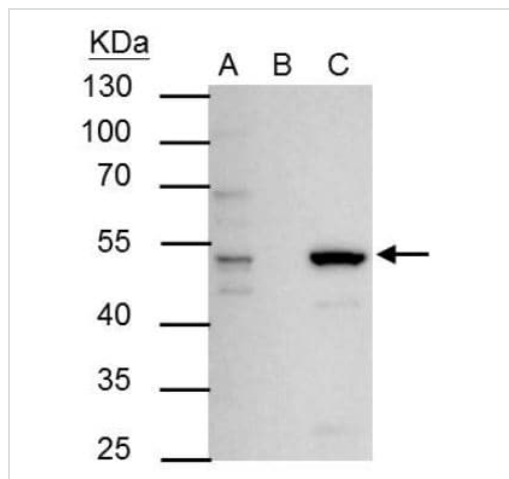
Images



Anti-Estrogen Related Receptor alpha antibody (ab126098) at
1/2000 dilution + HEK-293T whole cell lysate at 30 µg

Predicted band size: 46 kDa

10% SDS Page



Immunoprecipitation - Anti-Estrogen Related Receptor alpha antibody (ab126098)

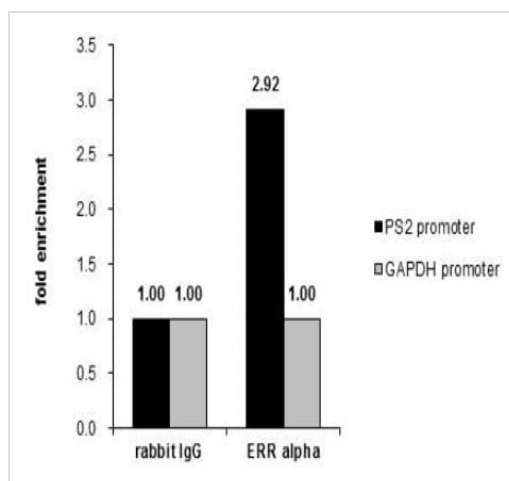
ERR alpha was immunoprecipitated from 30µg of HEK-293T whole cell lysate with ab126098 at 1/1000 dilution. EasyBlot anti-rabbit IgG (HRP) was used as secondary antibody.

Lane 1: HEK-293T cell lysate 30µg (Input).

Lane 2: Control with 2.5 µg of pre-immune rabbit IgG.

Lane 3: Immunoprecipitation of ERR alpha by 2.5 µg of ERR alpha antibody (ab126098).

10% SDS-PAGE



ChIP - Anti-Estrogen Related Receptor alpha antibody (ab126098)

Cross-linked ChIP was performed with MCF-7 chromatin extract and 5 µg of either control rabbit IgG or anti-ERR alpha antibody.

The precipitated DNA was detected by PCR with primer set targeting to PS2 promoter or GAPDH promoter.

Please note: All products are "FOR RESEARCH USE ONLY. NOT FOR USE IN DIAGNOSTIC PROCEDURES"

Our Abpromise to you: Quality guaranteed and expert technical support

- Replacement or refund for products not performing as stated on the datasheet
- Valid for 12 months from date of delivery
- Response to your inquiry within 24 hours
- We provide support in Chinese, English, French, German, Japanese and Spanish
- Extensive multi-media technical resources to help you
- We investigate all quality concerns to ensure our products perform to the highest standards

If the product does not perform as described on this datasheet, we will offer a refund or replacement. For full details of the Abpromise, please visit <https://www.abcam.com/abpromise> or contact our technical team.

Terms and conditions

- Guarantee only valid for products bought direct from Abcam or one of our authorized distributors