

## Product datasheet

# Anti-Estrogen Related Receptor beta antibody ab19331

★★★★★ [7 Abreviews](#) [12 References](#) [1 Image](#)

### Overview

<b>Product name</b>	Anti-Estrogen Related Receptor beta antibody
<b>Description</b>	Rabbit polyclonal to Estrogen Related Receptor beta
<b>Host species</b>	Rabbit
<b>Tested applications</b>	<b>Suitable for:</b> WB <b>Unsuitable for:</b> ICC/IF
<b>Species reactivity</b>	<b>Reacts with:</b> Rat
<b>Immunogen</b>	Synthetic peptide: DYELSQRHEEPRR , corresponding to amino acids 376-388 of Mouse Estrogen Related Receptor beta. <a href="#">Run BLAST with</a> <a href="#">Run BLAST with</a>
<b>General notes</b>	<p>The Life Science industry has been in the grips of a reproducibility crisis for a number of years. Abcam is leading the way in addressing this with our range of recombinant monoclonal antibodies and knockout edited cell lines for gold-standard validation. Please check that this product meets your needs before purchasing.</p> <p>If you have any questions, special requirements or concerns, please send us an inquiry and/or contact our Support team ahead of purchase. Recommended alternatives for this product can be found below, along with publications, customer reviews and Q&amp;As</p>

### Properties

<b>Form</b>	Liquid
<b>Storage instructions</b>	Shipped at 4°C. Upon delivery aliquot and store at -20°C or -80°C. Avoid repeated freeze / thaw cycles.
<b>Storage buffer</b>	Preservative: 0.05% Sodium azide Constituents: PBS, 0.1% BSA
<b>Purity</b>	Immunogen affinity purified
<b>Clonality</b>	Polyclonal
<b>Isotype</b>	IgG

### Applications

## The Abpromise guarantee

Our **Abpromise guarantee** covers the use of ab19331 in the following tested applications.

The application notes include recommended starting dilutions; optimal dilutions/concentrations should be determined by the end user.

Application	Abreviews	Notes
WB		Use a concentration of 2 µg/ml. Detects a band of approximately 48 kDa (predicted molecular weight: 48 kDa).

### Application notes

Is unsuitable for ICC/IF.

## Target

### Function

Nuclear receptor, may regulate ESR1 transcriptional activity.

### Involvement in disease

Defects in ESRRB are the cause of deafness autosomal recessive type 35 (DFNB35) [MIM:608565]. DFNB35 is a form of sensorineural hearing loss. Sensorineural deafness results from damage to the neural receptors of the inner ear, the nerve pathways to the brain, or the area of the brain that receives sound information.

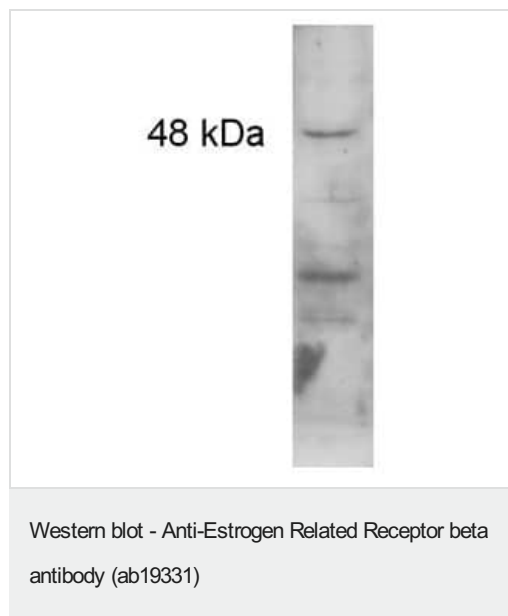
### Sequence similarities

Belongs to the nuclear hormone receptor family. NR3 subfamily.  
Contains 1 nuclear receptor DNA-binding domain.

### Cellular localization

Nucleus.

## Images



Western blot detection of Estrogen Related Receptor beta from 100 µg of rat kidney lysate (1:500).

**Please note:** All products are "FOR RESEARCH USE ONLY. NOT FOR USE IN DIAGNOSTIC PROCEDURES"

## Our Abpromise to you: Quality guaranteed and expert technical support

- Replacement or refund for products not performing as stated on the datasheet
- Valid for 12 months from date of delivery

- Response to your inquiry within 24 hours
- We provide support in Chinese, English, French, German, Japanese and Spanish
- Extensive multi-media technical resources to help you
- We investigate all quality concerns to ensure our products perform to the highest standards

If the product does not perform as described on this datasheet, we will offer a refund or replacement. For full details of the Abpromise, please visit <https://www.abcam.com/abpromise> or contact our technical team.

#### **Terms and conditions**

---

- Guarantee only valid for products bought direct from Abcam or one of our authorized distributors