


## Product datasheet

### Anti-ETHE1 antibody [EPR11697] ab174302

Recombinant RabMAb

[7 References](#) [4 Images](#)

#### Overview

Product name	Anti-ETHE1 antibody [EPR11697]
Description	Rabbit monoclonal [EPR11697] to ETHE1
Host species	Rabbit
Tested applications	<b>Suitable for:</b> WB, IHC-P <b>Unsuitable for:</b> Flow Cyt, ICC/IF or IP
Species reactivity	<b>Reacts with:</b> Human <b>Predicted to work with:</b> Mouse, Rat 
Immunogen	Synthetic peptide. This information is proprietary to Abcam and/or its suppliers.
Positive control	HepG2, HeLa, SW480 and Jurkat cell lysates; Cervical carcinoma and colon tissues
General notes	<p>This product is a recombinant monoclonal antibody, which offers several advantages including:</p> <ul style="list-style-type: none"> <li>- High batch-to-batch consistency and reproducibility</li> <li>- Improved sensitivity and specificity</li> <li>- Long-term security of supply</li> <li>- Animal-free production</li> </ul> <p>For more information <a href="#">see here</a>.</p> <p>Our RabMAb<sup>®</sup> technology is a patented hybridoma-based technology for making rabbit monoclonal antibodies. For details on our patents, please refer to <a href="#">RabMAb<sup>®</sup> patents</a>.</p>

#### Properties

Form	Liquid
Storage instructions	Shipped at 4°C. Store at +4°C short term (1-2 weeks). Upon delivery aliquot. Store at -20°C long term. Avoid freeze / thaw cycle.
Storage buffer	pH: 7.20 Preservative: 0.01% Sodium azide Constituents: 9% PBS, 40% Glycerol (glycerin, glycerine), 0.05% BSA, 50% Tissue culture supernatant
Purity	Tissue culture supernatant
Clonality	Monoclonal

<b>Clone number</b>	EPR11697
<b>Isotype</b>	IgG

## Applications

**The Abpromise guarantee** Our **Abpromise guarantee** covers the use of ab174302 in the following tested applications. The application notes include recommended starting dilutions; optimal dilutions/concentrations should be determined by the end user.

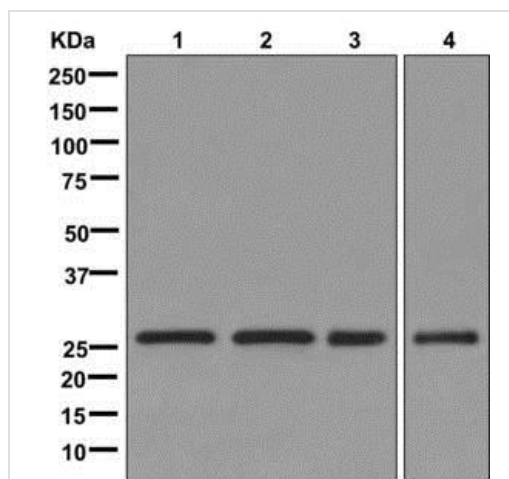
Application	Abreviews	Notes
<b>WB</b>		1/1000 - 1/10000. Predicted molecular weight: 28 kDa.
<b>IHC-P</b>		1/100 - 1/250. Perform heat mediated antigen retrieval with citrate buffer pH 6 before commencing with IHC staining protocol.

**Application notes** Is unsuitable for Flow Cyt, ICC/IF or IP.

## Target

<b>Function</b>	Probably plays an important role in metabolic homeostasis in mitochondria. May function as a nuclear-cytoplasmic shuttling protein that binds transcription factor RELA/NFkB3 in the nucleus and exports it to the cytoplasm. Suppresses p53-induced apoptosis by preventing nuclear localization of RELA.
<b>Tissue specificity</b>	Ubiquitously expressed.
<b>Involvement in disease</b>	Defects in ETHE1 are a cause of ethylmalonic encephalopathy (EE) [MIM:602473]. EE is an autosomal recessive disorder characterized by neurodevelopmental delay and regression, recurrent petechiae, acrocyanosis, diarrhea, leading to death in the first decade of life. It is also associated with persistent lactic acidemia and ethylmalonic and methylsuccinic aciduria.
<b>Sequence similarities</b>	Belongs to the metallo-beta-lactamase superfamily. Glyoxalase II family.
<b>Cellular localization</b>	Cytoplasm. Nucleus. Mitochondrion matrix. According to PubMed:12398897, it is cytoplasmic and nuclear. According to PubMed:14732903, it is found in the mitochondrial matrix.

## Images



Western blot - Anti-ETHE1 antibody [EPR11697]  
(ab174302)

**All lanes :** Anti-HPS1 antibody [EP8429(2)] (**ab174301**) at 1/1000 dilution

**Lane 1 :** HepG2 cell lysate

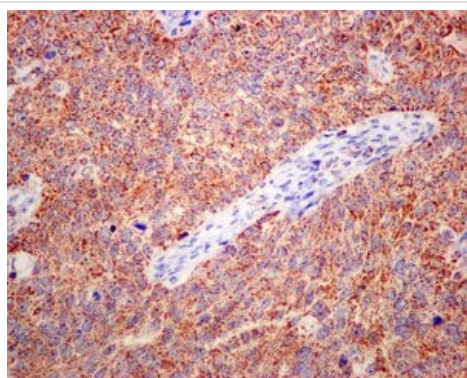
**Lane 2 :** HeLa cell lysate

**Lane 3 :** SW480 cell lysate

**Lane 4 :** Jurkat cell lysate

Lysates/proteins at 10 µg per lane.

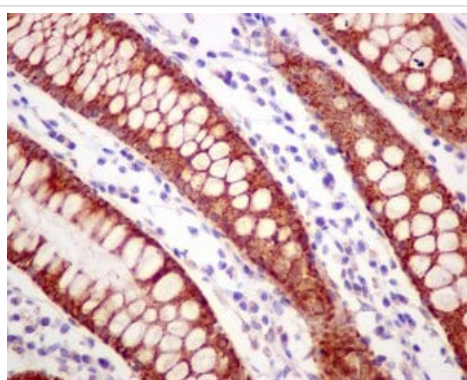
**Predicted band size:** 28 kDa



Immunohistochemistry (Formalin/PFA-fixed paraffin-embedded sections) - Anti-ETHE1 antibody  
[EPR11697] (ab174302)

Immunohistochemical analysis of paraffin-embedded cervical carcinoma tissue labeling ETHE1 with ab174302 at 1/100 dilution.

Perform heat mediated antigen retrieval with citrate buffer pH 6 before commencing with IHC staining protocol.



Immunohistochemistry (Formalin/PFA-fixed paraffin-embedded sections) - Anti-ETHE1 antibody  
[EPR11697] (ab174302)

Immunohistochemical analysis of paraffin-embedded colon tissue labeling ETHE1 with ab174302 at 1/100 dilution.

Perform heat mediated antigen retrieval with citrate buffer pH 6 before commencing with IHC staining protocol.

### Why choose a recombinant antibody?



**Research with confidence**  
Consistent and reproducible results



**Long-term and scalable supply**  
Recombinant technology



**Success from the first experiment**  
Confirmed specificity



**Ethical standards compliant**  
Animal-free production

Anti-ETHE1 antibody [EPR11697] (ab174302)

**Please note:** All products are "FOR RESEARCH USE ONLY. NOT FOR USE IN DIAGNOSTIC PROCEDURES"

### Our Abpromise to you: Quality guaranteed and expert technical support

---

- Replacement or refund for products not performing as stated on the datasheet
- Valid for 12 months from date of delivery
- Response to your inquiry within 24 hours
- We provide support in Chinese, English, French, German, Japanese and Spanish
- Extensive multi-media technical resources to help you
- We investigate all quality concerns to ensure our products perform to the highest standards

If the product does not perform as described on this datasheet, we will offer a refund or replacement. For full details of the Abpromise, please visit <https://www.abcam.com/abpromise> or contact our technical team.

### Terms and conditions

---

- Guarantee only valid for products bought direct from Abcam or one of our authorized distributors