


# Anti-ETS1 antibody ab124282

[6 References](#) [2 Images](#)

## Overview

<b>Product name</b>	Anti-ETS1 antibody
<b>Description</b>	Rabbit polyclonal to ETS1
<b>Host species</b>	Rabbit
<b>Tested applications</b>	<b>Suitable for:</b> WB, IP
<b>Species reactivity</b>	<b>Reacts with:</b> Human <b>Predicted to work with:</b> Mouse, Rat, Rabbit, Goat, Horse, Chicken, Guinea pig, Cow, Dog, Turkey, Pig, Xenopus laevis, Chimpanzee, Rhesus monkey, Gorilla, Orangutan, Xenopus tropicalis, Medaka fish 
<b>Immunogen</b>	Synthetic peptide, corresponding to a region within amino acids 175-225 of Human ETS1 (NP_005229.1).
<b>Positive control</b>	Jurkat whole cell lysate
<b>General notes</b>	<p>The Life Science industry has been in the grips of a reproducibility crisis for a number of years. Abcam is leading the way in addressing this with our range of recombinant monoclonal antibodies and knockout edited cell lines for gold-standard validation. Please check that this product meets your needs before purchasing.</p> <p>If you have any questions, special requirements or concerns, please send us an inquiry and/or contact our Support team ahead of purchase. Recommended alternatives for this product can be found below, along with publications, customer reviews and Q&amp;As</p>

## Properties

<b>Form</b>	Liquid
<b>Storage instructions</b>	Shipped at 4°C. Upon delivery aliquot and store at -20°C. Avoid freeze / thaw cycles.
<b>Storage buffer</b>	<p>pH: 7</p> <p>Preservative: 0.09% Sodium azide</p> <p>Constituent: 99% Tris citrate/phosphate</p> <p>pH 7 to 8</p>
<b>Purity</b>	Immunogen affinity purified
<b>Purification notes</b>	ab124282 was affinity purified using an epitope specific to ETS1 immobilized on solid support .
<b>Clonality</b>	Polyclonal

Isotype

IgG

## Applications

### The Abpromise guarantee

Our **Abpromise guarantee** covers the use of ab124282 in the following tested applications.

The application notes include recommended starting dilutions; optimal dilutions/concentrations should be determined by the end user.

Application	Abreviews	Notes
WB		1/2000 - 1/10000.
IP		Use at 2-10 µg/mg of lysate.

## Target

### Function

Transcription factor.

### Sequence similarities

Belongs to the ETS family.  
Contains 1 ETS DNA-binding domain.  
Contains 1 PNT (pointed) domain.

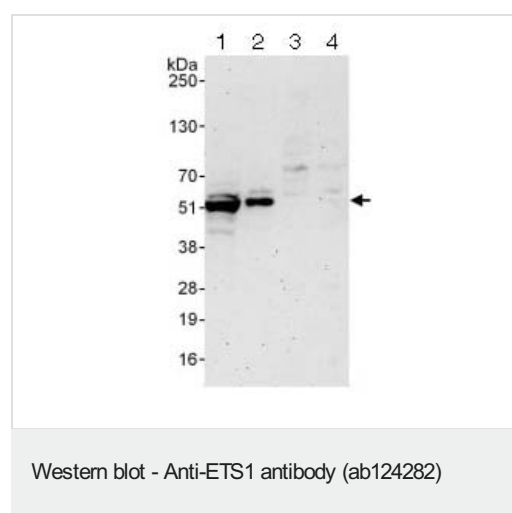
### Post-translational modifications

Sumoylated on Lys-15 and Lys-227, preferentially by SUMO2; which inhibits transcriptional activity.  
Ubiquitinated; which induces proteasomal degradation.

### Cellular localization

Nucleus.

## Images



**All lanes :** Anti-ETS1 antibody (ab124282) at 0.1 µg/ml

**Lane 1 :** Jurkat whole cell lysate at 50 µg

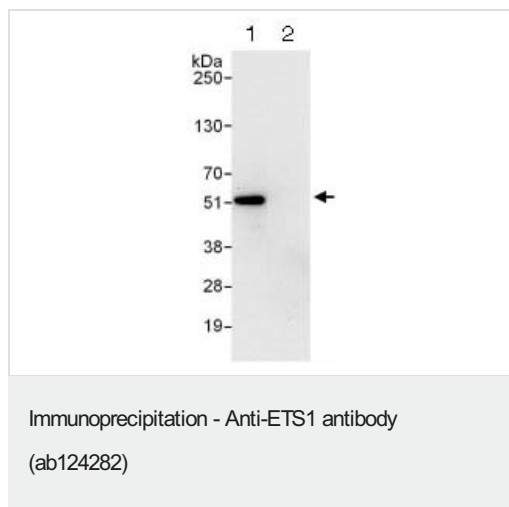
**Lane 2 :** Jurkat whole cell lysate at 15 µg

**Lane 3 :** 293T whole cell lysate at 50 µg

**Lane 4 :** HeLa whole cell lysate at 50 µg

Developed using the ECL technique.

**Exposure time:** 3 minutes



ab124282 at 1 µg/ml staining ETS1 in Jurkat whole cell lysate immunoprecipitated using ab124282 at 6 µg/mg lysate (1 mg/IP; 20% of IP loaded/lane). Lane 2: control IgG.  
Predicted band size : 50 kDa. Exposure time: 30 seconds

**Please note:** All products are "FOR RESEARCH USE ONLY. NOT FOR USE IN DIAGNOSTIC PROCEDURES"

#### Our Abpromise to you: Quality guaranteed and expert technical support

- Replacement or refund for products not performing as stated on the datasheet
- Valid for 12 months from date of delivery
- Response to your inquiry within 24 hours
- We provide support in Chinese, English, French, German, Japanese and Spanish
- Extensive multi-media technical resources to help you
- We investigate all quality concerns to ensure our products perform to the highest standards

If the product does not perform as described on this datasheet, we will offer a refund or replacement. For full details of the Abpromise, please visit <https://www.abcam.com/abpromise> or contact our technical team.

#### Terms and conditions

- Guarantee only valid for products bought direct from Abcam or one of our authorized distributors