

Product datasheet

Anti-ETV6 / Tel antibody ab185816

[4 Images](#)

Overview

Product name	Anti-ETV6 / Tel antibody
Description	Rabbit polyclonal to ETV6 / Tel
Host species	Rabbit
Tested applications	Suitable for: WB, IHC-P
Species reactivity	Reacts with: Human
Immunogen	Recombinant fragment corresponding to Human ETV6/ Tel aa 1-300 (N terminal). Database link: P41212
Positive control	A431 cell line lysate
General notes	<p>The Life Science industry has been in the grips of a reproducibility crisis for a number of years. Abcam is leading the way in addressing this with our range of recombinant monoclonal antibodies and knockout edited cell lines for gold-standard validation. Please check that this product meets your needs before purchasing.</p> <p>If you have any questions, special requirements or concerns, please send us an inquiry and/or contact our Support team ahead of purchase. Recommended alternatives for this product can be found below, along with publications, customer reviews and Q&As</p>

Properties

Form	Liquid
Storage instructions	Shipped at 4°C. Store at +4°C short term (1-2 weeks). Upon delivery aliquot. Store at -20°C long term. Avoid freeze / thaw cycle.
Storage buffer	pH: 7.30 Preservative: 0.02% Sodium azide Constituents: 49% PBS, 50% Glycerol
Purity	Affinity purified
Clonality	Polyclonal
Isotype	IgG

Applications

The Abpromise guarantee

Our **Abpromise guarantee** covers the use of ab185816 in the following tested applications.

The application notes include recommended starting dilutions; optimal dilutions/concentrations should be determined by the end user.

Application	Abreviews	Notes
WB		1/500 - 1/2000. Predicted molecular weight: 53 kDa.
IHC-P		1/50 - 1/200. ab171870 - Rabbit polyclonal IgG, is suitable for use as an isotype control with this antibody.

Target**Function**

Transcriptional repressor; binds to the DNA sequence 5'-CCGGAAGT-3'.

Tissue specificity

Ubiquitous.

Involvement in disease

Note=A chromosomal aberration involving ETV6 is found in a form of chronic myelomonocytic leukemia (CMML). Translocation t(5;12)(q33;p13) with PDGFRB. It is characterized by abnormal clonal myeloid proliferation and by progression to acute myelogenous leukemia (AML).

Note=Chromosomal aberrations involving ETV6 are found in a form of acute myeloid leukemia (AML). Translocation t(12;22)(p13;q11) with MN1; translocation t(4;12)(q12;p13) with CHIC2.

Note=Chromosomal aberrations involving ETV6 are found in childhood acute lymphoblastic leukemia (ALL). Translocations t(12;21)(p12;q22) and t(12;21)(p13;q22) with RUNX1/AML1.

Note=A chromosomal aberration involving ETV6 is found in a form of pre-B acute myeloid leukemia. Translocation t(9;12)(p24;p13) with JAK2.

Note=A chromosomal aberration involving ETV6 is found in myelodysplastic syndrome (MDS) with basophilia. Translocation t(5;12)(q31;p13) with ACSL6.

Note=A chromosomal aberration involving ETV6 is found in acute eosinophilic leukemia (AEL). Translocation t(5;12)(q31;p13) with ACSL6.

Note=A chromosomal aberration involving ETV6 is found in myelodysplastic syndrome (MDS). Translocation t(1;12)(p36.1;p13) with MDS2.

Defects in ETV6 are a cause of myeloproliferative disorder chronic with eosinophilia (MPE) [MIM:131440]. A hematologic disorder characterized by malignant eosinophils proliferation.

Note=A chromosomal aberration involving ETV6 is found in many instances of myeloproliferative disorder chronic with eosinophilia. Translocation t(5;12) with PDGFRB on chromosome 5 creating an ETV6-PDGFRB fusion protein.

Defects in ETV6 are a cause of acute myelogenous leukemia (AML) [MIM:601626]. AML is a malignant disease in which hematopoietic precursors are arrested in an early stage of development.

Note=A chromosomal aberration involving ETV6 is found in acute lymphoblastic leukemia. Translocation t(9;12)(p13;p13) with PAX5.

Sequence similarities

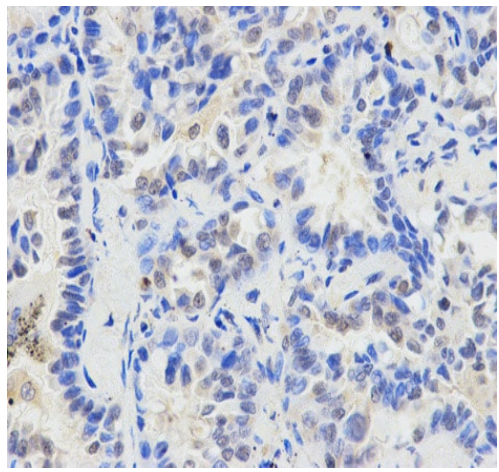
Belongs to the ETS family.
Contains 1 ETS DNA-binding domain.
Contains 1 PNT (pointed) domain.

Post-translational modifications

Phosphorylation of Ser-257 by MAPK14 (p38) inhibits ETV6 transcriptional repression.

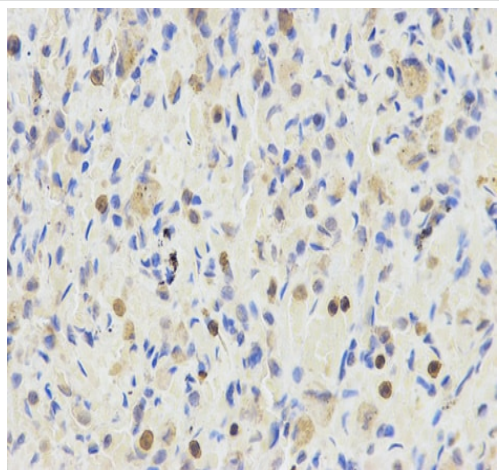
Cellular localization

Nucleus.



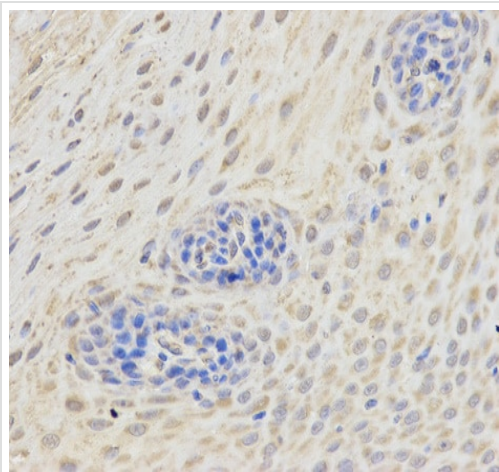
Immunohistochemistry (Formalin/PFA-fixed paraffin-embedded sections) analysis of human lung cancer tissue labelling ETV6 / Tel with ab185816 at 1/200. Magnification: 400x.

Immunohistochemistry (Formalin/PFA-fixed paraffin-embedded sections) - Anti-ETV6 / Tel antibody (ab185816)



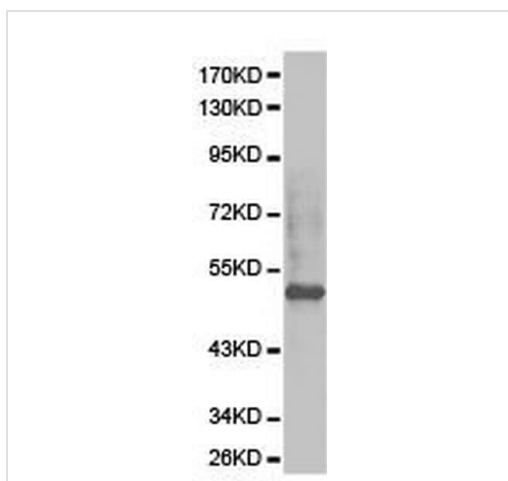
Immunohistochemistry (Formalin/PFA-fixed paraffin-embedded sections) analysis of human lung tissue labelling ETV6 / Tel with ab185816 at 1/200. Magnification: 400x.

Immunohistochemistry (Formalin/PFA-fixed paraffin-embedded sections) - Anti-ETV6 / Tel antibody (ab185816)



Immunohistochemistry (Formalin/PFA-fixed paraffin-embedded sections) analysis of human esophagus tissue labelling ETV6 / Tel with ab185816 at 1/200. Magnification: 400x.

Immunohistochemistry (Formalin/PFA-fixed paraffin-embedded sections) - Anti-ETV6 / Tel antibody (ab185816)



Anti-ETV6 / Tel antibody (ab185816) at 1/500 dilution + A431 cell line extracts

Predicted band size: 53 kDa

Western blot - Anti-ETV6 / Tel antibody (ab185816)

Please note: All products are "FOR RESEARCH USE ONLY. NOT FOR USE IN DIAGNOSTIC PROCEDURES"

Our Abpromise to you: Quality guaranteed and expert technical support

- Replacement or refund for products not performing as stated on the datasheet
- Valid for 12 months from date of delivery
- Response to your inquiry within 24 hours
- We provide support in Chinese, English, French, German, Japanese and Spanish
- Extensive multi-media technical resources to help you
- We investigate all quality concerns to ensure our products perform to the highest standards

If the product does not perform as described on this datasheet, we will offer a refund or replacement. For full details of the Abpromise, please visit <https://www.abcam.com/abpromise> or contact our technical team.

Terms and conditions

- Guarantee only valid for products bought direct from Abcam or one of our authorized distributors