


Product datasheet

Anti-EVC2 antibody ab198930

[1 References](#) [2 Images](#)

Overview

Product name	Anti-EVC2 antibody
Description	Rabbit polyclonal to EVC2
Host species	Rabbit
Tested applications	Suitable for: WB, IHC-P
Species reactivity	Reacts with: Human Predicted to work with: Mouse 
Immunogen	Synthetic peptide corresponding to Human EVC2 (internal sequence). Gene Accession: NP_667338 Database link: Q86UK5
Positive control	Lysate from human placenta tissue; Human colon cancer tissue.
General notes	<p>The Life Science industry has been in the grips of a reproducibility crisis for a number of years. Abcam is leading the way in addressing this with our range of recombinant monoclonal antibodies and knockout edited cell lines for gold-standard validation. Please check that this product meets your needs before purchasing.</p> <p>If you have any questions, special requirements or concerns, please send us an inquiry and/or contact our Support team ahead of purchase. Recommended alternatives for this product can be found below, along with publications, customer reviews and Q&As</p>

Properties

Form	Liquid
Storage instructions	Shipped at 4°C. Store at +4°C short term (1-2 weeks). Upon delivery aliquot. Store at -20°C long term. Avoid freeze / thaw cycle.
Storage buffer	pH: 7.4 Preservative: 0.05% Sodium azide Constituents: 49% PBS, 50% Glycerol (glycerin, glycerine)
Purity	Immunogen affinity purified
Clonality	Polyclonal
Isotype	IgG

Applications

The Abpromise guarantee

Our **Abpromise guarantee** covers the use of ab198930 in the following tested applications.

The application notes include recommended starting dilutions; optimal dilutions/concentrations should be determined by the end user.

Application	Abreviews	Notes
WB		1/200 - 1/1000. Predicted molecular weight: 148 kDa.
IHC-P		1/50 - 1/200. Perform heat mediated antigen retrieval before commencing with IHC staining protocol.

Target

Function

Positive regulator of the hedgehog signaling pathway (By similarity). Plays a critical role in bone formation and skeletal development.

Tissue specificity

Found in the heart, placenta, lung, liver, skeletal muscle, kidney and pancreas.

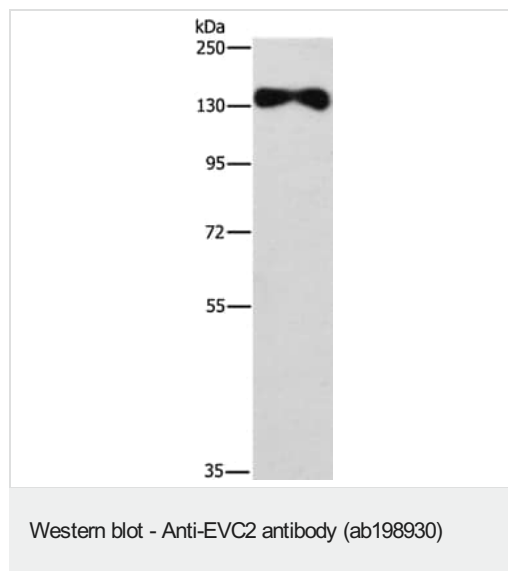
Involvement in disease

Ellis-van Creveld syndrome
Acrofacial dysostosis, Weyers type

Cellular localization

Cell membrane. Cytoplasm, cytoskeleton, cilium basal body. Cell projection, cilium. Cell projection, cilium membrane. Nucleus.

Images

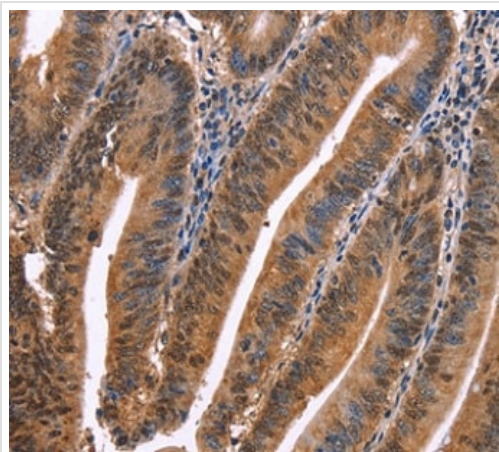


Anti-EVC2 antibody (ab198930) at 1/450 dilution + human placenta tissue lysate at 40 µg

Predicted band size: 148 kDa

Exposure time: 7 minutes

Gel: 6% SDS-PAGE



Immunohistochemical analysis of paraffin-embedded human colon cancer tissue labeling EVC2 with ab198930 at a 1/40 dilution.

Immunohistochemistry (Formalin/PFA-fixed paraffin-embedded sections) - Anti-EVC2 antibody (ab198930)

Please note: All products are "FOR RESEARCH USE ONLY. NOT FOR USE IN DIAGNOSTIC PROCEDURES"

Our Abpromise to you: Quality guaranteed and expert technical support

- Replacement or refund for products not performing as stated on the datasheet
- Valid for 12 months from date of delivery
- Response to your inquiry within 24 hours
- We provide support in Chinese, English, French, German, Japanese and Spanish
- Extensive multi-media technical resources to help you
- We investigate all quality concerns to ensure our products perform to the highest standards

If the product does not perform as described on this datasheet, we will offer a refund or replacement. For full details of the Abpromise, please visit <https://www.abcam.com/abpromise> or contact our technical team.

Terms and conditions

- Guarantee only valid for products bought direct from Abcam or one of our authorized distributors