

## Product datasheet

# Anti-Extracellular matrix protein 1 antibody [EPR6701] ab126629

Recombinant RabMAb

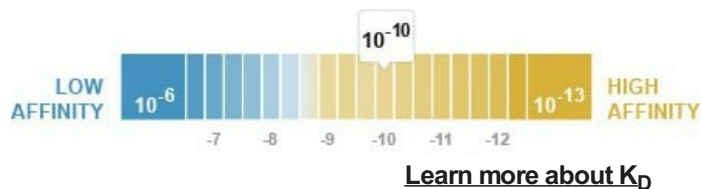
★★★★★ [2 Abreviews](#) [9 References](#) [10 Images](#)

### Overview

<b>Product name</b>	Anti-Extracellular matrix protein 1 antibody [EPR6701]
<b>Description</b>	Rabbit monoclonal [EPR6701] to Extracellular matrix protein 1
<b>Host species</b>	Rabbit
<b>Specificity</b>	The rat recommendation is based on the WB results. We do not guarantee IHC-P for rat.
<b>Tested applications</b>	<b>Suitable for:</b> Flow Cyt (Intra), WB, IP, IHC-P, ICC/IF
<b>Species reactivity</b>	<b>Reacts with:</b> Rat, Human
<b>Immunogen</b>	Synthetic peptide within Human Extracellular matrix protein 1 aa 100-200. The exact sequence is proprietary. Database link: <a href="#">Q16610</a>
<b>Positive control</b>	WB: MDA MB 435 cell line, Rat heart, Rat kidney, Human skin cell, and A375 cell line lysates. IHC-P: Human breast carcinoma and Human kidney tissues. ICC/IF: A375 cells. IP: A375 cells. Flow Cyt (intra): A375 cells.
<b>General notes</b>	This product is a recombinant monoclonal antibody, which offers several advantages including: <ul style="list-style-type: none"> <li>- High batch-to-batch consistency and reproducibility</li> <li>- Improved sensitivity and specificity</li> <li>- Long-term security of supply</li> <li>- Animal-free production</li> </ul> For more information <a href="#">see here</a> .  Our RabMAb <sup>®</sup> technology is a patented hybridoma-based technology for making rabbit monoclonal antibodies. For details on our patents, please refer to <a href="#">RabMAb<sup>®</sup> patents</a> .  Mouse: We have preliminary internal testing data to indicate this antibody may not react with this species. Please contact us for more information.

### Properties

<b>Form</b>	Liquid
<b>Storage instructions</b>	Shipped at 4°C. Store at -20°C. Stable for 12 months at -20°C.
<b>Dissociation constant (K<sub>D</sub>)</b>	K <sub>D</sub> = 1.20 x 10 <sup>-10</sup> M



<b>Storage buffer</b>	pH: 7.20 Preservative: 0.01% Sodium azide Constituents: PBS, 0.05% BSA, 40% Glycerol (glycerin, glycerine)
<b>Purity</b>	Protein A purified
<b>Clonality</b>	Monoclonal
<b>Clone number</b>	EPR6701
<b>Isotype</b>	IgG

## Applications

**The Abpromise guarantee** Our **Abpromise guarantee** covers the use of ab126629 in the following tested applications. The application notes include recommended starting dilutions; optimal dilutions/concentrations should be determined by the end user.

Application	Abreviews	Notes
Flow Cyt (Intra)		1/20.
WB		1/1000 - 1/10000. Predicted molecular weight: 61 kDa.
IP		1/10 - 1/100.
IHC-P	★ ★ ★ ★ ★ (1)	1/100 - 1/250. Perform heat mediated antigen retrieval with citrate buffer pH 6 before commencing with IHC staining protocol. The rat recommendation is based on the WB results. We do not guarantee IHC-P for rat.  See <a href="#">IHC antigen retrieval protocols</a> .
ICC/IF	★ ★ ★ ★ ★ (1)	1/100 - 1/250.

## Target

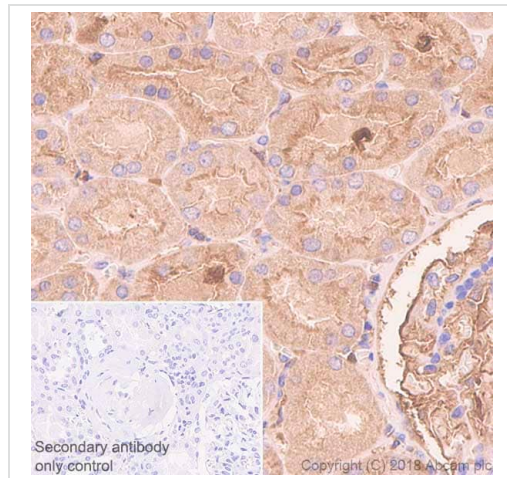
<b>Function</b>	Involved in endochondral bone formation as negative regulator of bone mineralization. Stimulates the proliferation of endothelial cells and promotes angiogenesis. Inhibits MMP9 proteolytic activity.
<b>Tissue specificity</b>	Expressed in breast cancer tissues. Little or no expression observed in normal breast tissues. Expressed in skin; wide expression is observed throughout the dermis with minimal expression in the epidermis.
<b>Involvement in disease</b>	Defects in ECM1 are the cause of lipoid proteinosis (LiP) [MIM:247100]; also known as lipoid proteinosis of Urbach and Wiethe or hyalinosis cutis et mucosae. LiP is a rare autosomal recessive disorder characterized by generalized thickening of skin, mucosae and certain viscera. Classical features include beaded eyelid papules and laryngeal infiltration leading to hoarseness. Histologically, there is widespread deposition of hyaline material and disruption/reduplication of

basement membrane.

## Cellular localization

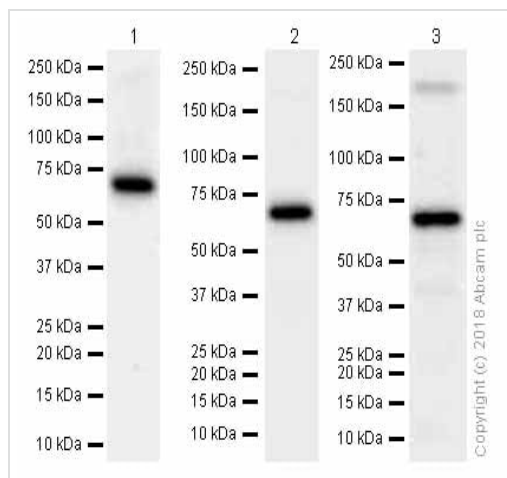
Secreted > extracellular space > extracellular matrix.

## Images



Immunohistochemistry (Formalin/PFA-fixed paraffin-embedded sections) - Anti-Extracellular matrix protein 1 antibody [EPR6701] (ab126629)

Immunohistochemistry (Formalin/PFA-fixed paraffin-embedded sections) analysis of Human kidney tissue sections labeling Extracellular matrix protein 1 with purified ab126629 at 1:100 dilution (2.01 µg/ml). Heat mediated antigen retrieval was performed using **ab93684** (Tris/EDTA buffer, pH 9.0). ImmunoHistoProbe one step HRP Polymer (ready to use) was used as the secondary antibody. Negative control: PBS instead of the primary antibody. Hematoxylin was used as a counterstain.



Western blot - Anti-Extracellular matrix protein 1 antibody [EPR6701] (ab126629)

**All lanes :** Anti-Extracellular matrix protein 1 antibody [EPR6701] (ab126629) at 1/2000 dilution (Purified)

**Lane 1 :** A375 (Human malignant melanoma epithelial cell)

**Lane 2 :** Rat heart lysates

**Lane 3 :** Rat kidney lysates

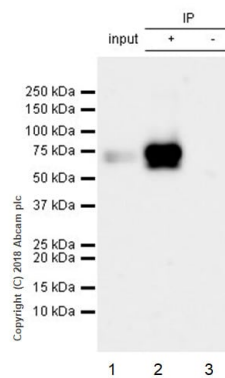
Lysates/proteins at 15 µg per lane.

### Secondary

**All lanes :** Goat Anti-Rabbit IgG H&L (HRP) (**ab97051**) at 1/20000 dilution

**Predicted band size:** 61 kDa

**Observed band size:** 61 kDa



Immunoprecipitation - Anti-Extracellular matrix protein 1 antibody [EPR6701] (ab126629)

ab126629 (purified) at 1:20 dilution (2µg) immunoprecipitating Extracellular matrix protein 1 in A375 whole cell lysate.

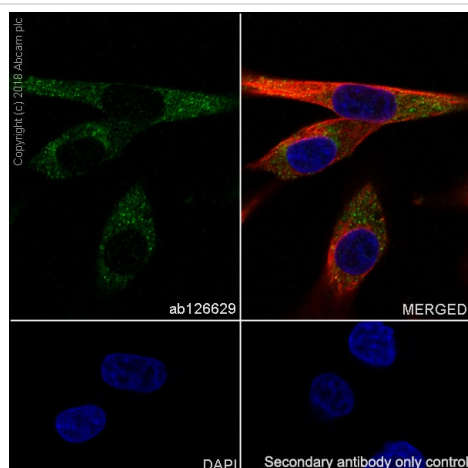
Lane 1 (input): A375 (Human malignant melanoma epithelial cell) whole cell lysate 10µg

Lane 2 (+): ab126629 & A375 whole cell lysate

Lane 3 (-): Rabbit monoclonal IgG (**ab172730**) instead of ab126629 in A375 whole cell lysate

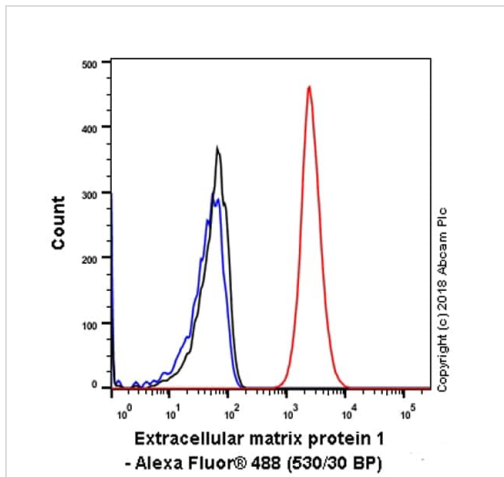
For western blotting, VeriBlot for IP Detection Reagent (HRP) (**ab131366**) was used for detection at 1:1000 dilution.

Blocking and diluting buffer: 5% NFDM/TBST.



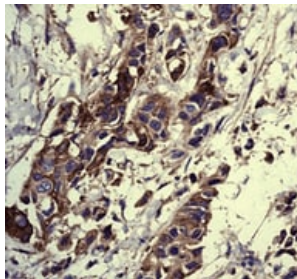
Immunocytochemistry/ Immunofluorescence - Anti-Extracellular matrix protein 1 antibody [EPR6701] (ab126629)

Immunocytochemistry/ Immunofluorescence analysis of A375 (Human malignant melanoma epithelial cell) cells labeling Extracellular matrix protein 1 with purified ab126629 at 1:100 dilution (2.0 µg/ml). Cells were fixed in 4% Paraformaldehyde and permeabilized with 0.1% tritonX-100. Cells were counterstained with Ab195889 Anti-alpha Tubulin antibody [DM1A] - Microtubule Marker (Alexa Fluor® 594) 1:200 (2.5 µg/ml). Goat anti rabbit IgG (Alexa Fluor® 488, **ab150077**) was used as the secondary antibody at 1:1000 (2 µg/ml) dilution. DAPI nuclear counterstain. PBS instead of the primary antibody was used as the secondary antibody only control.



Flow Cytometry (Intracellular) - Anti-Extracellular matrix protein 1 antibody [EPR6701] (ab126629)

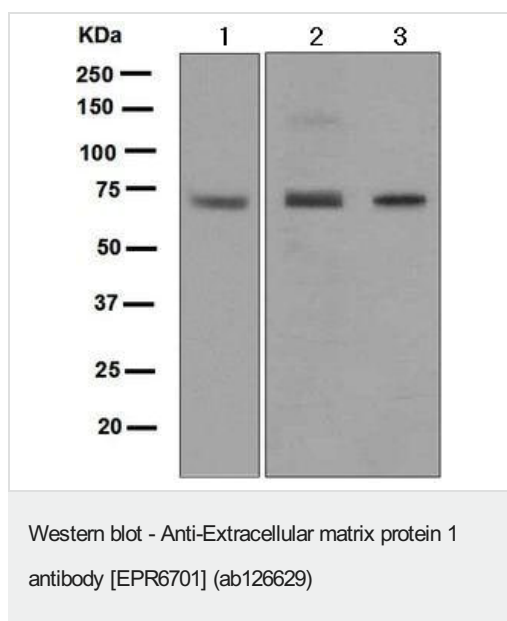
Intracellular Flow Cytometry analysis of A375 (Human malignant melanoma epithelial cell) cells labeling Extracellular matrix protein 1 with purified ab126629 at 1/20 dilution (10 µg/ml) (red). Cells were fixed with 4% Paraformaldehyde. A Goat anti rabbit IgG (Alexa Fluor® 488, [ab150077](#)) secondary antibody was used at 1/2000. Isotype control - Rabbit monoclonal IgG (Black). Unlabeled control - Cell without incubation with primary antibody and secondary antibody (Blue).



Immunohistochemistry (Formalin/PFA-fixed paraffin-embedded sections) - Anti-Extracellular matrix protein 1 antibody [EPR6701] (ab126629)

ab126629, at 1/100, staining Extracellular matrix protein 1 in formalin fixed, paraffin embedded Human breast carcinoma tissue by Immunohistochemistry.

Heat mediated antigen retrieval was performed with citrate buffer pH 6 before commencing with IHC staining protocol.



**All lanes :** Anti-Extracellular matrix protein 1 antibody [EPR6701] (ab126629) at 1/1000 dilution

**Lane 1 :** MDA MB 435 cell line lysate

**Lane 2 :** Human skin cell lysate

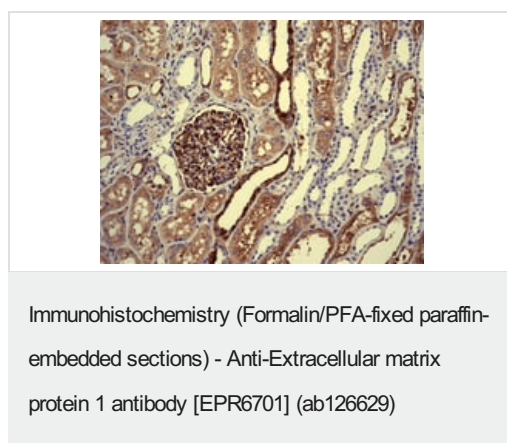
**Lane 3 :** A375 cell line lysate

Lysates/proteins at 10 µg per lane.

#### Secondary

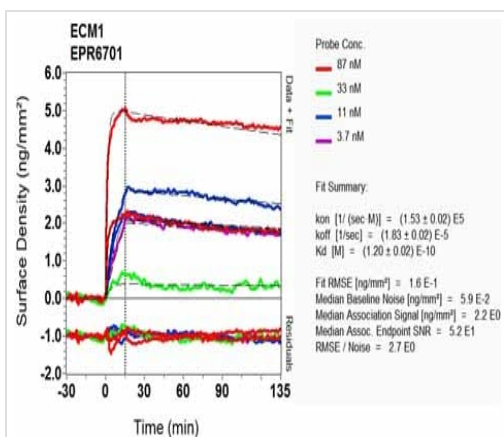
**All lanes :** Goat anti-rabbit HRP conjugated antibody at 1/2000 dilution

**Predicted band size:** 61 kDa



ab126629, at 1/100, staining Extracellular matrix protein 1 in formalin fixed, paraffin embedded Human kidney tissue by Immunohistochemistry.

Heat mediated antigen retrieval was performed with citrate buffer pH 6 before commencing with IHC staining protocol.



OI-RD Scanning - Anti-Extracellular matrix protein 1  
antibody [EPR6701] (ab126629)

Equilibrium dissociation constant ( $K_D$ )

Learn more about  $K_D$

[Click here to learn more about  \$K\_D\$](#)

Why choose a  
recombinant antibody?



**Research with  
confidence**  
Consistent and  
reproducible results



**Long-term and  
scalable supply**  
Recombinant  
technology



**Success from the  
first experiment**  
Confirmed  
specificity



**Ethical standards  
compliant**  
Animal-free  
production

Anti-Extracellular matrix protein 1 antibody  
[EPR6701] (ab126629)

**Please note:** All products are "FOR RESEARCH USE ONLY. NOT FOR USE IN DIAGNOSTIC PROCEDURES"

**Our Abpromise to you: Quality guaranteed and expert technical support**

- Replacement or refund for products not performing as stated on the datasheet
- Valid for 12 months from date of delivery
- Response to your inquiry within 24 hours

- We provide support in Chinese, English, French, German, Japanese and Spanish
- Extensive multi-media technical resources to help you
- We investigate all quality concerns to ensure our products perform to the highest standards

If the product does not perform as described on this datasheet, we will offer a refund or replacement. For full details of the Abpromise, please visit <https://www.abcam.com/abpromise> or contact our technical team.

#### **Terms and conditions**

---

- Guarantee only valid for products bought direct from Abcam or one of our authorized distributors