


### Anti-FAM134C antibody - C-terminal ab202125

★★★★☆ [2 Abreviews](#) [2 Images](#)

#### Overview

<b>Product name</b>	Anti-FAM134C antibody - C-terminal
<b>Description</b>	Rabbit polyclonal to FAM134C - C-terminal
<b>Host species</b>	Rabbit
<b>Tested applications</b>	<b>Suitable for:</b> WB, IP
<b>Species reactivity</b>	<b>Reacts with:</b> Human <b>Predicted to work with:</b> Mouse, Sheep, Horse, Cow, Dog, Pig, Chimpanzee, Rhesus monkey, Orangutan 
<b>Immunogen</b>	Synthetic peptide within Human FAM134C aa 416-466 (C terminal). The exact sequence is proprietary. NP_835227.1 Database link: <a href="#">Q86VR2</a>
<b>Positive control</b>	HeLa, 293T, and Jurkat whole cell lysate ( <a href="#">ab7899</a> ).
<b>General notes</b>	<p>The Life Science industry has been in the grips of a reproducibility crisis for a number of years. Abcam is leading the way in addressing this with our range of recombinant monoclonal antibodies and knockout edited cell lines for gold-standard validation. Please check that this product meets your needs before purchasing.</p> <p>If you have any questions, special requirements or concerns, please send us an inquiry and/or contact our Support team ahead of purchase. Recommended alternatives for this product can be found below, along with publications, customer reviews and Q&amp;As</p>

#### Properties

<b>Form</b>	Liquid
<b>Storage instructions</b>	Shipped at 4°C. Store at +4°C short term (1-2 weeks). Upon delivery aliquot. Store at -20°C long term. Avoid freeze / thaw cycle.
<b>Storage buffer</b>	pH: 7 Preservative: 0.09% Sodium azide Constituent: 99% Tris citrate/phosphate
<b>Purity</b>	pH 7 to 8 Immunogen affinity purified
<b>Clonality</b>	Polyclonal

Isotype IgG

Applications

**The Abpromise guarantee** Our **Abpromise guarantee** covers the use of ab202125 in the following tested applications. The application notes include recommended starting dilutions; optimal dilutions/concentrations should be determined by the end user.

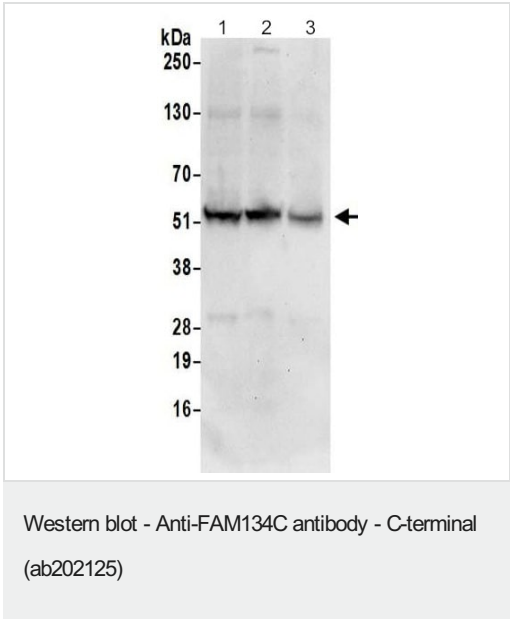
Application	Abreviews	Notes
WB	★★★★★ (1)	1/2000 - 1/10000. Predicted molecular weight: 51 kDa.
IP		Use at 2-10 µg/mg of lysate.

Target

**Sequence similarities** Belongs to the FAM134 family.

**Cellular localization** Membrane.

Images



**All lanes** : Anti-FAM134C antibody - C-terminal (ab202125) at 0.1 µg/ml

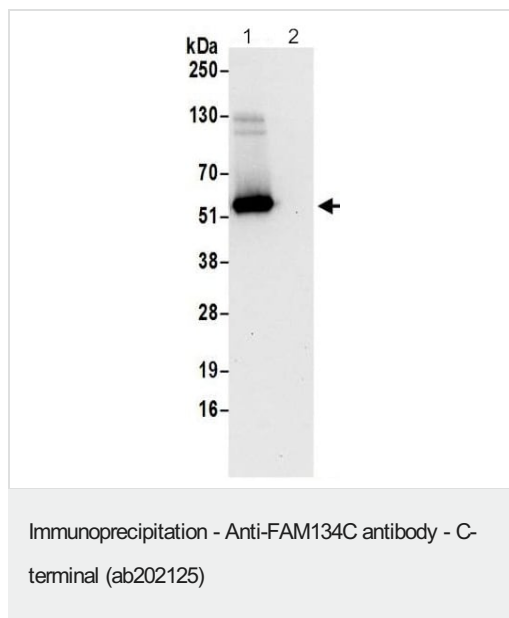
**Lane 1** : HeLa whole cell lysate  
**Lane 2** : 293T whole cell lysate  
**Lane 3** : Jurkat whole cell lysate

Lysates/proteins at 50 µg per lane.

Developed using the ECL technique.

**Predicted band size:** 51 kDa

**Exposure time:** 30 seconds



Lane 1: Detection of FAM134C in immunoprecipitates of 293T whole cell lysate (prepared using NETN lysis buffer; 0.5 or 1.0 mg per IP reaction, 20% of IP loaded) using ab202125 at 6 µg per reaction, and at 1 µg/ml for subsequent Western blot detection.

Lane 2: controle IgG

Detection: Chemiluminescence with an exposure time of 30 seconds.

**Please note:** All products are "FOR RESEARCH USE ONLY. NOT FOR USE IN DIAGNOSTIC PROCEDURES"

### Our Abpromise to you: Quality guaranteed and expert technical support

---

- Replacement or refund for products not performing as stated on the datasheet
- Valid for 12 months from date of delivery
- Response to your inquiry within 24 hours
- We provide support in Chinese, English, French, German, Japanese and Spanish
- Extensive multi-media technical resources to help you
- We investigate all quality concerns to ensure our products perform to the highest standards

If the product does not perform as described on this datasheet, we will offer a refund or replacement. For full details of the Abpromise, please visit <https://www.abcam.com/abpromise> or contact our technical team.

### Terms and conditions

---

- Guarantee only valid for products bought direct from Abcam or one of our authorized distributors