


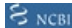


Anti-FAM210A antibody ab151142

3 Images

Overview

Product name	Anti-FAM210A antibody
Description	Rabbit polyclonal to FAM210A
Host species	Rabbit
Tested applications	Suitable for: WB, IHC-P, ICC/IF
Species reactivity	Reacts with: Human
Immunogen	Recombinant fragment, corresponding to N terminal amino acids 2-106 of Human FAM210A (Q96ND0).  Run BLAST with   Run BLAST with 
Positive control	Human hippocampus tissue.
General notes	<p>The Life Science industry has been in the grips of a reproducibility crisis for a number of years. Abcam is leading the way in addressing this with our range of recombinant monoclonal antibodies and knockout edited cell lines for gold-standard validation. Please check that this product meets your needs before purchasing.</p> <p>If you have any questions, special requirements or concerns, please send us an inquiry and/or contact our Support team ahead of purchase. Recommended alternatives for this product can be found below, along with publications, customer reviews and Q&As</p>

Properties

Form	Liquid
Storage instructions	Shipped at 4°C. Upon delivery aliquot and store at -20°C. Avoid repeated freeze / thaw cycles.
Storage buffer	pH: 7.20 Preservative: 0.02% Sodium azide Constituents: 59% PBS, 40% Glycerol (glycerin, glycerine)
Purity	Immunogen affinity purified
Clonality	Polyclonal
Isotype	IgG

Applications

The Abpromise guarantee

Our **Abpromise guarantee** covers the use of ab151142 in the following tested applications.

The application notes include recommended starting dilutions; optimal dilutions/concentrations should be determined by the end user.

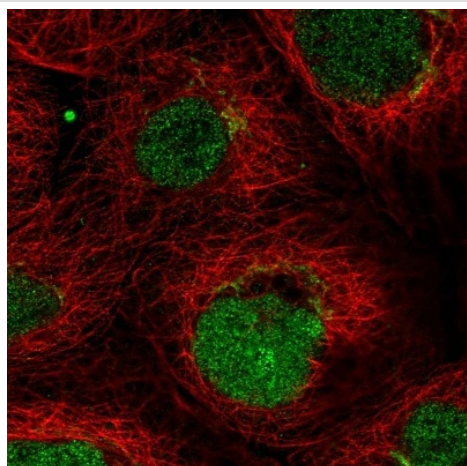
Application	Abreviews	Notes
WB		Use a concentration of 0.04 - 0.4 µg/ml. Predicted molecular weight: 31 kDa.
IHC-P		1/50 - 1/200. Perform heat mediated antigen retrieval with citrate buffer pH 6 before commencing with IHC staining protocol.
ICC/IF		Use a concentration of 0.25 - 2 µg/ml.

Target

Cellular localization

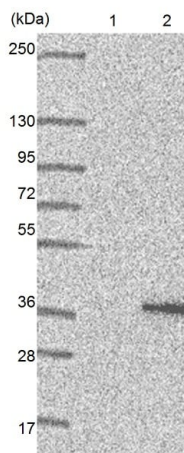
Membrane; Single-pass membrane protein Potential. Mitochondrion Probable.

Images



Immunofluorescent staining of human cell line A-431 shows positivity in the Golgi apparatus & nucleus but excluded from the nucleoli.

Immunocytochemistry/ Immunofluorescence - Anti-FAM210A antibody (ab151142)



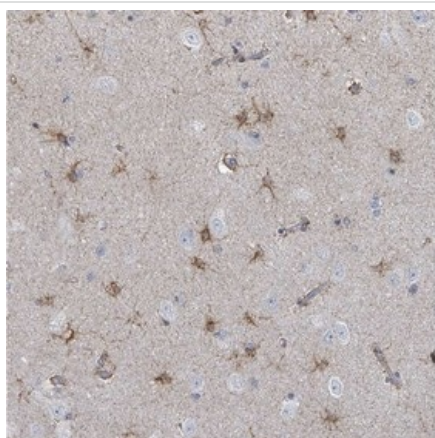
Western blot - Anti-FAM210A antibody (ab151142)

All lanes : Anti-FAM210A antibody (ab151142) at 1/100 dilution

Lane 1 : Negative control (vector only transfected HEK293T lysate)

Lane 2 : Over-expression lysate (co-expressed with a C-terminal myc-DDK tag (~3.1 kDa) in mammalian HEK293T cells

Predicted band size: 31 kDa



Immunohistochemistry (Formalin/PFA-fixed paraffin-embedded sections) - Anti-FAM210A antibody (ab151142)

Immunohistochemical analysis of paraffin-embedded Human hippocampus tissue labeling FAM210A with **ab151366** at 1/50 dilution.

Please note: All products are "FOR RESEARCH USE ONLY. NOT FOR USE IN DIAGNOSTIC PROCEDURES"

Our Abpromise to you: Quality guaranteed and expert technical support

- Replacement or refund for products not performing as stated on the datasheet
- Valid for 12 months from date of delivery
- Response to your inquiry within 24 hours
- We provide support in Chinese, English, French, German, Japanese and Spanish
- Extensive multi-media technical resources to help you
- We investigate all quality concerns to ensure our products perform to the highest standards

If the product does not perform as described on this datasheet, we will offer a refund or replacement. For full details of the Abpromise, please visit <https://www.abcam.com/abpromise> or contact our technical team.

Terms and conditions

- Guarantee only valid for products bought direct from Abcam or one of our authorized distributors