

Product datasheet

Anti-Fas antibody ab82419

★★★★☆ [13 Abreviews](#) [97 References](#) [3 Images](#)

Overview

Product name	Anti-Fas antibody
Description	Rabbit polyclonal to Fas
Host species	Rabbit
Tested applications	Suitable for: WB
Species reactivity	Reacts with: Mouse, Rat
Immunogen	Synthetic peptide corresponding to Mouse Fas conjugated to keyhole limpet haemocyanin. Database link: P25446

General notes

The Life Science industry has been in the grips of a reproducibility crisis for a number of years. Abcam is leading the way in addressing this with our range of recombinant monoclonal antibodies and knockout edited cell lines for gold-standard validation. Please check that this product meets your needs before purchasing.

If you have any questions, special requirements or concerns, please send us an inquiry and/or contact our Support team ahead of purchase. Recommended alternatives for this product can be found below, along with publications, customer reviews and Q&As

Properties

Form	Liquid
Storage instructions	Shipped at 4°C. Store at +4°C short term (1-2 weeks). Upon delivery aliquot. Store at -20°C or -80°C. Avoid freeze / thaw cycle.
Storage buffer	Preservative: 0.09% Sodium azide Constituent: PBS
Purity	Immunogen affinity purified
Clonality	Polyclonal
Isotype	IgG

Applications

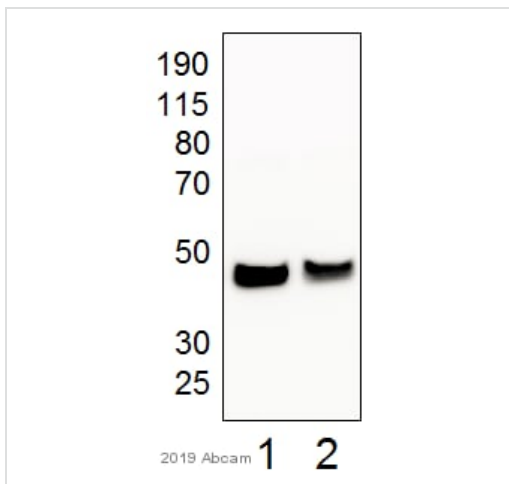
The Abpromise guarantee Our [Abpromise guarantee](#) covers the use of ab82419 in the following tested applications. The application notes include recommended starting dilutions; optimal dilutions/concentrations should be determined by the end user.

Application	Abreviews	Notes
WB	★★★★★ (2)	1/1000. Detects a band of approximately 45 kDa (predicted molecular weight: 45 kDa).

Target

Function	Receptor for TNFSF6/FASLG. The adapter molecule FADD recruits caspase-8 to the activated receptor. The resulting death-inducing signaling complex (DISC) performs caspase-8 proteolytic activation which initiates the subsequent cascade of caspases (aspartate-specific cysteine proteases) mediating apoptosis. FAS-mediated apoptosis may have a role in the induction of peripheral tolerance, in the antigen-stimulated suicide of mature T-cells, or both. The secreted isoforms 2 to 6 block apoptosis (in vitro).
Tissue specificity	Isoform 1 and isoform 6 are expressed at equal levels in resting peripheral blood mononuclear cells. After activation there is an increase in isoform 1 and decrease in the levels of isoform 6.
Involvement in disease	Defects in FAS are the cause of autoimmune lymphoproliferative syndrome type 1A (ALPS1A) [MIM:601859]; also known as Canale-Smith syndrome (CSS). ALPS is a childhood syndrome involving hemolytic anemia and thrombocytopenia with massive lymphadenopathy and splenomegaly.
Sequence similarities	Contains 1 death domain. Contains 3 TNFR-Cys repeats.
Domain	Contains a death domain involved in the binding of FADD, and maybe to other cytosolic adapter proteins.
Cellular localization	Secreted and Cell membrane.

Images



All lanes : Anti-Fas antibody (ab82419) at 1/3000 dilution

Lane 1 : Mouse brain whole tissue lysate
Lane 2 : Mouse retina whole tissue lysate

Lysates/proteins at 30 µg per lane.

Secondary
All lanes : ECL Rabbit IgG, HRP-linked whole Ab from donkey at 1/3000 dilution

Developed using the ECL technique.

Predicted band size: 45 kDa
Observed band size: 45 kDa

Western blot - Anti-Fas antibody (ab82419)
 Image courtesy of an anonymous Abreview

Exposure time: 5 minutes

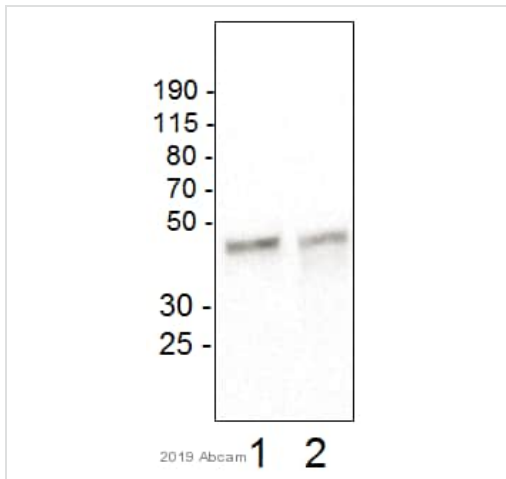
Gel Running conditions:

Reduced Denaturing (4-12% BisTris Gel)

Blocking step:

Milk as blocking agent for 1 hour(s) and 0 minute(s).

Concentration: 5% - Temperature: 22°C



Western blot - Anti-Fas antibody (ab82419)

Image courtesy of an anonymous Abreview.

All lanes : Anti-Fas antibody (ab82419) at 1/1000 dilution

Lane 1 : HeLa whole cell lysate

Lane 2 : HepG2 whole cell lysate

Lysates/proteins at 10 µg per lane.

Secondary

All lanes : ECL Rabbit IgG, HRP-linked whole Ab from donkey at 1/3000 dilution

Developed using the ECL technique.

Predicted band size: 45 kDa

Observed band size: 45 kDa

Exposure time: 5 minutes

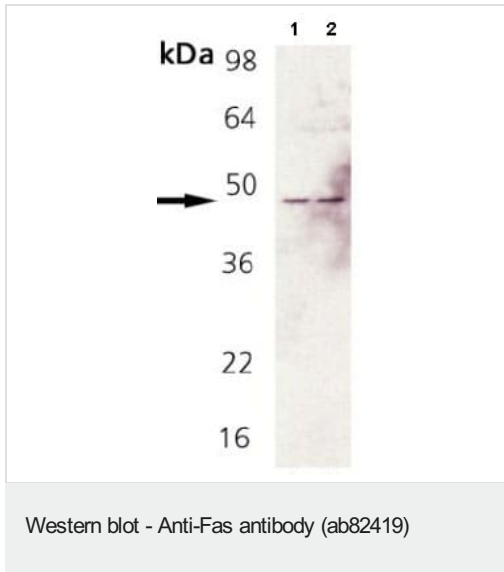
Gel Running Conditions:

Reduced Denaturing (4 -12% BisTris Gel)

Blocking step:

Milk as blocking agent for 1 hour(s) and 0 minute(s). Concentration:

5% - Temperature: 4°C



All lanes : Anti-Fas antibody (ab82419) at 1/1000 dilution

Lane 1 : Rat brain tissue extract

Lane 2 : Mouse brain tissue extract

Developed using the ECL technique.

Predicted band size: 45 kDa

Observed band size: 45 kDa

Please note: All products are "FOR RESEARCH USE ONLY. NOT FOR USE IN DIAGNOSTIC PROCEDURES"

Our Abpromise to you: Quality guaranteed and expert technical support

- Replacement or refund for products not performing as stated on the datasheet
- Valid for 12 months from date of delivery
- Response to your inquiry within 24 hours
- We provide support in Chinese, English, French, German, Japanese and Spanish
- Extensive multi-media technical resources to help you
- We investigate all quality concerns to ensure our products perform to the highest standards

If the product does not perform as described on this datasheet, we will offer a refund or replacement. For full details of the Abpromise, please visit <https://www.abcam.com/abpromise> or contact our technical team.

Terms and conditions

- Guarantee only valid for products bought direct from Abcam or one of our authorized distributors