

Product datasheet

Anti-FAT/FAT1 antibody ab198892

★★★★★ [1 Abreviews](#) [1 References](#) [1 Image](#)

Overview

Product name	Anti-FAT/FAT1 antibody
Description	Rabbit polyclonal to FAT/FAT1
Host species	Rabbit
Tested applications	Suitable for: IHC-P
Species reactivity	Reacts with: Human
Immunogen	Synthetic peptide corresponding to Human FAT/FAT1 (internal sequence). Gene Accession: NP_005236. Database link: Q14517
Positive control	Human thyroid cancer tissue.
General notes	<p>The Life Science industry has been in the grips of a reproducibility crisis for a number of years. Abcam is leading the way in addressing this with our range of recombinant monoclonal antibodies and knockout edited cell lines for gold-standard validation. Please check that this product meets your needs before purchasing.</p> <p>If you have any questions, special requirements or concerns, please send us an inquiry and/or contact our Support team ahead of purchase. Recommended alternatives for this product can be found below, along with publications, customer reviews and Q&As</p>

Properties

Form	Liquid
Storage instructions	Shipped at 4°C. Store at +4°C short term (1-2 weeks). Upon delivery aliquot. Store at -20°C long term. Avoid freeze / thaw cycle.
Storage buffer	pH: 7.4 Preservative: 0.05% Sodium azide Constituents: 49% PBS, 50% Glycerol (glycerin, glycerine)
Purity	Immunogen affinity purified
Clonality	Polyclonal
Isotype	IgG

Applications

The Abpromise guarantee

Our **Abpromise guarantee** covers the use of ab198892 in the following tested applications.

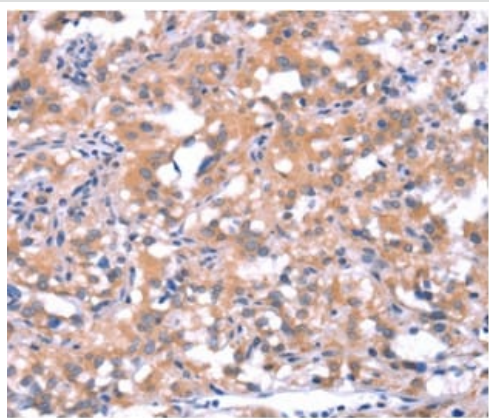
The application notes include recommended starting dilutions; optimal dilutions/concentrations should be determined by the end user.

Application	Abreviews	Notes
IHC-P		1/50 - 1/200.

Target

Function	Plays an essential role for cellular polarization, directed cell migration and modulating cell-cell contact.
Tissue specificity	Expressed in many epithelial and some endothelial and smooth muscle cells.
Sequence similarities	Contains 33 cadherin domains. Contains 5 EGF-like domains. Contains 1 laminin G-like domain.
Domain	A PTB-like motif (DNXYH sequence) is required for the targeting to the leading edge. This motif represents a minimal protein-protein interaction core motif that is not regulated by tyrosine phosphorylation.
Post-translational modifications	Undergoes proteolytic cleavage. The extracellular domain is cleaved off and the cytoplasmic domain (about 400 AA) shuttles to the nucleus.
Cellular localization	Cell membrane. Nucleus. Cytoplasm > perinuclear region.

Images



Immunohistochemical analysis of paraffin-embedded Human thyroid cancer tissue labeling FAT/FAT1 with ab198892 at 1/40 dilution.

Immunohistochemistry (Formalin/PFA-fixed paraffin-embedded sections) - Anti-FAT/FAT1 antibody (ab198892)

Please note: All products are "FOR RESEARCH USE ONLY. NOT FOR USE IN DIAGNOSTIC PROCEDURES"

Our Abpromise to you: Quality guaranteed and expert technical support

- Replacement or refund for products not performing as stated on the datasheet
- Valid for 12 months from date of delivery
- Response to your inquiry within 24 hours

- We provide support in Chinese, English, French, German, Japanese and Spanish
- Extensive multi-media technical resources to help you
- We investigate all quality concerns to ensure our products perform to the highest standards

If the product does not perform as described on this datasheet, we will offer a refund or replacement. For full details of the Abpromise, please visit <https://www.abcam.com/abpromise> or contact our technical team.

Terms and conditions

- Guarantee only valid for products bought direct from Abcam or one of our authorized distributors