


## Product datasheet

# Anti-FBXL2 antibody ab17018

[2 References](#) [2 Images](#)

### Overview

---

<b>Product name</b>	Anti-FBXL2 antibody
<b>Description</b>	Goat polyclonal to FBXL2
<b>Host species</b>	Goat
<b>Tested applications</b>	<b>Suitable for:</b> IHC-P, WB
<b>Species reactivity</b>	<b>Reacts with:</b> Rat, Human <b>Predicted to work with:</b> Cow, Dog 
<b>Immunogen</b>	Synthetic peptide: VFSNNDEGLINKK, corresponding to N terminal amino acids 2-14 of Human FBXL2.

 [Run BLAST with](#)  [Run BLAST with](#) 

### General notes

The Life Science industry has been in the grips of a reproducibility crisis for a number of years. Abcam is leading the way in addressing this with our range of recombinant monoclonal antibodies and knockout edited cell lines for gold-standard validation. Please check that this product meets your needs before purchasing.

If you have any questions, special requirements or concerns, please send us an inquiry and/or contact our Support team ahead of purchase. Recommended alternatives for this product can be found below, along with publications, customer reviews and Q&As

### Properties

---

<b>Form</b>	Liquid
<b>Storage instructions</b>	Shipped at 4°C. Upon delivery aliquot and store at -20°C. Avoid freeze / thaw cycles.
<b>Storage buffer</b>	pH: 7.30 Preservative: 0.02% Sodium azide Constituents: Tris buffered saline, 0.5% BSA
<b>Purity</b>	Immunogen affinity purified
<b>Purification notes</b>	Purified from goat serum by ammonium sulphate precipitation followed by antigen affinity chromatography using the immunizing peptide.
<b>Clonality</b>	Polyclonal
<b>Isotype</b>	IgG

## Applications

### The Abpromise guarantee

Our **Abpromise guarantee** covers the use of ab17018 in the following tested applications.

The application notes include recommended starting dilutions; optimal dilutions/concentrations should be determined by the end user.

Application	Abreviews	Notes
IHC-P		Use a concentration of 5 - 10 µg/ml. Perform heat mediated antigen retrieval with citrate buffer pH 6 before commencing with IHC staining protocol.
WB		Use a concentration of 0.3 - 1 µg/ml. Detects a band of approximately 50-55 kDa (predicted molecular weight: 49 kDa). 1 hour primary incubation is recommended for this product.

## Target

### Function

Calcium-activated substrate recognition component of a SCF (SKP1-cullin-F-box protein) E3 ubiquitin-protein ligase complex which mediates the ubiquitination and subsequent proteasomal degradation of target proteins. Unlike many F-box proteins, FBXL2 doesn't seem to target phosphodegron within its substrates but rather calmodulin-binding motifs. Targets PCYT1A for its monoubiquitination and degradation, this is antagonized by calmodulin (By similarity). Targets the cyclins CCND2 and CCND3 for polyubiquitination and degradation, leading to cell-cycle arrest in G(0), also antagonized by calmodulin. Binds to hepatitis C virus non-structural protein 5A (NS5A) in a reaction crucial for hepatitis C virus RNA replication.

### Tissue specificity

Expressed in brain, heart, kidney, liver, lung, pancreas and placenta.

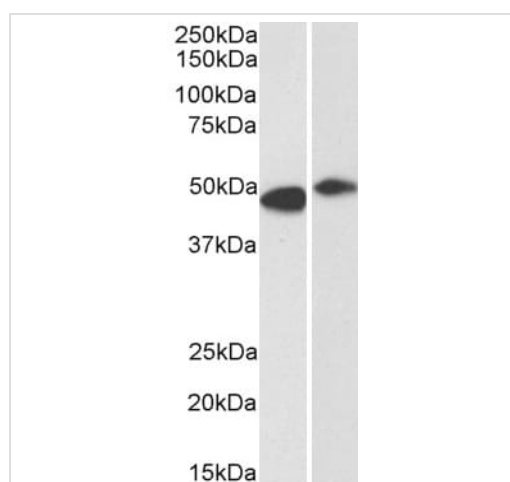
### Sequence similarities

Contains 1 F-box domain.  
Contains 13 LRR (leucine-rich) repeats.

### Cellular localization

Membrane.

## Images



Western blot - Anti-FBXL2 antibody (ab17018)

**All lanes** : Anti-FBXL2 antibody (ab17018) at 0.3 µg/ml

**Lane 1** : Human brain tissue lysate

**Lane 2** : Rat brain tissue lysate

Lysates/proteins at 35 µg per lane.

**Predicted band size:** 49 kDa

Primary incubation was 1 hour. Detected by chemiluminescence.



ab17018 at 0.5µg/ml detecting FBXL2 from Human kidney lysate (35µg total protein per lane). Primary antibody was incubated for 1 hour and the blot was detected using chemiluminescence. ab17018 at 0.5µg/ml detecting FBXL2 from Human kidney lysate (35µg total protein per lane). Primary antibody was incubated for 1 hour and the blot was detected using chemiluminescence.

**Please note:** All products are "FOR RESEARCH USE ONLY. NOT FOR USE IN DIAGNOSTIC PROCEDURES"

### Our Abpromise to you: Quality guaranteed and expert technical support

---

- Replacement or refund for products not performing as stated on the datasheet
- Valid for 12 months from date of delivery
- Response to your inquiry within 24 hours
- We provide support in Chinese, English, French, German, Japanese and Spanish
- Extensive multi-media technical resources to help you
- We investigate all quality concerns to ensure our products perform to the highest standards

If the product does not perform as described on this datasheet, we will offer a refund or replacement. For full details of the Abpromise, please visit <https://www.abcam.com/abpromise> or contact our technical team.

### Terms and conditions

---

- Guarantee only valid for products bought direct from Abcam or one of our authorized distributors