

Anti-FCHSD2 antibody ab122485

3 Images

Overview

Product name	Anti-FCHSD2 antibody
Description	Rabbit polyclonal to FCHSD2
Host species	Rabbit
Tested applications	Suitable for: ICC/IF, WB, IHC-P
Species reactivity	Reacts with: Human
Immunogen	antigen sequence: LNSSKVVRD YNLQLFLQEN AVFHKPQPFQ FQPCDSDTSR QLESETGTTE EHSLNKEARK WATRVAREHK NMVHQQRVLN DLECHGAAVS EQSRA, corresponding to amino acids of Human FCHSD2. Run BLAST with Expasy Run BLAST with NCBI
Positive control	Human pancreas tissue; RT 4, U 251 MG, Human liver and tonsil lysates.
General notes	<p>The Life Science industry has been in the grips of a reproducibility crisis for a number of years. Abcam is leading the way in addressing this with our range of recombinant monoclonal antibodies and knockout edited cell lines for gold-standard validation. Please check that this product meets your needs before purchasing.</p> <p>If you have any questions, special requirements or concerns, please send us an inquiry and/or contact our Support team ahead of purchase. Recommended alternatives for this product can be found below, along with publications, customer reviews and Q&As</p>

Properties

Form	Liquid
Storage instructions	Shipped at 4°C. Upon delivery aliquot and store at -20°C. Avoid freeze / thaw cycles.
Storage buffer	pH: 7.20 Preservative: 0.02% Sodium azide Constituents: 59% PBS, 40% Glycerol (glycerin, glycerine)
Purity	Immunogen affinity purified
Clonality	Polyclonal
Isotype	IgG

Applications

The Abpromise guarantee

Our **Abpromise guarantee** covers the use of ab122485 in the following tested applications.

The application notes include recommended starting dilutions; optimal dilutions/concentrations should be determined by the end user.

Application	Abreviews	Notes
ICC/IF		Use a concentration of 0.25 - 2 µg/ml.
WB		1/250 - 1/500.
IHC-P		1/50 - 1/200. Perform heat mediated antigen retrieval with citrate buffer pH 6 before commencing with IHC staining protocol.

Target

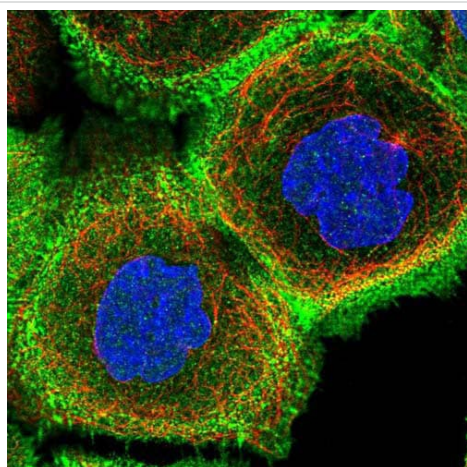
Tissue specificity

Liver, brain, heart, placenta, skeletal muscle, pancreas, lung and kidney.

Sequence similarities

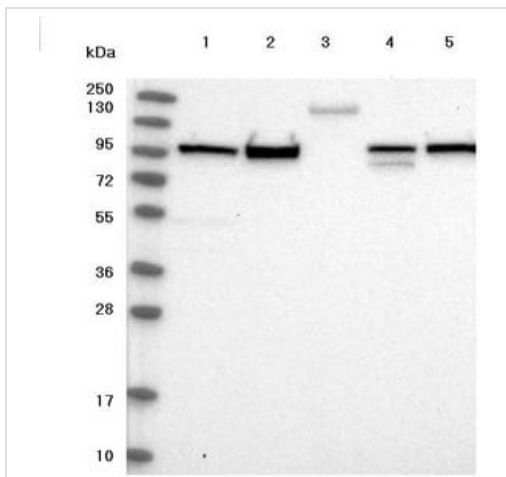
Contains 1 FCH domain.
Contains 2 SH3 domains.

Images



Immunofluorescent staining of Human cell line A-431 shows positivity in nucleus, plasma membrane and cytoskeleton (actin filaments). Recommended concentration of ab122485 1-4 µg/ml. Cells treated with PFA/Triton X-100.

Immunocytochemistry/ Immunofluorescence - Anti-FCHSD2 antibody (ab122485)



Western blot - Anti-FCHSD2 antibody (ab122485)

All lanes : Anti-FCHSD2 antibody (ab122485) at 1/250 dilution

Lane 1 : RT 4 cell line lysate

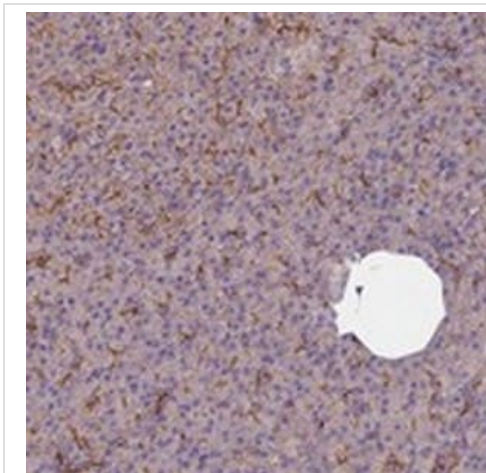
Lane 2 : U 251 MG cell line lysate

Lane 3 : Human plasma lysate

Lane 4 : Human liver tissue lysate

Lane 5 : Human tonsil tissue lysate

Developed using the ECL technique.



Immunohistochemistry (Formalin/PFA-fixed paraffin-embedded sections) - Anti-FCHSD2 antibody (ab122485)

ab122485, at 1/50, staining FCHSD2 in paraffin embedded Human pancreas tissue by Immunohistochemistry.

Please note: All products are "FOR RESEARCH USE ONLY. NOT FOR USE IN DIAGNOSTIC PROCEDURES"

Our Abpromise to you: Quality guaranteed and expert technical support

- Replacement or refund for products not performing as stated on the datasheet
- Valid for 12 months from date of delivery
- Response to your inquiry within 24 hours
- We provide support in Chinese, English, French, German, Japanese and Spanish
- Extensive multi-media technical resources to help you
- We investigate all quality concerns to ensure our products perform to the highest standards

If the product does not perform as described on this datasheet, we will offer a refund or replacement. For full details of the Abpromise, please visit <https://www.abcam.com/abpromise> or contact our technical team.

Terms and conditions

- Guarantee only valid for products bought direct from Abcam or one of our authorized distributors